

ARG66881 anti-TFE3 antibody [SQab21248]

Package: 100 µl
Store at: -20°C

Summary

Product Description	Recombinant Rabbit Monoclonal antibody [SQab21248] recognizes TFE3
Tested Reactivity	Hu
Tested Application	IHC-P, WB
Host	Rabbit
Clonality	Monoclonal
Clone	SQab21248
Isotype	IgG
Target Name	TFE3
Species	Human
Immunogen	Synthetic peptide of Human TFE3.
Conjugation	Un-conjugated
Alternate Names	bHLHe33; TFEA; Class E basic helix-loop-helix protein 33; Transcription factor E3; RCCX1; RCCP2

Application Instructions

Application table	Application	Dilution
	IHC-P	1:100 - 1:200
	WB	1:500 - 1:2000
Application Note	IHC-P: Antigen Retrieval: Heat mediation was performed in Tris/EDTA buffer (pH 9.0). * The dilutions indicate recommended starting dilutions and the optimal dilutions or concentrations should be determined by the scientist.	
Observed Size	70 kDa	

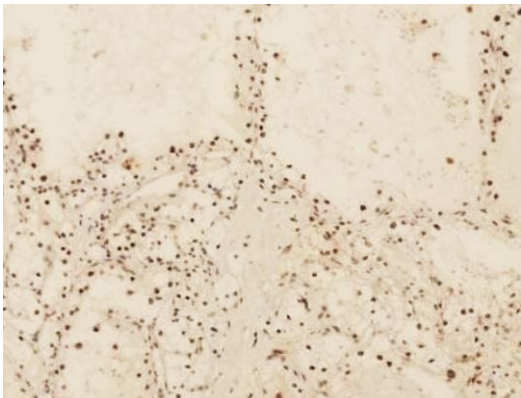
Properties

Form	Liquid
Purification	Purification with Protein A.
Buffer	PBS, 0.01% Sodium azide, 40% Glycerol and 0.05% BSA.
Preservative	0.01% Sodium azide
Stabilizer	40% Glycerol and 0.05% BSA
Storage instruction	For continuous use, store undiluted antibody at 2-8°C for up to a week. For long-term storage, aliquot and store at -20°C. Storage in frost free freezers is not recommended. Avoid repeated freeze/thaw cycles. Suggest spin the vial prior to opening. The antibody solution should be gently mixed before use.
Note	For laboratory research only, not for drug, diagnostic or other use.

Bioinformation

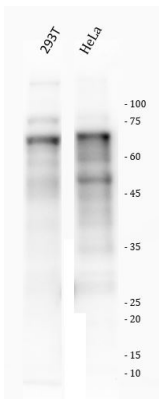
Gene Symbol	TFE3
Gene Full Name	transcription factor binding to IGHM enhancer 3
Function	Transcription factor that specifically recognizes and binds E-box sequences (5'-CANNTG-3') (By similarity). Efficient DNA-binding requires dimerization with itself or with another MiT/TFE family member such as TFEB or MITF (By similarity). In association with TFEB, activates the expression of CD40L in T-cells, thereby playing a role in T-cell-dependent antibody responses in activated CD4(+) T-cells and thymus-dependent humoral immunity (By similarity). Specifically recognizes the MUE3 box, a subset of E-boxes, present in the immunoglobulin enhancer (PubMed:2338243). It also binds very well to a USF/MLTF site (PubMed:2338243). May regulate lysosomal positioning in response to nutrient deprivation by promoting the expression of PIP4P1 (PubMed:29146937). [UniProt]
Calculated Mw	62 kDa
PTM	Sumoylated; does not affect dimerization with MITF. [UniProt]
Cellular Localization	Nucleus. [UniProt]

Images



ARG66881 anti-TFE3 antibody [SQab21248] IHC-P image

Immunohistochemistry: Formalin-fixed and paraffin-embedded Human renal cell carcinoma tissue. Antigen Retrieval: Heat mediation was performed in Tris/EDTA buffer (pH 9.0). The tissue section was stained with ARG66881 anti-TFE3 antibody [SQab21248] for 30 min at RT.



ARG66881 anti-TFE3 antibody [SQab21248] WB image (Customer review)

Western blot: 293T and HeLa stained with ARG66881 anti-TFE3 antibody [SQab21248] at 1:500 dilution.