

## ARG66866 anti-Bcl 2 antibody

Package: 100 µg  
Store at: -20°C

### Summary

Product Description	Mouse Monoclonal antibody recognizes Bcl 2
Tested Reactivity	Hu, Ms, Rat, Chk
Tested Application	ICC/IF, IHC-P, WB
Host	Mouse
Clonality	Monoclonal
Isotype	IgG
Target Name	Bcl 2
Species	Human
Immunogen	Synthetic peptide of Human Bcl 2.
Conjugation	Un-conjugated
Alternate Names	BCL2; BCL2 Apoptosis Regulator; PPP1R50; Bcl-2; Protein Phosphatase 1, Regulatory Subunit 50; Apoptosis Regulator Bcl-2; B-Cell CLL/Lymphoma 2; BCL2, Apoptosis Regulator

### Application Instructions

Application table	Application	Dilution
	ICC/IF	1:50 - 1:200
	IHC-P	1:200
	WB	1:1000 - 1:2000
Application Note	IHC-P: Antigen Retrieval: High-pressure and temperature Citrate buffer (pH 6.0). * The dilutions indicate recommended starting dilutions and the optimal dilutions or concentrations should be determined by the scientist.	
Positive Control	HeLa and MCF7	
Observed Size	~ 26 kDa	

### Properties

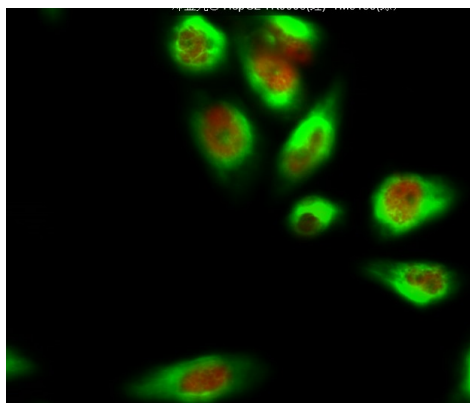
Form	Liquid
Purification	Affinity purification with immunogen.
Buffer	PBS (pH 7.4), 0.02% Sodium azide, 50% Glycerol and 0.5% BSA.
Preservative	0.02% Sodium azide
Stabilizer	50% Glycerol and 0.5% BSA
Storage instruction	For continuous use, store undiluted antibody at 2-8°C for up to a week. For long-term storage, aliquot and store at -20°C. Storage in frost free freezers is not recommended. Avoid repeated freeze/thaw cycles. Suggest spin the vial prior to opening. The antibody solution should be gently mixed before use.

Note For laboratory research only, not for drug, diagnostic or other use.

## Bioinformation

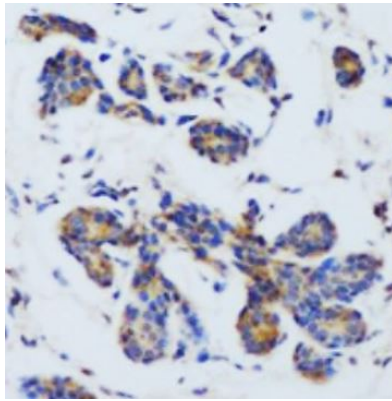
Gene Symbol	BCL2
Gene Full Name	B-cell CLL/lymphoma 2
Background	This gene encodes an integral outer mitochondrial membrane protein that blocks the apoptotic death of some cells such as lymphocytes. Constitutive expression of BCL2, such as in the case of translocation of BCL2 to Ig heavy chain locus, is thought to be the cause of follicular lymphoma. Alternative splicing results in multiple transcript variants. [provided by RefSeq, Feb 2016]
Function	Suppresses apoptosis in a variety of cell systems including factor-dependent lymphohematopoietic and neural cells. [UniProt]
Highlight	Related Antibody Duos and Panels: <a href="#">ARG30268 Apoptosis Marker Antibody Duo (Bcl2, Bax)</a> <a href="#">ARG30269 Apoptosis Marker Antibody Duo (Bcl2, Bid)</a> Related products: <a href="#">Bcl-2 antibodies</a> ; <a href="#">Bcl-2 Duos / Panels</a> ; <a href="#">Anti-Rabbit IgG secondary antibodies</a> ; Related news: <a href="#">Lymphoma</a>
Research Area	Cancer antibody; Cell Biology and Cellular Response antibody; Cell Death antibody; Metabolism antibody; Signaling Transduction antibody; Apoptosis Marker antibody
Calculated Mw	26 kDa
PTM	Phosphoprotein, Ubl conjugation. [UniProt]
Cellular Localization	Cytoplasm, Endoplasmic reticulum, Membrane, Mitochondrion, Mitochondrion outer membrane, Nucleus. [UniProt]

## Images



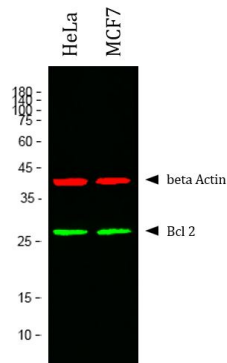
ARG66866 anti-Bcl 2 antibody ICC/IF image

Immunofluorescence: HeLa cells stained with anti-Dnmt3b antibody (red) at 1:200 dilution, overnight at 4°C. Cells were co-stained with ARG66866 anti-Bcl 2 antibody (green) at 1:200 dilution, overnight at 4°C.



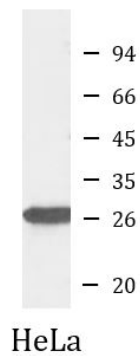
ARG66866 anti-Bcl 2 antibody IHC-P image

Immunohistochemistry: Paraffin-embedded Human breast cancer tissue. Antigen Retrieval: High-pressure and temperature Citrate buffer (pH 6.0). The tissue section was stained with ARG66866 anti-Bcl 2 antibody at 1:200 dilution, overnight at 4°C.



ARG66866 anti-Bcl 2 antibody WB image

Western blot: HeLa and MCF7 cell lysates stained with ARG66866 anti-Bcl 2 antibody (green) at 1:1000 dilution, overnight at 4°C. The blots were co-stained with anti-beta Actin antibody (red) at 1:5000 dilution, overnight at 4°C.



ARG66866 anti-Bcl 2 antibody WB image

Western blot: HeLa cell lysate stained with ARG66866 anti-Bcl 2 antibody at 1:1000 dilution.