

## ARG66824 anti-SDHB antibody [SQab20236]

Package: 50 µl  
Store at: -20°C

### Summary

Product Description	Recombinant Rabbit Monoclonal antibody [SQab20236] recognizes SDHB
Tested Reactivity	Hu
Tested Application	IHC-P
Host	Rabbit
Clonality	Monoclonal
Clone	SQab20236
Isotype	IgG
Target Name	SDHB
Species	Human
Immunogen	Synthetic peptide derived from Human SDHB.
Conjugation	Un-conjugated
Alternate Names	Ip; SDH2; SDH1; IP; EC 1.3.5.1; PGL4; CWS2; Succinate dehydrogenase [ubiquinone] iron-sulfur subunit, mitochondrial; SDHIP; Iron-sulfur subunit of complex II; SDH

### Application Instructions

Application table	<table><thead><tr><th>Application</th><th>Dilution</th></tr></thead><tbody><tr><td>IHC-P</td><td>1:100 - 1:200</td></tr></tbody></table>	Application	Dilution	IHC-P	1:100 - 1:200
Application	Dilution				
IHC-P	1:100 - 1:200				
Application Note	IHC-P: Antigen Retrieval: Heat mediation was performed in Tris/EDTA buffer (pH 9.0), primary antibody incubate at RT (18°C - 25°C) for 30 minutes. * The dilutions indicate recommended starting dilutions and the optimal dilutions or concentrations should be determined by the scientist.				

### Properties

Form	Liquid
Purification	Purification with Protein A.
Buffer	PBS, 0.01% Sodium azide, 40% Glycerol and 0.05% BSA.
Preservative	0.01% Sodium azide
Stabilizer	40% Glycerol and 0.05% BSA
Storage instruction	For continuous use, store undiluted antibody at 2-8°C for up to a week. For long-term storage, aliquot and store at -20°C. Storage in frost free freezers is not recommended. Avoid repeated freeze/thaw cycles. Suggest spin the vial prior to opening. The antibody solution should be gently mixed before use.
Note	For laboratory research only, not for drug, diagnostic or other use.

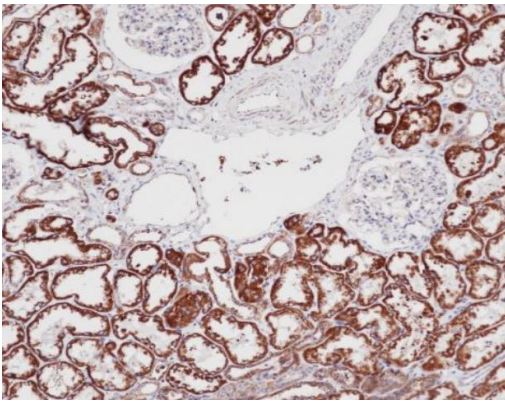
## Bioinformation

---

Gene Symbol	SDHB
Gene Full Name	succinate dehydrogenase complex, subunit B, iron sulfur (Ip)
Background	Complex II of the respiratory chain, which is specifically involved in the oxidation of succinate, carries electrons from FADH to CoQ. The complex is composed of four nuclear-encoded subunits and is localized in the mitochondrial inner membrane. The iron-sulfur subunit is highly conserved and contains three cysteine-rich clusters which may comprise the iron-sulfur centers of the enzyme. Sporadic and familial mutations in this gene result in paragangliomas and pheochromocytoma, and support a link between mitochondrial dysfunction and tumorigenesis. [provided by RefSeq, Jul 2008]
Function	Iron-sulfur protein (IP) subunit of succinate dehydrogenase (SDH) that is involved in complex II of the mitochondrial electron transport chain and is responsible for transferring electrons from succinate to ubiquinone (coenzyme Q). [UniProt]
Calculated Mw	32 kDa
Cellular Localization	Mitochondrion inner membrane; Peripheral membrane protein; Matrix side. [UniProt]

## Images

---



ARG66824 anti-SDHB antibody [SQab20236] IHC-P image

Immunohistochemistry: Formalin/PFA-fixed and paraffin-embedded Human kidney tissue. Antigen Retrieval: Heat mediation was performed in Tris/EDTA buffer (pH 9.0). The tissue section was stained with ARG66824 anti-SDHB antibody [SQab20236].