

ARG66731 anti-HOXC6 antibody

Package: 100 µl
Store at: -20°C

Summary

Product Description	Rabbit Polyclonal antibody recognizes HOXC6
Tested Reactivity	Hu, Ms, Rat
Tested Application	ICC/IF, IHC-P, WB
Host	Rabbit
Clonality	Polyclonal
Isotype	IgG
Target Name	HOXC6
Species	Human
Immunogen	KLH-conjugated synthetic peptide within the C-terminal region of Human HOXC6.
Conjugation	Un-conjugated
Alternate Names	HOX3; Homeobox protein CP25; Homeobox protein HHO.C8; HOX3C; HHO.C8; Homeobox protein Hox-3C; Homeobox protein Hox-C6; CP25

Application Instructions

Application table	Application	Dilution
	ICC/IF	1:100 - 1:500
	IHC-P	1:100 - 1:200
	WB	1:500 - 1:1000
Application Note	IHC-P: Antigen Retrieval: Heat mediation was performed in Sodium citrate buffer (pH 6.0). * The dilutions indicate recommended starting dilutions and the optimal dilutions or concentrations should be determined by the scientist.	
Positive Control	K562, Mouse brain and Rat muscle	
Observed Size	~ 26 kDa	

Properties

Form	Liquid
Purification	Affinity purification with immunogen.
Buffer	0.42% Potassium phosphate (pH 7.3), 0.87% NaCl, 0.01% Sodium azide and 30% Glycerol.
Preservative	0.01% Sodium azide
Stabilizer	30% Glycerol
Storage instruction	For continuous use, store undiluted antibody at 2-8°C for up to a week. For long-term storage, aliquot and store at -20°C. Storage in frost free freezers is not recommended. Avoid repeated freeze/thaw cycles. Suggest spin the vial prior to opening. The antibody solution should be gently mixed before use.

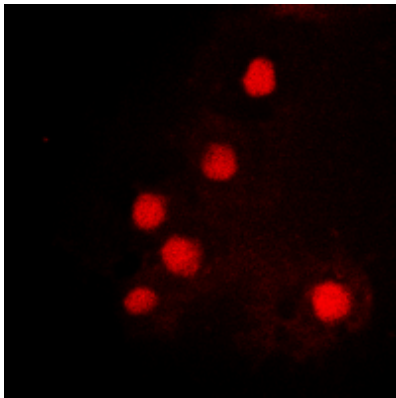
Note

For laboratory research only, not for drug, diagnostic or other use.

Bioinformation

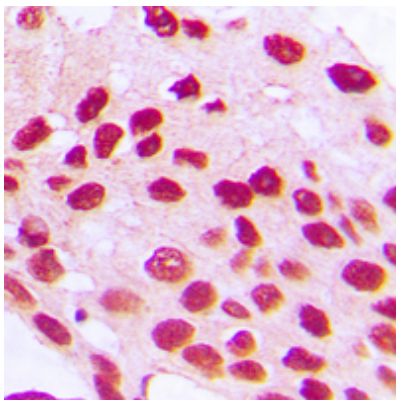
Gene Symbol	HOXC6
Gene Full Name	homeobox C6
Background	This gene belongs to the homeobox family, members of which encode a highly conserved family of transcription factors that play an important role in morphogenesis in all multicellular organisms. Mammals possess four similar homeobox gene clusters, HOXA, HOXB, HOXC and HOXD, which are located on different chromosomes and consist of 9 to 11 genes arranged in tandem. This gene, HOXC6, is one of several HOXC genes located in a cluster on chromosome 12. Three genes, HOXC5, HOXC4 and HOXC6, share a 5' non-coding exon. Transcripts may include the shared exon spliced to the gene-specific exons, or they may include only the gene-specific exons. Alternatively spliced transcript variants encoding different isoforms have been identified for HOXC6. Transcript variant two includes the shared exon, and transcript variant one includes only gene-specific exons. [provided by RefSeq, Jul 2008]
Function	Sequence-specific transcription factor which is part of a developmental regulatory system that provides cells with specific positional identities on the anterior-posterior axis. [UniProt]
Calculated Mw	27 kDa
Cellular Localization	Nucleus. [UniProt]

Images



ARG66731 anti-HOXC6 antibody ICC/IF image

Immunofluorescence: Formalin-fixed K562 cells were permeabilized with 0.1% Triton X-100 in TBS for 5-10 minutes and blocked with 3% BSA-PBS for 30 minutes at room temperature. Cells were stained with ARG66731 anti-HOXC6 antibody (red) in 3% BSA-PBS and incubated overnight at 4°C. Cells were washed with PBST and incubated with a Dylight 594-conjugated secondary antibody in PBS at room temperature in the dark.



ARG66731 anti-HOXC6 antibody IHC-P image

Immunohistochemistry: Formalin-fixed and paraffin-embedded Human prostate cancer tissue section. Antigen Retrieval: Heat mediation was performed in Sodium citrate buffer (pH 6.0). The section was stained with ARG66731 anti-HOXC6 antibody at room temperature. The section was counterstained with haematoxylin and mounted with DPX.

ARG66731 anti-HOXC6 antibody WB image

Western blot: K562, Mouse brain and Rat muscle whole cell lysates stained with ARG66731 anti-HOXC6 antibody.

