

ARG66660 anti-MMP11 antibody

Package: 100 µg
Store at: -20°C

Summary

Product Description	Rabbit Polyclonal antibody recognizes MMP11
Tested Reactivity	Hu
Tested Application	ICC/IF, IHC-P, WB
Host	Rabbit
Clonality	Polyclonal
Isotype	IgG
Target Name	MMP11
Species	Human
Immunogen	Synthetic peptide within aa. 30-110 of Human MMP11.
Conjugation	Un-conjugated
Alternate Names	SL-3; STMY3; EC 3.4.24.-; ST3; Matrix metalloproteinase-11; MMP-11; Stromelysin-3

Application Instructions

Application table	Application	Dilution
	ICC/IF	1:200 - 1:1000
	IHC-P	1:100 - 1:300
	WB	1:500 - 1:2000
Application Note	IHC-P: Antigen Retrieval: High-pressure and temperature Tris/EDTA buffer (pH 8.0). * The dilutions indicate recommended starting dilutions and the optimal dilutions or concentrations should be determined by the scientist.	
Observed Size	~ 65 kDa	

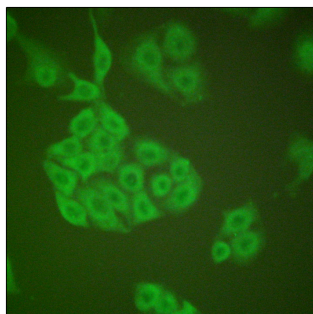
Properties

Form	Liquid
Purification	Affinity purification with immunogen.
Buffer	PBS, 0.02% Sodium azide, 50% Glycerol and 0.5% BSA.
Preservative	0.02% Sodium azide
Stabilizer	50% Glycerol and 0.5% BSA
Concentration	1 mg/ml
Storage instruction	For continuous use, store undiluted antibody at 2-8°C for up to a week. For long-term storage, aliquot and store at -20°C. Storage in frost free freezers is not recommended. Avoid repeated freeze/thaw cycles. Suggest spin the vial prior to opening. The antibody solution should be gently mixed before use.

Bioinformation

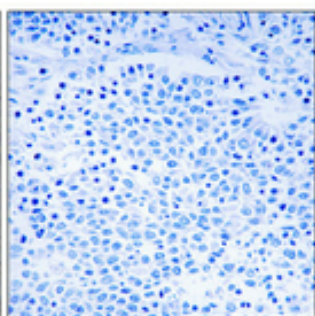
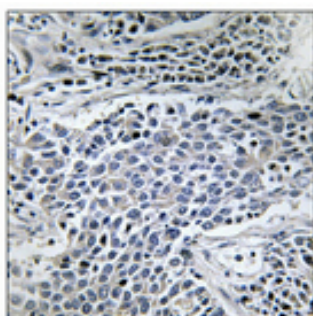
Gene Symbol	MMP11
Gene Full Name	matrix metalloproteinase 11
Background	Proteins of the matrix metalloproteinase (MMP) family are involved in the breakdown of extracellular matrix in normal physiological processes, such as embryonic development, reproduction, and tissue remodeling, as well as in disease processes, such as arthritis and metastasis. Most MMP's are secreted as inactive proproteins which are activated when cleaved by extracellular proteinases. However, the enzyme encoded by this gene is activated intracellularly by furin within the constitutive secretory pathway. Also in contrast to other MMP's, this enzyme cleaves alpha 1-proteinase inhibitor but weakly degrades structural proteins of the extracellular matrix. [provided by RefSeq, Jul 2008]
Function	May play an important role in the progression of epithelial malignancies. [UniProt]
Calculated Mw	55 kDa
PTM	The precursor is cleaved by a furin endopeptidase. [UniProt]
Cellular Localization	Secreted, extracellular space, extracellular matrix. [UniProt]

Images



ARG66660 anti-MMP11 antibody ICC/IF image

Immunofluorescence: A549 cells stained with ARG66660 anti-MMP11 antibody. The picture on the right is blocked with the synthetic peptide.



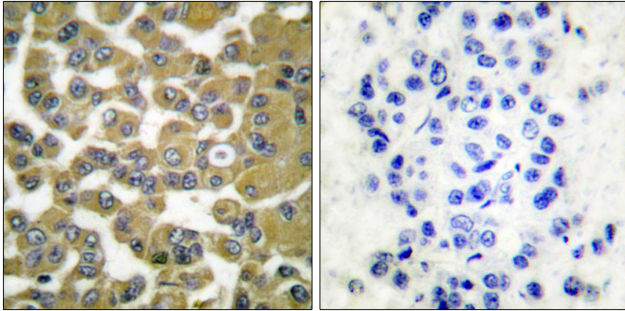
ARG66660 anti-MMP11 antibody IHC-P image

Immunohistochemistry: Paraffin-embedded Human lung cancer tissue stained with ARG66660 anti-MMP11 antibody at 1:100 dilution, overnight at 4°C. Antigen Retrieval: High-pressure and temperature Tris/EDTA buffer (pH 8.0). Negative control (right): Antibody was pre-absorbed by immunogen peptide.



ARG66660 anti-MMP11 antibody WB image

Western blot: A549 cell lysate stained with ARG66660 anti-MMP11 antibody at 1:500 dilution.



ARG66660 anti-MMP11 antibody IHC-P image

Immunohistochemistry: Paraffin-embedded Human breast carcinoma tissue stained with ARG66660 anti-MMP11 antibody. The picture on the right is blocked with the synthetic peptide.