

## ARG66629 anti-Synaptophysin antibody [SQab19147]

Package: 100 µl  
Store at: -20°C

### Summary

Product Description	Recombinant Rabbit Monoclonal antibody [SQab19147] recognizes Synaptophysin
Tested Reactivity	Hu, Ms, Rat
Tested Application	IHC-P, WB
Host	Rabbit
Clonality	Monoclonal
Clone	SQab19147
Isotype	IgG
Target Name	Synaptophysin
Species	Human
Immunogen	Synthetic peptide within aa. 213-313 of Human Synaptophysin.
Conjugation	Un-conjugated
Alternate Names	Synaptophysin; MRXSYP; Major synaptic vesicle protein p38; MRX96

### Application Instructions

Application table	Application	Dilution
	IHC-P	1:100 - 1:200
	WB	1:500
Application Note	<p>IHC-P: Antigen Retrieval: Heat mediation was performed in Tris/EDTA buffer (pH 9.0), primary antibody incubate at RT (18°C - 25°C) for 30 minutes.</p> <p>* The dilutions indicate recommended starting dilutions and the optimal dilutions or concentrations should be determined by the scientist.</p>	

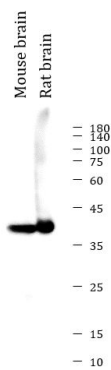
### Properties

Form	Liquid
Purification	Purification with Protein A.
Buffer	PBS, 0.01% Sodium azide, 40% Glycerol and 0.05% BSA.
Preservative	0.01% Sodium azide
Stabilizer	40% Glycerol and 0.05% BSA
Storage instruction	For continuous use, store undiluted antibody at 2-8°C for up to a week. For long-term storage, aliquot and store at -20°C. Storage in frost free freezers is not recommended. Avoid repeated freeze/thaw cycles. Suggest spin the vial prior to opening. The antibody solution should be gently mixed before use.
Note	For laboratory research only, not for drug, diagnostic or other use.

Bioinformation

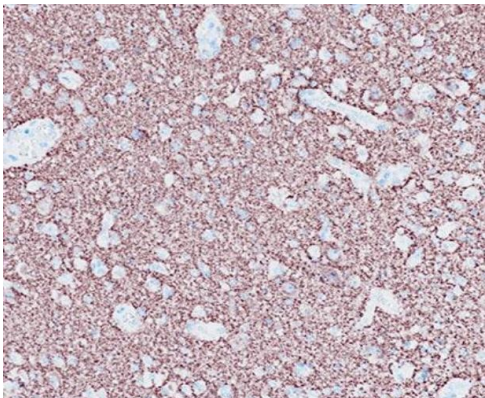
Gene Symbol	SYP
Gene Full Name	synaptophysin
Background	This gene encodes an integral membrane protein of small synaptic vesicles in brain and endocrine cells. The protein also binds cholesterol and is thought to direct targeting of vesicle-associated membrane protein 2 (synaptobrevin) to intracellular compartments. Mutations in this gene are associated with X-linked mental retardation (XLMR). [provided by RefSeq, Aug 2011]
Function	Possibly involved in structural functions as organizing other membrane components or in targeting the vesicles to the plasma membrane. Involved in the regulation of short-term and long-term synaptic plasticity (By similarity). [UniProt]
Calculated Mw	34 kDa
PTM	Ubiquitinated; mediated by SIAH1 or SIAH2 and leading to its subsequent proteasomal degradation. [UniProt]
Cellular Localization	Cytoplasmic vesicle, secretory vesicle, synaptic vesicle membrane; Multi-pass membrane protein. Cell junction, synapse, synaptosome. [UniProt]

Images



ARG66629 anti-Synaptophysin antibody [SQab19147] WB image

Western blot: 20 µg of Mouse brain and Rat brain lysates stained with ARG66629 anti-Synaptophysin antibody [SQab19147] at 1:500 dilution.



ARG66629 anti-Synaptophysin antibody [SQab19147] IHC-P image

Immunohistochemistry: Formalin/PFA-fixed and paraffin-embedded Human glioma tissue stained with ARG66629 anti-Synaptophysin antibody [SQab19147]. Antigen Retrieval: Heat mediation was performed in Tris/EDTA buffer (pH 9.0).