

ARG66532 anti-IL37 / IL1F7 / FIL1 zeta antibody

Package: 100 µl
Store at: -20°C

Summary

Product Description	Rabbit Polyclonal antibody recognizes IL37 / IL1F7 / FIL1 zeta
Tested Reactivity	Hu, Ms, Rat
Tested Application	WB
Host	Rabbit
Clonality	Polyclonal
Isotype	IgG
Target Name	IL37 / IL1F7 / FIL1 zeta
Species	Human
Immunogen	KLH-conjugated synthetic peptide around the center region of Human IL37.
Conjugation	Un-conjugated
Alternate Names	Interleukin-1 zeta; IL-1 zeta; FIL1; Interleukin-37; IL-1X; IL-1F7; FIL1 zeta; IL-1H4; Interleukin-1 homolog 4; FIL1Z; IL1H4; Interleukin-1 family member 7; Interleukin-23; IL-37; FIL1(ZETA); IL-1H; IL-1RP1; IL1RP1; IL1F7; Interleukin-1-related protein

Application Instructions

Application table	Application	Dilution
	WB	1:500 - 1:1000
Application Note	* The dilutions indicate recommended starting dilutions and the optimal dilutions or concentrations should be determined by the scientist.	
Observed Size	~ 25 kDa	

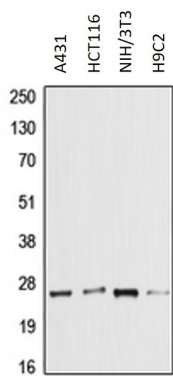
Properties

Form	Liquid
Purification	Affinity purification with immunogen.
Buffer	0.42% Potassium phosphate (pH 7.3), 0.87% NaCl, 0.01% Sodium azide and 30% Glycerol.
Preservative	0.01% Sodium azide
Stabilizer	30% Glycerol
Storage instruction	For continuous use, store undiluted antibody at 2-8°C for up to a week. For long-term storage, aliquot and store at -20°C. Storage in frost free freezers is not recommended. Avoid repeated freeze/thaw cycles. Suggest spin the vial prior to opening. The antibody solution should be gently mixed before use.
Note	For laboratory research only, not for drug, diagnostic or other use.

Bioinformation

Gene Symbol	IL37
Gene Full Name	interleukin 37
Background	The protein encoded by this gene is a member of the interleukin 1 cytokine family. This cytokine can bind to, and may be a ligand for interleukin 18 receptor (IL18R1/IL-1Rrp). This cytokine also binds to interleukin 18 binding protein (IL18BP), an inhibitory binding protein of interleukin 18 (IL18), and subsequently forms a complex with IL18 receptor beta subunit, and through which it inhibits the activity of IL18. This gene along with eight other interleukin 1 family genes form a cytokine gene cluster on chromosome 2. Five alternatively spliced transcript variants encoding distinct isoforms have been reported. [provided by RefSeq, Jul 2008]
Function	Suppressor of innate inflammatory and immune responses involved in curbing excessive inflammation. This function requires SMAD3. Suppresses, or reduces, proinflammatory cytokine production, including IL1A and IL6, as well as CCL12, CSF1, CSF2, CXCL13, IL1B, IL23A and IL1RN, but spares anti-inflammatory cytokines. Inhibits dendritic cell activation. [UniProt]
Calculated Mw	24 kDa
PTM	Proteolytically converted to the mature form by CASP1. [UniProt]
Cellular Localization	Cytoplasm, cytosol. Nucleus. Secreted. Note=Stimulation with IL1B leads to colocalization with SMAD3 mostly in perinuclear regions (PubMed:20935647). Only the CASP1-cleaved mature form translocates into the nucleus upon LPS stimulation (PubMed:18390730). [UniProt]

Images



ARG66532 anti-IL37 / IL1F7 / FIL1 zeta antibody WB image

Western blot: A431, HCT116, NIH/3T3 and H9C2 whole cell lysates stained with ARG66532 anti-IL37 / IL1F7 / FIL1 zeta antibody.