

ARG66520
anti-S100A6 antibodyPackage: 100 µl
Store at: -20°C

Summary

Product Description	Mouse Monoclonal antibody recognizes S100A6
Tested Reactivity	Hu
Tested Application	IHC-P
Host	Mouse
Clonality	Monoclonal
Isotype	IgG1, kappa
Target Name	S100A6
Species	Human
Immunogen	Synthetic peptide derived from Human S100A6.
Conjugation	Un-conjugated
Alternate Names	S100 calcium-binding protein A6; PRA; MLN 4; 5B10; Prolactin receptor-associated protein; CACY; Growth factor-inducible protein 2A9; Protein S100-A6; Calcyclin; CABP; 2A9

Application Instructions

Application table	Application	Dilution
	IHC-P	1:100 - 1:500
Application Note	IHC-P: Antigen Retrieval: Tris/EDTA buffer (pH 8.0) was used. * The dilutions indicate recommended starting dilutions and the optimal dilutions or concentrations should be determined by the scientist.	

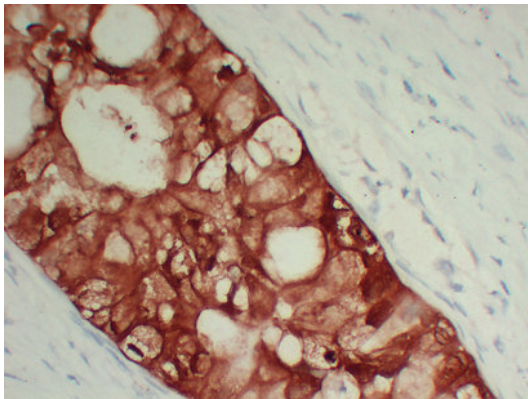
Properties

Form	Liquid
Purification	Affinity purification with immunogen.
Buffer	PBS, 0.02% Sodium azide, 50% Glycerol and 0.5% BSA.
Preservative	0.02% Sodium azide
Stabilizer	50% Glycerol and 0.5% BSA
Concentration	1 mg/ml
Storage instruction	For continuous use, store undiluted antibody at 2-8°C for up to a week. For long-term storage, aliquot and store at -20°C. Storage in frost free freezers is not recommended. Avoid repeated freeze/thaw cycles. Suggest spin the vial prior to opening. The antibody solution should be gently mixed before use.
Note	For laboratory research only, not for drug, diagnostic or other use.

Bioinformation

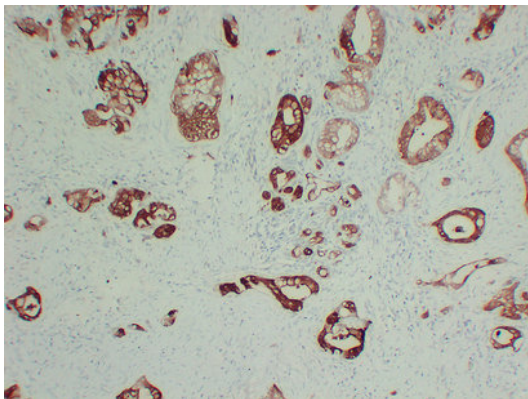
Gene Symbol	S100A6
Gene Full Name	S100 calcium binding protein A6
Background	The protein encoded by this gene is a member of the S100 family of proteins containing 2 EF-hand calcium-binding motifs. S100 proteins are localized in the cytoplasm and/or nucleus of a wide range of cells, and involved in the regulation of a number of cellular processes such as cell cycle progression and differentiation. S100 genes include at least 13 members which are located as a cluster on chromosome 1q21. This protein may function in stimulation of Ca2+-dependent insulin release, stimulation of prolactin secretion, and exocytosis. Chromosomal rearrangements and altered expression of this gene have been implicated in melanoma. [provided by RefSeq, Jul 2008]
Function	May function as calcium sensor and modulator, contributing to cellular calcium signaling. May function by interacting with other proteins, such as TPR-containing proteins, and indirectly play a role in many physiological processes such as the reorganization of the actin cytoskeleton and in cell motility. Binds 2 calcium ions. Calcium binding is cooperative. [UniProt]
Calculated Mw	10 kDa
PTM	The N-terminus is blocked. [UniProt]
Cellular Localization	Nucleus envelope. Cytoplasm. Cell membrane; Peripheral membrane protein; Cytoplasmic side. [UniProt]

Images



ARG66520 anti-S100A6 antibody IHC-P image

Immunohistochemistry: Paraffin-embedded Human pancreatic adenocarcinoma (high magnification) stained with ARG66520 anti-S100A6 antibody at 1:200 (4°C, overnight). Antigen Retrieval: Tris/EDTA buffer (pH 8.0) was used.



ARG66520 anti-S100A6 antibody IHC-P image

Immunohistochemistry: Paraffin-embedded Human pancreatic adenocarcinoma stained with ARG66520 anti-S100A6 antibody at 1:200 (4°C, overnight). Antigen Retrieval: Tris/EDTA buffer (pH 8.0) was used.