

ARG66504 anti-PTH / Parathyroid Hormone antibody

Package: 100 µl
Store at: -20°C

Summary

Product Description	Mouse Monoclonal antibody recognizes PTH / Parathyroid Hormone
Tested Reactivity	Hu
Tested Application	IHC-P
Host	Mouse
Clonality	Monoclonal
Isotype	IgG
Target Name	PTH / Parathyroid Hormone
Species	Human
Immunogen	Synthetic peptide derived from Human Parathyroid Hormone.
Conjugation	Un-conjugated
Alternate Names	PTH1; Parathyroid hormone; Parathyrin; Parathormone; PTH

Application Instructions

Application table	Application	Dilution
	IHC-P	1:100 - 1:500
Application Note	IHC-P: Antigen Retrieval: Tris/EDTA buffer (pH 8.0) was used. * The dilutions indicate recommended starting dilutions and the optimal dilutions or concentrations should be determined by the scientist.	

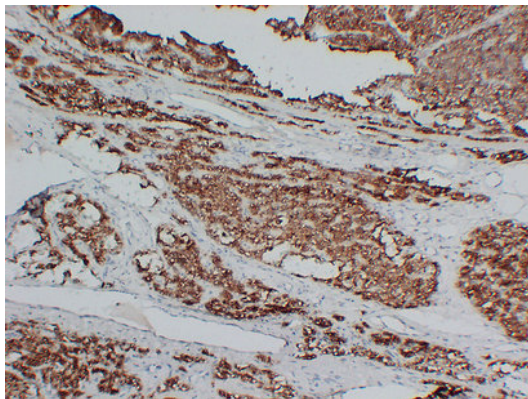
Properties

Form	Liquid
Purification	Affinity purification with immunogen.
Buffer	PBS, 0.02% Sodium azide, 50% Glycerol and 0.5% BSA.
Preservative	0.02% Sodium azide
Stabilizer	50% Glycerol and 0.5% BSA
Concentration	1 mg/ml
Storage instruction	For continuous use, store undiluted antibody at 2-8°C for up to a week. For long-term storage, aliquot and store at -20°C. Storage in frost free freezers is not recommended. Avoid repeated freeze/thaw cycles. Suggest spin the vial prior to opening. The antibody solution should be gently mixed before use.
Note	For laboratory research only, not for drug, diagnostic or other use.

Bioinformation

Gene Symbol	PTH
Gene Full Name	parathyroid hormone
Background	The protein encoded by this gene is a hormone secreted by parathyroid cells. This hormone elevates blood Ca ²⁺ level by dissolving the salts in bone and preventing their renal excretion. Defects in this gene are a cause of familial isolated hypoparathyroidism (FIH). [provided by RefSeq, Jul 2008]
Function	PTH elevates calcium level by dissolving the salts in bone and preventing their renal excretion. Stimulates [1- ¹⁴ C]-2-deoxy-D-glucose (2DG) transport and glycogen synthesis in osteoblastic cells. [UniProt]
Calculated Mw	13 kDa
Cellular Localization	Secreted. [UniProt]

Images



ARG66504 anti-PTH / Parathyroid Hormone antibody IHC-P image

Immunohistochemistry: Paraffin-embedded Human parathyroidoma stained with ARG66504 anti-PTH / Parathyroid Hormone antibody at 1:200 (4°C, overnight). Antigen Retrieval: Tris/EDTA buffer (pH 8.0) was used.
