

ARG66499 anti-IGF2 antibody

Package: 100 µl
Store at: -20°C

Summary

Product Description	Mouse Monoclonal antibody recognizes IGF2
Tested Reactivity	Hu
Tested Application	IHC-P
Host	Mouse
Clonality	Monoclonal
Isotype	IgG2b, kappa
Target Name	IGF2
Species	Human
Immunogen	Synthetic peptide derived from Human IGF2.
Conjugation	Un-conjugated
Alternate Names	Somatomedin-A; Insulin-like growth factor II; IGF-II; PP9974; GRDF; C11orf43; T3M-11-derived growth factor

Application Instructions

Application table	Application	Dilution
	IHC-P	1:100 - 1:500
Application Note	IHC-P: Antigen Retrieval: Tris/EDTA buffer (pH 8.0) was used. * The dilutions indicate recommended starting dilutions and the optimal dilutions or concentrations should be determined by the scientist.	

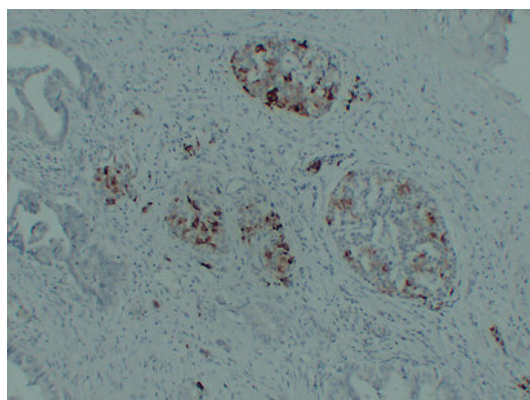
Properties

Form	Liquid
Purification	Affinity purification with immunogen.
Buffer	PBS, 0.02% Sodium azide, 50% Glycerol and 0.5% BSA.
Preservative	0.02% Sodium azide
Stabilizer	50% Glycerol and 0.5% BSA
Concentration	1 mg/ml
Storage instruction	For continuous use, store undiluted antibody at 2-8°C for up to a week. For long-term storage, aliquot and store at -20°C. Storage in frost free freezers is not recommended. Avoid repeated freeze/thaw cycles. Suggest spin the vial prior to opening. The antibody solution should be gently mixed before use.
Note	For laboratory research only, not for drug, diagnostic or other use.

Bioinformation

Gene Symbol	IGF2
Gene Full Name	insulin-like growth factor 2
Background	This gene encodes a member of the insulin family of polypeptide growth factors, which are involved in development and growth. It is an imprinted gene, expressed only from the paternal allele, and epigenetic changes at this locus are associated with Wilms tumour, Beckwith-Wiedemann syndrome, rhabdomyosarcoma, and Silver-Russell syndrome. A read-through INS-IGF2 gene exists, whose 5' region overlaps the INS gene and the 3' region overlaps this gene. Alternatively spliced transcript variants encoding different isoforms have been found for this gene. [provided by RefSeq, Oct 2010]
Function	<p>The insulin-like growth factors possess growth-promoting activity. In vitro, they are potent mitogens for cultured cells. IGF-II is influenced by placental lactogen and may play a role in fetal development.</p> <p>Preptin undergoes glucose-mediated co-secretion with insulin, and acts as physiological amplifier of glucose-mediated insulin secretion. Exhibits osteogenic properties by increasing osteoblast mitogenic activity through phosphoactivation of MAPK1 and MAPK3. [UniProt]</p>
Calculated Mw	20 kDa
PTM	<p>O-glycosylated with core 1 or possibly core 8 glycans. Thr-96 is a minor glycosylation site compared to Thr-99.</p> <p>Proteolytically processed by PCSK4, proIGF2 is cleaved at Arg-128 and Arg-92 to generate big-IGF2 and mature IGF2. [UniProt]</p>
Cellular Localization	Secreted. [UniProt]

Images



ARG66499 anti-IGF2 antibody IHC-P image

Immunohistochemistry: Paraffin-embedded Human pancreatic carcinoma stained with ARG66499 anti-IGF2 antibody at 1:200 (4°C, overnight). Antigen Retrieval: Tris/EDTA buffer (pH 8.0) was used.