

**ARG66485**  
**anti-Claudin 18 antibody**Package: 100 µl  
Store at: -20°C

### Summary

Product Description	Mouse Monoclonal antibody recognizes Claudin 18
Tested Reactivity	Hu
Tested Application	IHC-P
Host	Mouse
Clonality	Monoclonal
Isotype	IgG1, kappa
Target Name	Claudin 18
Species	Human
Immunogen	Synthetic peptide derived from Human Claudin 18.
Conjugation	Un-conjugated
Alternate Names	Claudin-18; SFTPJ; SFTA5

### Application Instructions

Application table	Application	Dilution
	IHC-P	1:100 - 1:500
Application Note	IHC-P: Antigen Retrieval: Citrate buffer (pH 6.0) was used. * The dilutions indicate recommended starting dilutions and the optimal dilutions or concentrations should be determined by the scientist.	

### Properties

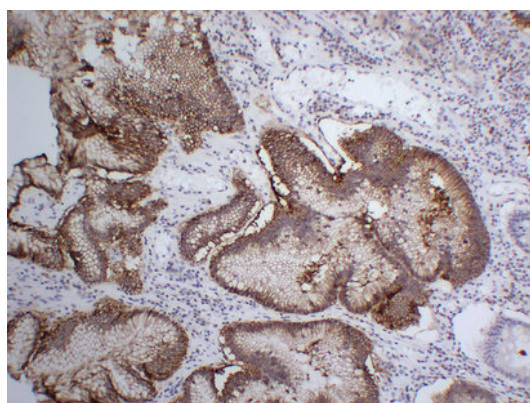
Form	Liquid
Purification	Affinity purification with immunogen.
Buffer	PBS, 0.02% Sodium azide, 50% Glycerol and 0.5% BSA.
Preservative	0.02% Sodium azide
Stabilizer	50% Glycerol and 0.5% BSA
Concentration	1 mg/ml
Storage instruction	For continuous use, store undiluted antibody at 2-8°C for up to a week. For long-term storage, aliquot and store at -20°C. Storage in frost free freezers is not recommended. Avoid repeated freeze/thaw cycles. Suggest spin the vial prior to opening. The antibody solution should be gently mixed before use.
Note	For laboratory research only, not for drug, diagnostic or other use.

### Bioinformation

Gene Symbol	CLDN18
Gene Full Name	claudin 18
Background	This gene encodes a member of the claudin family. Claudins are integral membrane proteins and components of tight junction strands. Tight junction strands serve as a physical barrier to prevent solutes and water from passing freely through the paracellular space between epithelial or endothelial cell sheets, and also play critical roles in maintaining cell polarity and signal transductions. This gene is upregulated in patients with ulcerative colitis and highly overexpressed in infiltrating ductal adenocarcinomas. PKC/MAPK/AP-1 (protein kinase C/mitogen-activated protein kinase/activator protein-1) dependent pathway regulates the expression of this gene in gastric cells. Alternatively spliced transcript variants encoding different isoforms have been identified. [provided by RefSeq, Jun 2010]
Function	Plays a major role in tight junction-specific obliteration of the intercellular space, through calcium-independent cell-adhesion activity. [UniProt]
Calculated Mw	28 kDa
Cellular Localization	Cell junction, tight junction. Cell membrane; Multi-pass membrane protein. [UniProt]

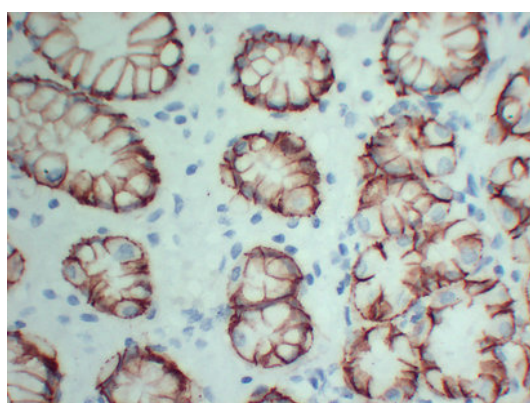
## Images

---



ARG66485 anti-Claudin 18 antibody IHC-P image

Immunohistochemistry: Paraffin-embedded Human stomach stained with ARG66485 anti-Claudin 18 antibody at 1:200 (4°C, overnight). Antigen Retrieval: Citric acid buffer (pH 6.0) was used.



ARG66485 anti-Claudin 18 antibody IHC-P image

Immunohistochemistry: Paraffin-embedded Human stomach (high magnification) stained with ARG66485 anti-Claudin 18 antibody at 1:200 (4°C, overnight). Antigen Retrieval: Citrate buffer (pH 6.0) was used.