

## ARG66457 anti-REG4 antibody

Package: 100 µl  
Store at: -20°C

### Summary

Product Description	Rabbit Polyclonal antibody recognizes REG4
Tested Reactivity	Hu, Ms, Rat
Predict Reactivity	Pig
Tested Application	IHC-P, WB
Host	Rabbit
Clonality	Polyclonal
Isotype	IgG
Target Name	REG4
Species	Human
Immunogen	KLH-conjugated synthetic peptide within the center region of Human REG4.
Conjugation	Un-conjugated
Alternate Names	GISP; REG-like protein; Reg IV; RELP; Gastrointestinal secretory protein; Regenerating islet-derived protein 4; Regenerating islet-derived protein IV; REG-4; REG-IV

### Application Instructions

Application table	Application	Dilution
	IHC-P	1:100 - 1:200
	WB	1:500 - 1:1000
Application Note	IHC-P: Antigen Retrieval: Heat mediation was performed in Sodium citrate buffer (pH 6.0). * The dilutions indicate recommended starting dilutions and the optimal dilutions or concentrations should be determined by the scientist.	

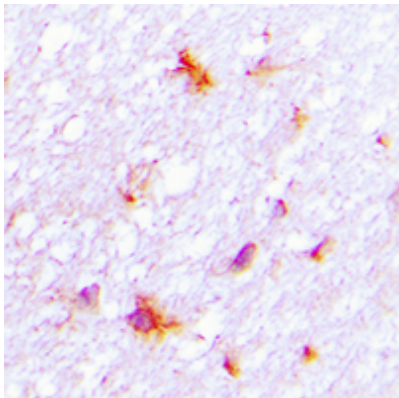
### Properties

Form	Liquid
Purification	Affinity purification with immunogen.
Buffer	0.42% Potassium phosphate (pH 7.3), 0.87% NaCl, 0.01% Sodium azide and 30% Glycerol.
Preservative	0.01% Sodium azide
Stabilizer	30% Glycerol
Storage instruction	For continuous use, store undiluted antibody at 2-8°C for up to a week. For long-term storage, aliquot and store at -20°C. Storage in frost free freezers is not recommended. Avoid repeated freeze/thaw cycles. Suggest spin the vial prior to opening. The antibody solution should be gently mixed before use.
Note	For laboratory research only, not for drug, diagnostic or other use.

Bioinformation

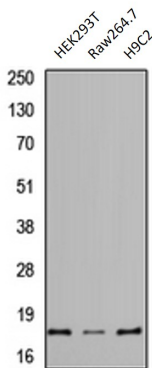
Gene Symbol	REG4
Gene Full Name	regenerating islet-derived family, member 4
Function	Calcium-independent lectin displaying mannose-binding specificity and able to maintain carbohydrate recognition activity in an acidic environment. May be involved in inflammatory and metaplastic responses of the gastrointestinal epithelium. [UniProt]
Calculated Mw	18 kDa
Cellular Localization	Secreted. [UniProt]

Images



ARG66457 anti-REG4 antibody IHC-P image

Immunohistochemistry: Formalin-fixed and paraffin-embedded Human brain. Antigen Retrieval: Heat mediation was performed in Sodium citrate buffer (pH 6.0). The section was then incubated with ARG66457 anti-REG4 antibody at room temperature and detected using an HRP conjugated compact polymer system. DAB was used as the chromogen. The section was then counterstained with haematoxylin and mounted with DPX.



ARG66457 anti-REG4 antibody WB image

Western blot: HEK293T, Raw264.7 and H9C2 whole cell lysates stained with ARG66457 anti-REG4 antibody.