

ARG66430 anti-GIF / Gastric intrinsic factor antibody [SQab18119]

Package: 100 µg
Store at: -20°C

Summary

Product Description	Mouse Monoclonal antibody [SQab18119] recognizes GIF / Gastric intrinsic factor
Tested Reactivity	Hu, Ms
Tested Application	ELISA, FACS, ICC/IF, IHC-P, WB
Host	Mouse
Clonality	Monoclonal
Clone	SQab18119
Isotype	IgG1, kappa
Target Name	GIF / Gastric intrinsic factor
Species	Human
Immunogen	Recombinant Human GIF / Gastric intrinsic factor protein.
Conjugation	Un-conjugated
Alternate Names	Gastric intrinsic factor; IFMH; TCN3; Intrinsic factor; INF; IF

Application Instructions

Application table	Application	Dilution
	ELISA	1:3000 - 1:10000
	FACS	1:400 - 1:1000
	ICC/IF	1:400 - 1:1000
	IHC-P	Assay-dependent
	WB	1:2500 - 1:5000
Application Note	* The dilutions indicate recommended starting dilutions and the optimal dilutions or concentrations should be determined by the scientist.	

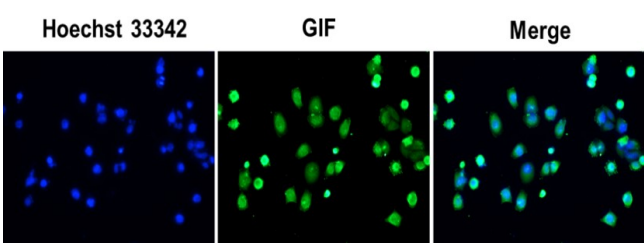
Properties

Purification	Affinity purification with immunogen.
Buffer	PBS (pH 7.4) and 0.01% Thimerosal.
Preservative	0.01% Thimerosal
Concentration	1 mg/ml
Storage instruction	For continuous use, store undiluted antibody at 2-8°C for up to a week. For long-term storage, aliquot and store at -20°C or below. Storage in frost free freezers is not recommended. Avoid repeated freeze/thaw cycles. Suggest spin the vial prior to opening. The antibody solution should be gently mixed before use.

Bioinformation

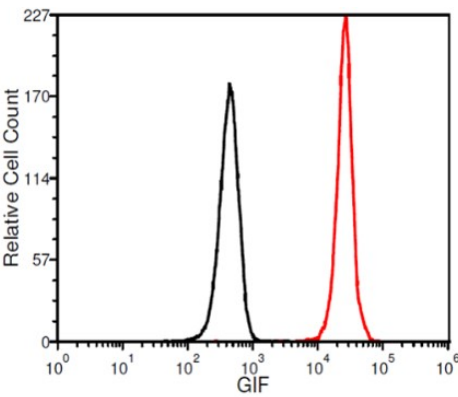
Gene Symbol	GIF
Gene Full Name	gastric intrinsic factor (vitamin B synthesis)
Background	This gene is a member of the cobalamin transport protein family. It encodes a glycoprotein secreted by parietal cells of the gastric mucosa and is required for adequate absorption of vitamin B12. Vitamin B12 is necessary for erythrocyte maturation and mutations in this gene may lead to congenital pernicious anemia. [provided by RefSeq, Jul 2008]
Function	Promotes absorption of the essential vitamin cobalamin (Cbl) in the ileum. After interaction with CUBN, the GIF-cobalamin complex is internalized via receptor-mediated endocytosis. [UniProt]
Calculated Mw	45 kDa
Cellular Localization	Secreted. [UniProt]

Images



ARG66430 anti-GIF / Gastric intrinsic factor antibody [SQab18119]
ICC/IF image

Immunofluorescence: HeLa cells were fixed in 4% PFA, permeabilized with PBS containing 0.1% Triton X-100. Cells were stained with ARG66430 anti-GIF / Gastric intrinsic factor antibody [SQab18119] (green) at 1:100 and cell nuclei were stained with Hoechst 33342 (blue).

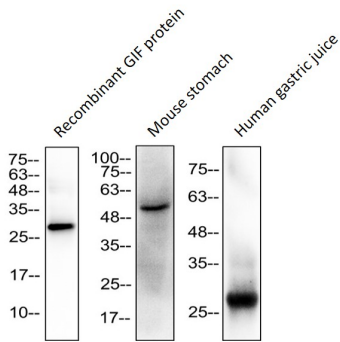


ARG66430 anti-GIF / Gastric intrinsic factor antibody [SQab18119]
FACS image

Flow Cytometry: K562 cells were stained with ARG66430 anti-GIF / Gastric intrinsic factor antibody [SQab18119] at 2 µg/ml (red) and without antibody control (black).

ARG66430 anti-GIF / Gastric intrinsic factor antibody [SQab18119]
WB image

Western blot: 100 ng of Recombinant GIF protein, 30 µg of Mouse stomach lysate and 10 µl of Human gastric juice stained with ARG66430 anti-GIF / Gastric intrinsic factor antibody [SQab18119] at 1:5000 dilution.



ARG66430 anti-GIF / Gastric intrinsic factor antibody [SQab18119]
ELISA image

ELISA: Titration curve of ARG66430 anti-GIF / Gastric intrinsic factor antibody [SQab18119]. Red: GIF; Black: BSA (negative control).

