

ARG66422 anti-IL38 antibody [SQab18124]

Package: 100 µg
Store at: -20°C

Summary

Product Description	Mouse Monoclonal antibody [SQab18124] recognizes IL38
Tested Reactivity	Hu
Tested Application	ELISA, FACS, ICC/IF, IHC-P, WB
Host	Mouse
Clonality	Monoclonal
Clone	SQab18124
Isotype	IgG2b, kappa
Target Name	IL38
Species	Human
Immunogen	Recombinant Human IL38 protein.
Conjugation	Un-conjugated
Alternate Names	IL1F10; Interleukin 1 Family Member 10; IL-1HY2; IL1-Theta; IL-1F10; FKSG75; Interleukin-1 Receptor Antagonist FKSG75; Interleukin-1 Family Member 10; Family Of Interleukin 1-Theta; Interleukin-1 HY2; Interleukin-38; FIL1 Theta; IL-1 Theta; MGC119832; MGC119833; MGC11983; IL1HY2; IL-38; Interleukin-1 Receptor Antagonist-Like FIL1 Theta; Interleukin 1 Family, Member 10 (Theta); Interleukin 1 Family Member 10 (Theta); IL-1F10 (Canonical Form IL-1F10a); Interleukin-1 Theta; FIL1- Theta; FIL1-Theta; FIL1T; IL38

Application Instructions

Application table	Application	Dilution
	ELISA	1:3000 - 1:10000
	FACS	1:400 - 1:1000
	ICC/IF	1:400 - 1:1000
	IHC-P	Assay-dependent
	WB	1:2500 - 1:5000
Application Note	* The dilutions indicate recommended starting dilutions and the optimal dilutions or concentrations should be determined by the scientist.	

Properties

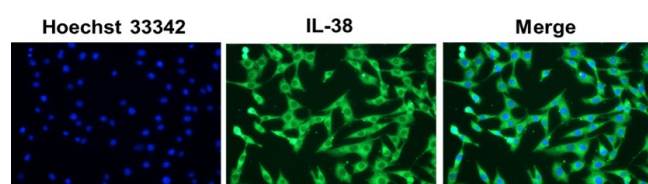
Purification	Affinity purification with immunogen.
Buffer	PBS (pH 7.4) and 0.01% Thimerosal.
Preservative	0.01% Thimerosal
Concentration	1 mg/ml

Storage instruction	For continuous use, store undiluted antibody at 2-8°C for up to a week. For long-term storage, aliquot and store at -20°C or below. Storage in frost free freezers is not recommended. Avoid repeated freeze/thaw cycles. Suggest spin the vial prior to opening. The antibody solution should be gently mixed before use.
Note	For laboratory research only, not for drug, diagnostic or other use.

Bioinformation

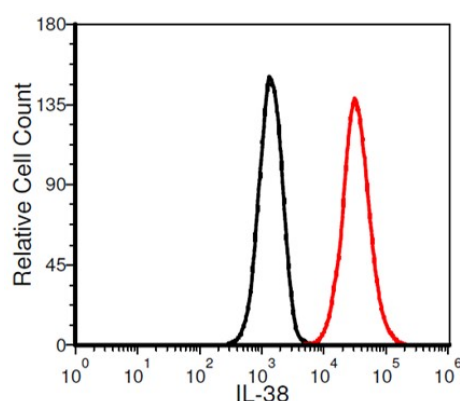
Gene Symbol	IL1F10
Gene Full Name	interleukin 1 family, member 10 (theta)
Background	The protein encoded by this gene is a member of the interleukin 1 cytokine family. This gene and eight other interleukin 1 family genes form a cytokine gene cluster on chromosome 2. This cytokine is thought to participate in a network of interleukin 1 family members to regulate adapted and innate immune responses. Two alternatively spliced transcript variants encoding the same protein have been reported. [provided by RefSeq, Jul 2008]
Function	Cytokine with immunomodulatory activity. Alone, does not induce cytokine production, but reduces IL22 and IL17A production by T-cells in response to heat-killed <i>Candida albicans</i> . Reduces IL36G-induced production of IL8 by peripheral blood mononuclear cells. Increases IL6 production by dendritic cells stimulated by bacterial lipopolysaccharides (LPS). Ligand for IL-36R/IL1RL2. [UniProt]
Calculated Mw	17 kDa
Cellular Localization	Secreted. [UniProt]

Images



ARG66422 anti-IL38 antibody [SQab18124] ICC/IF image

Immunofluorescence: A549 cells were fixed in 4% PFA, permeabilized with PBS containing 0.1% Triton X-100. Cells were stained with ARG66422 anti-IL38 antibody [SQab18124] (green) at 1:200 dilution and cell nuclei were stained with Hoechst 33342 (blue).

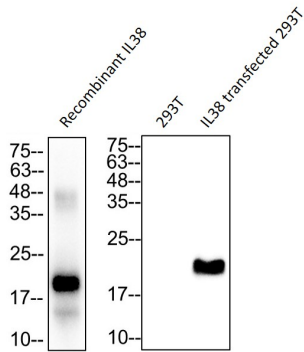


ARG66422 anti-IL38 antibody [SQab18124] FACS image

Flow Cytometry: A549 cells were stained with ARG66422 anti-IL38 antibody [SQab18124] at 2 µg/ml (red) and without antibody control (black).

ARG66422 anti-IL38 antibody [SQab18124] WB image

Western blot: 50 ng of Recombinant IL38 protein, 30 µg of 293T and 30 µg of IL38 transfected 293T cell lysates stained with ARG66422 anti-IL38 antibody [SQab18124] at 1:5000 dilution.



ARG66422 anti-IL38 antibody [SQab18124] ELISA image

ELISA: Titration curve of ARG66422 anti-IL38 antibody [SQab18124]. Red: IL38; Black: BSA (negative control).

