

ARG66392 anti-PTHrP antibody

Package: 100 µg
Store at: -20°C

Summary

Product Description	Rabbit Polyclonal antibody recognizes PTHR1
Tested Reactivity	Hu
Tested Application	IHC-P, WB
Host	Rabbit
Clonality	Polyclonal
Isotype	IgG
Target Name	PTHrP
Species	Human
Immunogen	Synthetic peptide corresponding to aa. 1268-1341 of Human Parathyroid Hormone Receptor 1.
Conjugation	Un-conjugated
Alternate Names	Parathyroid hormone/parathyroid hormone-related peptide receptor; PTH/PTHrP type I receptor; Parathyroid hormone 1 receptor; PTHR1; PTH/PTHr receptor; PFE; PTHR; PTH1 receptor

Application Instructions

Application table	Application	Dilution
	IHC-P	1:200 - 1:500
	WB	1:500 - 1:2000
Application Note	* The dilutions indicate recommended starting dilutions and the optimal dilutions or concentrations should be determined by the scientist.	
Observed Size	~ 66 kDa	

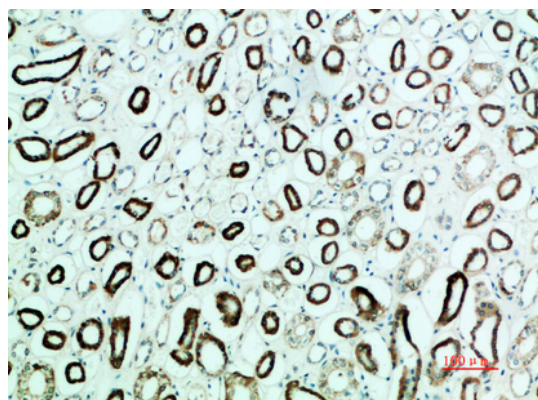
Properties

Form	Liquid
Purification	Affinity purification with immunogen.
Buffer	PBS (pH 7.4), 0.02% Sodium azide and 50% Glycerol.
Preservative	0.02% Sodium azide
Stabilizer	50% Glycerol
Concentration	1 mg/ml
Storage instruction	For continuous use, store undiluted antibody at 2-8°C for up to a week. For long-term storage, aliquot and store at -20°C. Storage in frost free freezers is not recommended. Avoid repeated freeze/thaw cycles. Suggest spin the vial prior to opening. The antibody solution should be gently mixed before use.
Note	For laboratory research only, not for drug, diagnostic or other use.

Bioinformation

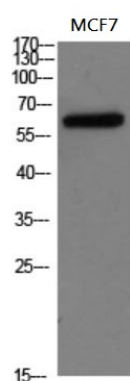
Gene Symbol	PTH1R
Gene Full Name	parathyroid hormone 1 receptor
Background	The protein encoded by this gene is a member of the G-protein coupled receptor family 2. This protein is a receptor for parathyroid hormone (PTH) and for parathyroid hormone-like hormone (PTHLH). The activity of this receptor is mediated by G proteins which activate adenylyl cyclase and also a phosphatidylinositol-calcium second messenger system. Defects in this receptor are known to be the cause of Jansen's metaphyseal chondrodysplasia (JMC), chondrodysplasia Blomstrand type (BOCD), as well as enchondromatosis. Two transcript variants encoding the same protein have been found for this gene. [provided by RefSeq, May 2010]
Function	This is a receptor for parathyroid hormone and for parathyroid hormone-related peptide. The activity of this receptor is mediated by G proteins which activate adenylyl cyclase and also a phosphatidylinositol-calcium second messenger system. [UniProt]
Calculated Mw	66 kDa

Images



ARG66392 anti-PTHR1 antibody IHC-P image

Immunohistochemistry: Paraffin-embedded Human kidney stained with ARG66392 anti-PTHR1 antibody at 1:200 dilution.



ARG66392 anti-PTHR1 antibody WB image

Western blot: MCF7 cell lysate stained with ARG66392 anti-PTHR1 antibody at 1:1000.