

## ARG66363 anti-MMP15 antibody

Package: 100 µl  
Store at: -20°C

### Summary

Product Description	Rabbit Polyclonal antibody recognizes MMP15
Tested Reactivity	Hu, Ms
Tested Application	WB
Host	Rabbit
Clonality	Polyclonal
Isotype	IgG
Target Name	MMP15
Species	Human
Immunogen	Fusion protein of Human MMP15.
Conjugation	Un-conjugated
Alternate Names	MT-MMP 2; Membrane-type matrix metalloproteinase 2; SMCP-2; MT2MMP; EC 3.4.24.-; Membrane-type-2 matrix metalloproteinase; MT2-MMP; MTMMP2; Matrix metalloproteinase-15; MMP-15

### Application Instructions

Application table	Application	Dilution
	WB	1:500 - 1:2000
Application Note	* The dilutions indicate recommended starting dilutions and the optimal dilutions or concentrations should be determined by the scientist.	
Positive Control	Mouse stomach, heart and liver tissue, HT-29 cells.	

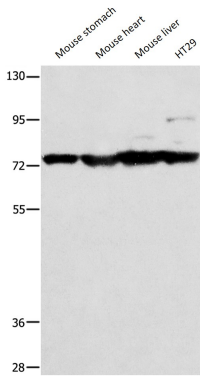
### Properties

Form	Liquid
Purification	Affinity purification with immunogen.
Buffer	PBS (pH 7.4), 0.05% Sodium azide and 40% Glycerol.
Preservative	0.05% Sodium azide
Stabilizer	40% Glycerol
Concentration	0.6 mg/ml
Storage instruction	For continuous use, store undiluted antibody at 2-8°C for up to a week. For long-term storage, aliquot and store at -20°C. Storage in frost free freezers is not recommended. Avoid repeated freeze/thaw cycles. Suggest spin the vial prior to opening. The antibody solution should be gently mixed before use.
Note	For laboratory research only, not for drug, diagnostic or other use.

Bioinformation

Gene Symbol	MMP15
Gene Full Name	matrix metalloproteinase 15 (membrane-inserted)
Background	Proteins of the matrix metalloproteinase (MMP) family are involved in the breakdown of extracellular matrix in normal physiological processes, such as embryonic development, reproduction, and tissue remodeling, as well as in disease processes, such as arthritis and metastasis. Most MMP's are secreted as inactive proproteins which are activated when cleaved by extracellular proteinases. However, the protein encoded by this gene is a member of the membrane-type MMP (MT-MMP) subfamily; each member of this subfamily contains a potential transmembrane domain suggesting that these proteins are expressed at the cell surface rather than secreted. [provided by RefSeq, Jul 2008]
Function	Endopeptidase that degrades various components of the extracellular matrix. May activate progelatinase A. [UniProt]
Calculated Mw	76 kDa
PTM	The precursor is cleaved by a furin endopeptidase. [UniProt]

Images



ARG66363 anti-MMP15 antibody WB image

Western blot: 40 µg of Mouse stomach, Mouse heart, Mouse liver and HT29 cell lysates stained with ARG66363 anti-MMP15 antibody at 1:200 dilution.