

**ARG66345**  
**anti-PSA antibody [SQab1895]**Package: 100 µl  
Store at: -20°C

### Summary

Product Description	Recombinant Rabbit Monoclonal antibody [SQab1895] recognizes PSA
Tested Reactivity	Hu
Tested Application	IHC-P
Host	Rabbit
Clonality	Monoclonal
Clone	SQab1895
Isotype	IgG
Target Name	PSA
Species	Human
Immunogen	Synthetic peptide within aa. 150-250 of Human PSA.
Conjugation	Un-conjugated
Alternate Names	Prostate-specific antigen; Gamma-seminoprotein; APS; PSA; EC 3.4.21.77; Kallikrein-3; P-30 antigen; Semenogelase; hK3; Semin; KLK2A1

### Application Instructions

Application table	Application	Dilution
	IHC-P	1:100 - 1:200
Application Note	IHC-P: Antigen Retrieval: Heat mediated was performed using Tris/EDTA buffer (pH 9.0), primary antibody incubate at RT for 30 min. * The dilutions indicate recommended starting dilutions and the optimal dilutions or concentrations should be determined by the scientist.	

### Properties

Form	Liquid
Purification	Purification with Protein A.
Buffer	PBS, 0.01% Sodium azide, 40% Glycerol and 0.05% BSA.
Preservative	0.01% Sodium azide
Stabilizer	40% Glycerol and 0.05% BSA
Storage instruction	For continuous use, store undiluted antibody at 2-8°C for up to a week. For long-term storage, aliquot and store at -20°C. Storage in frost free freezers is not recommended. Avoid repeated freeze/thaw cycles. Suggest spin the vial prior to opening. The antibody solution should be gently mixed before use.
Note	For laboratory research only, not for drug, diagnostic or other use.

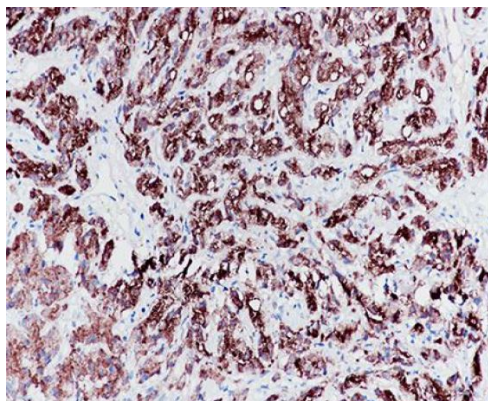
## Bioinformation

---

Gene Symbol	KLK3
Gene Full Name	kallikrein-related peptidase 3
Background	<p>Kallikreins are a subgroup of serine proteases having diverse physiological functions. Growing evidence suggests that many kallikreins are implicated in carcinogenesis and some have potential as novel cancer and other disease biomarkers. This gene is one of the fifteen kallikrein subfamily members located in a cluster on chromosome 19. Its protein product is a protease present in seminal plasma. It is thought to function normally in the liquefaction of seminal coagulum, presumably by hydrolysis of the high molecular mass seminal vesicle protein. Serum level of this protein, called PSA in the clinical setting, is useful in the diagnosis and monitoring of prostatic carcinoma. Alternate splicing of this gene generates several transcript variants encoding different isoforms. [provided by RefSeq, Jul 2008]</p>
Function	Hydrolyzes semenogelin-1 thus leading to the liquefaction of the seminal coagulum. [UniProt]
Highlight	<p>Related products: <a href="#">PSA antibodies</a>; <a href="#">PSA ELISA Kits</a>; <a href="#">PSA Duos / Panels</a>; <a href="#">Anti-Rabbit IgG secondary antibodies</a>; Related news: <a href="#">Cancer Pathology Markers (SQ clones)</a></p>
Calculated Mw	29 kDa

## Images

---



ARG66345 anti-PSA antibody [SQab1895] IHC-P image

Immunohistochemistry: Formalin-fixed and paraffin-embedded prostate cancer tissue stained with ARG66345 anti-PSA antibody [SQab1895]. Antigen Retrieval: Heat mediated was performed using Tris/EDTA buffer (pH 9.0).