

## ARG66285 anti-IL1 beta antibody [SQab1748]

Package: 100 µg  
Store at: -20°C

### Summary

Product Description	Mouse Monoclonal antibody [SQab1748] recognizes IL1 beta
Tested Reactivity	Hu, Ms
Tested Application	ELISA, FACS, ICC/IF, IHC-P, WB
Specificity	Not cross-react with recombinant human IL-1 alpha in ELISA (5 µg/ml protein) and WB (100 ng protein).
Host	Mouse
Clonality	Monoclonal
Clone	SQab1748
Isotype	IgG2a
Target Name	IL1 beta
Species	Human
Immunogen	Recombinant Human IL1 beta protein.
Conjugation	Un-conjugated
Alternate Names	Interleukin-1 beta; IL1-BETA; IL-1; IL-1 beta; Catabolin; IL1F2

### Application Instructions

Application table	Application	Dilution
	ELISA	1:3000 - 1:10000
	FACS	1:400 - 1:1000
	ICC/IF	1:400 - 1:1000
	IHC-P	Assay-dependent
	WB	1:2500 - 1:10000

**Application Note** \* The dilutions indicate recommended starting dilutions and the optimal dilutions or concentrations should be determined by the scientist.

### Properties

Form	Liquid
Buffer	PBS (pH 7.4) and 0.01% Thimerosal.
Preservative	0.01% Thimerosal
Concentration	1 mg/ml
Storage instruction	For continuous use, store undiluted antibody at 2-8°C for up to a week. For long-term storage, aliquot and store at -20°C or below. Storage in frost free freezers is not recommended. Avoid repeated freeze/thaw cycles. Suggest spin the vial prior to opening. The antibody solution should be gently mixed

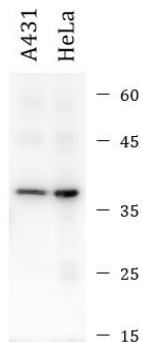
before use.

Note For laboratory research only, not for drug, diagnostic or other use.

## Bioinformation

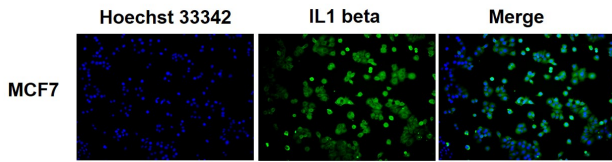
Gene Symbol	IL1B
Gene Full Name	interleukin 1, beta
Background	IL1 beta protein is a member of the interleukin 1 cytokine family. This cytokine is produced by activated macrophages as a proprotein, which is proteolytically processed to its active form by caspase 1 (CASP1/ICE). This cytokine is an important mediator of the inflammatory response, and is involved in a variety of cellular activities, including cell proliferation, differentiation, and apoptosis. The induction of cyclooxygenase-2 (PTGS2/COX2) by this cytokine in the central nervous system (CNS) is found to contribute to inflammatory pain hypersensitivity. This gene and eight other interleukin 1 family genes form a cytokine gene cluster on chromosome 2. [provided by RefSeq, Jul 2008]
Function	IL1 beta is a potent proinflammatory cytokine. Initially discovered as the major endogenous pyrogen, induces prostaglandin synthesis, neutrophil influx and activation, T-cell activation and cytokine production, B-cell activation and antibody production, and fibroblast proliferation and collagen production. Promotes Th17 differentiation of T-cells. Synergizes with IL12/interleukin-12 to induce IFNG synthesis from T-helper 1 (Th1) cells (PubMed:10653850). [UniProt]
Highlight	Related Antibody Duos and Panels: <a href="#">ARG30330 Pyroptosis Antibody Panel</a> Related products: <a href="#">IL1 beta antibodies</a> ; <a href="#">IL1 beta ELISA Kits</a> ; <a href="#">IL1 beta Duos / Panels</a> ; <a href="#">IL1 beta recombinant proteins</a> ; <a href="#">Anti-Mouse IgG secondary antibodies</a> ; Related news: <a href="#">HMGB1 in inflammation</a> <a href="#">Inflammatory Cytokines</a> <a href="#">Exploring Antiviral Immune Response</a> <a href="#">RIP1 activation and pathogenesis of NASH</a>
Research Area	Pyroptosis Study antibody
Calculated Mw	31 kDa
PTM	Activation of the IL1B precursor involves a CASP1-catalyzed proteolytic cleavage. Processing and secretion are temporarily associated. [UniProt]

## Images



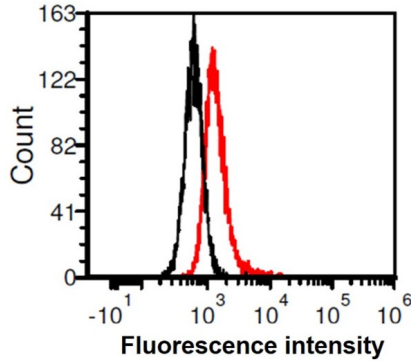
ARG66285 anti-IL1 beta antibody [SQab1748] WB image

Western blot: 20 µg of A431 and HeLa cell lysates stained with ARG66285 anti-IL1 beta antibody [SQab1748] at 1:4000 dilution.



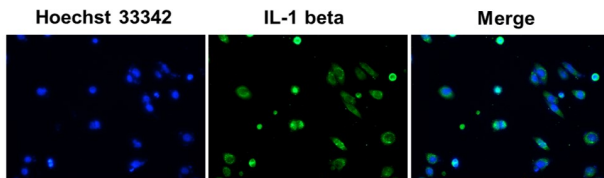
ARG66285 anti-IL1 beta antibody [SQab1748] ICC/IF image

Immunofluorescence: MCF7 cells stained with ARG66285 anti-IL1 beta antibody [SQab1748] at 1:200 dilution.



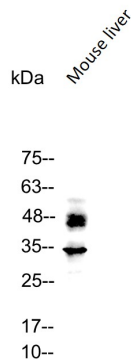
ARG66285 anti-IL1 beta antibody [SQab1748] FACS image

Flow Cytometry: HeLa cells stained with ARG66285 anti-IL1 beta antibody [SQab1748] at 1 µg/ml (red) and without antibody control (black).



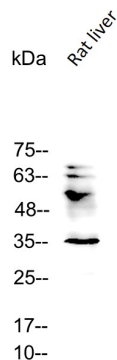
ARG66285 anti-IL1 beta antibody [SQab1748] ICC/IF image

Immunofluorescence: HeLa cells were fixed in 4% PFA, permeabilized with PBS containing 0.1% Triton X-100. Cells were stained with ARG66285 anti-IL1 beta antibody [SQab1748] (green) at 1:200 dilution, and cell nuclei were stained with Hoechst 33342 (blue).



ARG66285 anti-IL1 beta antibody [SQab1748] WB image

Western blot: 50 µg of Mouse liver lysate stained with ARG66285 anti-IL1 beta antibody [SQab1748] at 1:5000 dilution.



ARG66285 anti-IL1 beta antibody [SQab1748] WB image

Western blot: 50 µg of Rat liver lysate stained with ARG66285 anti-IL1 beta antibody [SQab1748] at 1:5000 dilution.