

## ARG66250 anti-DOG1 antibody [SQab1739]

Package: 100 µl, 50 µl  
Store at: -20°C

### Summary

Product Description	Recombinant Rabbit Monoclonal antibody [SQab1739] recognizes DOG1
Tested Reactivity	Hu
Tested Application	IHC-P
Host	Rabbit
Clonality	Monoclonal
Clone	SQab1739
Isotype	IgG
Target Name	DOG1
Species	Human
Immunogen	Synthetic peptide around the C-terminus of Human DOG-1.
Conjugation	Un-conjugated
Alternate Names	TMEM16A; ORAOV2; Transmembrane protein 16A; Discovered on gastrointestinal stromal tumors protein 1; TAOS2; Tumor-amplified and overexpressed sequence 2; Anoctamin-1; Oral cancer overexpressed protein 2; DOG1

### Application Instructions

Application table	<table> <tr> <th>Application</th><th>Dilution</th></tr> <tr> <td>IHC-P</td><td>1:100 - 1:200</td></tr> </table>	Application	Dilution	IHC-P	1:100 - 1:200
Application	Dilution				
IHC-P	1:100 - 1:200				
Application Note	<p>IHC-P: Antigen Retrieval: Boil tissue section in Tris/EDTA buffer (pH 9.0).</p> <p>* The dilutions indicate recommended starting dilutions and the optimal dilutions or concentrations should be determined by the scientist.</p>				

### Properties

Form	Liquid
Purification	Purification with Protein A.
Buffer	PBS, 0.01% Sodium azide, 40% Glycerol and 0.05% BSA.
Preservative	0.01% Sodium azide
Stabilizer	40% Glycerol and 0.05% BSA
Storage instruction	For continuous use, store undiluted antibody at 2-8°C for up to a week. For long-term storage, aliquot and store at -20°C. Storage in frost free freezers is not recommended. Avoid repeated freeze/thaw cycles. Suggest spin the vial prior to opening. The antibody solution should be gently mixed before use.
Note	For laboratory research only, not for drug, diagnostic or other use.

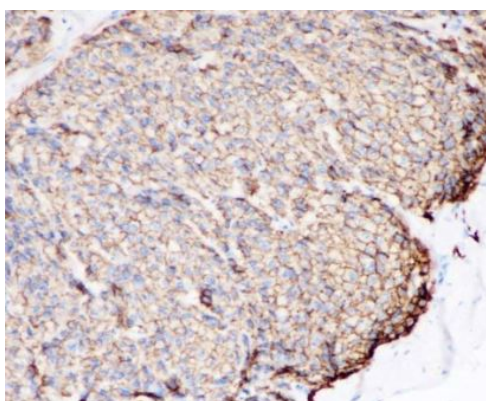
## Bioinformation

---

Gene Symbol	ANO1
Gene Full Name	anoctamin 1, calcium activated chloride channel
Function	Calcium-activated chloride channel (CaCC) which plays a role in transepithelial anion transport and smooth muscle contraction. Required for the normal functioning of the interstitial cells of Cajal (ICCs) which generate electrical pacemaker activity in gastrointestinal smooth muscles. Acts as a major contributor to basal and stimulated chloride conductance in airway epithelial cells and plays an important role in tracheal cartilage development. [UniProt]
Highlight	Related products: <a href="#">Anti-Rabbit IgG secondary antibodies;</a> Related news: <a href="#">Cancer Pathology Markers (SQ clones)</a>
Calculated Mw	114 kDa

## Images

---



ARG66250 anti-DOG1 antibody [SQab1739] IHC-P image

Immunohistochemistry: Formalin-fixed and paraffin-embedded Human GIST tissue stained with ARG66250 anti-DOG1 antibody [SQab1739] at 1:200. Antigen Retrieval: Boil tissue section in Tris/EDTA buffer (pH 9.0).