

ARG66235 anti-GABAA Receptor beta 1 antibody

Package: 100 µg
Store at: -20°C

Summary

| | |
|---------------------|---|
| Product Description | Rabbit Polyclonal antibody recognizes GABAA Receptor beta 1 |
| Tested Reactivity | Hu, Ms, Rat |
| Tested Application | IHC-P |
| Specificity | This antibody detects endogenous levels of GABAA Receptor beta 1 protein. |
| Host | Rabbit |
| Clonality | Polyclonal |
| Isotype | IgG |
| Target Name | GABAA Receptor beta 1 |
| Species | Human |
| Immunogen | Synthetic peptide around Ser434 of Human GABAA Receptor beta 1. |
| Conjugation | Un-conjugated |
| Alternate Names | A; Gamma-aminobutyric acid receptor subunit beta-1; GABA |

Application Instructions

| | | |
|-------------------|--|---------------|
| Application table | Application | Dilution |
| | IHC-P | 1:100 - 1:300 |
| Application Note | * The dilutions indicate recommended starting dilutions and the optimal dilutions or concentrations should be determined by the scientist. | |
| Observed Size | 55 kDa | |

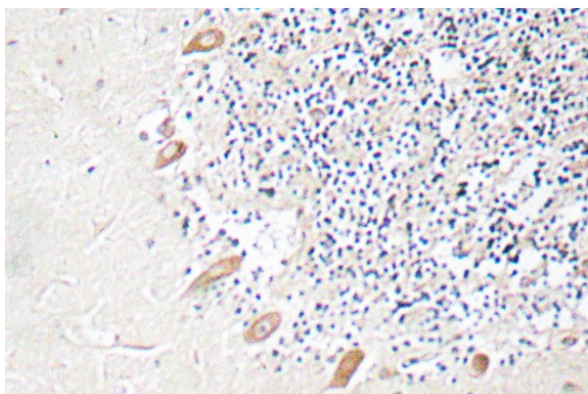
Properties

| | |
|---------------------|---|
| Form | Liquid |
| Purification | Affinity purification with immunogen. |
| Buffer | PBS, 0.02% Sodium azide, 50% Glycerol and 0.5% BSA. |
| Preservative | 0.02% Sodium azide |
| Stabilizer | 50% Glycerol and 0.5% BSA |
| Concentration | 1 mg/ml |
| Storage instruction | For continuous use, store undiluted antibody at 2-8°C for up to a week. For long-term storage, aliquot and store at -20°C. Storage in frost free freezers is not recommended. Avoid repeated freeze/thaw cycles. Suggest spin the vial prior to opening. The antibody solution should be gently mixed before use. |
| Note | For laboratory research only, not for drug, diagnostic or other use. |

Bioinformation

| | |
|----------------|--|
| Gene Symbol | GABRB1 |
| Gene Full Name | gamma-aminobutyric acid (GABA) A receptor, beta 1 |
| Background | The gamma-aminobutyric acid (GABA) A receptor is a multisubunit chloride channel that mediates the fastest inhibitory synaptic transmission in the central nervous system. This gene encodes GABA A receptor, beta 1 subunit. It is mapped to chromosome 4p12 in a cluster comprised of genes encoding alpha 4, alpha 2 and gamma 1 subunits of the GABA A receptor. Alteration of this gene is implicated in the pathogenetics of schizophrenia. [provided by RefSeq, Jul 2008] |
| Function | Component of the heteropentameric receptor for GABA, the major inhibitory neurotransmitter in the vertebrate brain. Functions also as histamine receptor and mediates cellular responses to histamine. Functions as receptor for diazepines and various anesthetics, such as pentobarbital; these are bound at a separate allosteric effector binding site. Functions as ligand-gated chloride channel (By similarity). [UniProt] |
| Calculated Mw | 54 kDa |

Images



ARG66235 anti-GABAA Receptor beta 1 antibody IHC-P image

Immunohistochemistry: Human brain tissue stained with ARG66235 anti-GABAA Receptor beta 1 antibody.