

## ARG66188 anti-MIF antibody

Package: 100 µg  
Store at: -20°C

### Summary

Product Description	Rabbit Polyclonal antibody recognizes MIF
Tested Reactivity	Hu, Ms, Rat
Tested Application	IHC-P, WB
Specificity	The antibody detects endogenous MIF protein.
Host	Rabbit
Clonality	Polyclonal
Isotype	IgG
Target Name	MIF
Species	Human
Immunogen	Synthetic peptide around the Internal region of Human MIF.
Conjugation	Un-conjugated
Alternate Names	Phenylpyruvate tautomerase; L-dopachrome tautomerase; GLIF; L-dopachrome isomerase; MMIF; Macrophage migration inhibitory factor; MIF; GIF; EC 5.3.2.1; Glycosylation-inhibiting factor; EC 5.3.3.12

### Application Instructions

Application table	Application	Dilution
	IHC-P	1:50 - 1:300
	WB	1:500 - 1:2000
Application Note	IHC-P: Antigen Retrieval: Boil tissue section in Sodium citrate buffer (pH 6.0) for 20 min. * The dilutions indicate recommended starting dilutions and the optimal dilutions or concentrations should be determined by the scientist.	

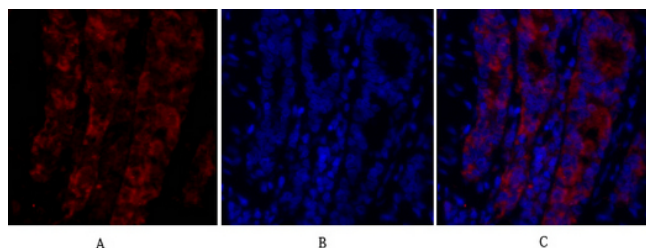
### Properties

Form	Liquid
Purification	Affinity purification with immunogen.
Buffer	PBS, 0.02% Sodium azide, 50% Glycerol and 0.5% BSA.
Preservative	0.02% Sodium azide
Stabilizer	50% Glycerol and 0.5% BSA
Concentration	1 mg/ml
Storage instruction	For continuous use, store undiluted antibody at 2-8°C for up to a week. For long-term storage, aliquot and store at -20°C. Storage in frost free freezers is not recommended. Avoid repeated freeze/thaw cycles. Suggest spin the vial prior to opening. The antibody solution should be gently mixed before use.

## Bioinformation

Gene Symbol	MIF
Gene Full Name	macrophage migration inhibitory factor (glycosylation-inhibiting factor)
Background	This gene encodes a lymphokine involved in cell-mediated immunity, immunoregulation, and inflammation. It plays a role in the regulation of macrophage function in host defense through the suppression of anti-inflammatory effects of glucocorticoids. This lymphokine and the JAB1 protein form a complex in the cytosol near the peripheral plasma membrane, which may indicate an additional role in integrin signaling pathways. [provided by RefSeq, Jul 2008]
Function	Pro-inflammatory cytokine. Involved in the innate immune response to bacterial pathogens. The expression of MIF at sites of inflammation suggests a role as mediator in regulating the function of macrophages in host defense. Counteracts the anti-inflammatory activity of glucocorticoids. Has phenylpyruvate tautomerase and dopachrome tautomerase activity (in vitro), but the physiological substrate is not known. It is not clear whether the tautomerase activity has any physiological relevance, and whether it is important for cytokine activity. [UniProt]
Calculated Mw	12 kDa

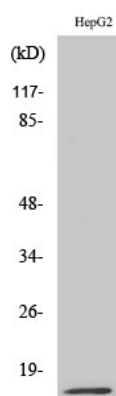
## Images



ARG66188 anti-MIF antibody IHC image

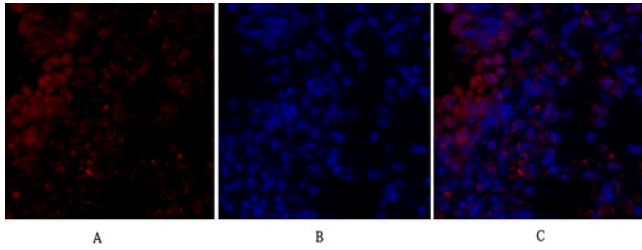
Immunohistochemistry: Rat lung tissue stained with ARG66188 anti-MIF antibody (red) at 1:200 dilution (4°C, overnight).

Picture A: Target. Picture B: DAPI. Picture C: merge of A+B.



ARG66188 anti-MIF antibody WB image

Western blot: HepG2 cell lysate stained with ARG66188 anti-MIF antibody at 1:500 dilution.

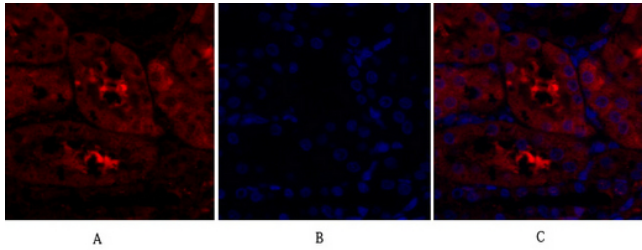


#### ARG66188 anti-MIF antibody IHC image

Immunohistochemistry: Rat lung tissue stained with ARG66188 anti-MIF antibody (red) at 1:200 dilution (4°C, overnight).

Picture A: Target. Picture B: DAPI. Picture C: merge of A+B.

---

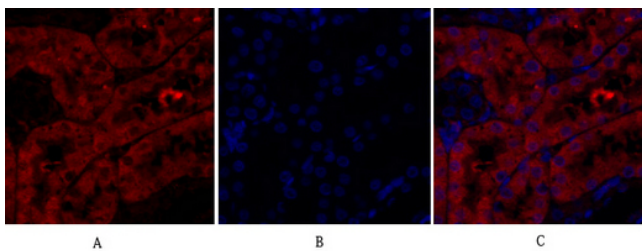


#### ARG66188 anti-MIF antibody IHC image

Immunohistochemistry: Rat kidney tissue stained with ARG66188 anti-MIF antibody (red) at 1:200 dilution (4°C, overnight).

Picture A: Target. Picture B: DAPI. Picture C: merge of A+B.

---

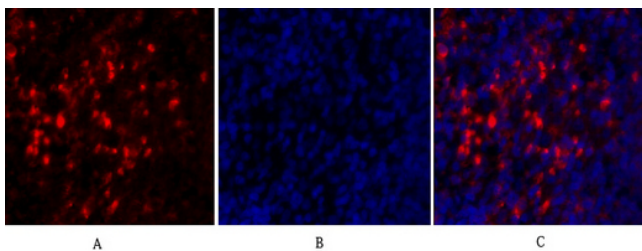


#### ARG66188 anti-MIF antibody IHC image

Immunohistochemistry: Rat kidney tissue stained with ARG66188 anti-MIF antibody (red) at 1:200 dilution (4°C, overnight).

Picture A: Target. Picture B: DAPI. Picture C: merge of A+B.

---

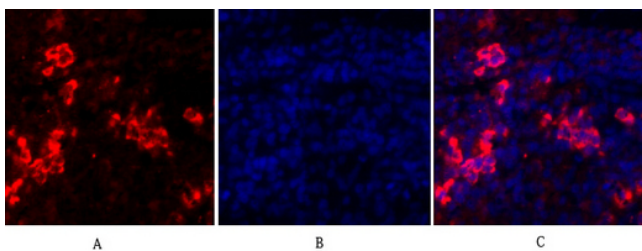


#### ARG66188 anti-MIF antibody IHC image

Immunohistochemistry: Rat spleen tissue stained with ARG66188 anti-MIF antibody (red) at 1:200 dilution (4°C, overnight).

Picture A: Target. Picture B: DAPI. Picture C: merge of A+B.

---

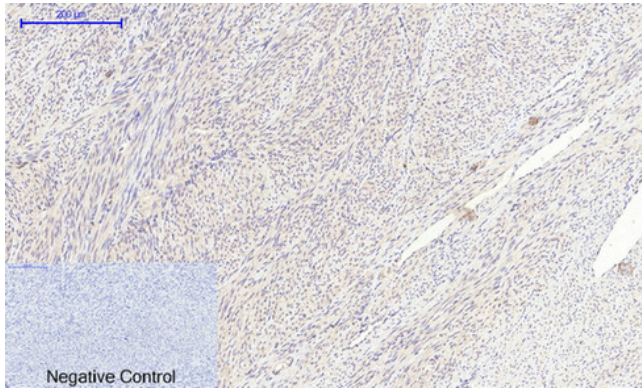


#### ARG66188 anti-MIF antibody IHC image

Immunohistochemistry: Rat spleen tissue stained with ARG66188 anti-MIF antibody (red) at 1:200 dilution (4°C, overnight).

Picture A: Target. Picture B: DAPI. Picture C: merge of A+B.

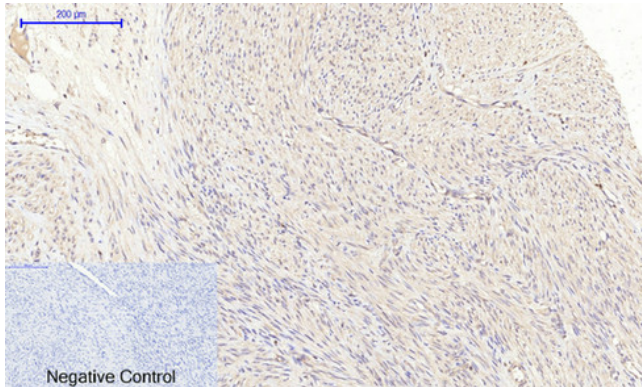
---



#### ARG66188 anti-MIF antibody IHC-P image

Immunohistochemistry: Paraffin-embedded Human uterus tissue stained with ARG66188 anti-MIF antibody at 1:200 dilution (4°C, overnight). Antigen Retrieval: Boil tissue section in Sodium citrate buffer (pH 6.0) for 20 min.

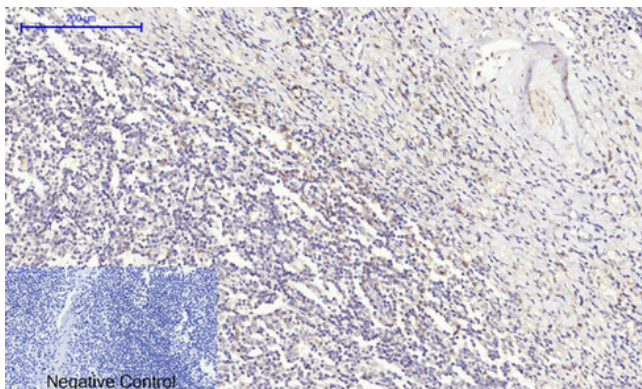
Negative control was used by secondary antibody only.



#### ARG66188 anti-MIF antibody IHC-P image

Immunohistochemistry: Paraffin-embedded Human uterus cancer tissue stained with ARG66188 anti-MIF antibody at 1:200 dilution (4°C, overnight). Antigen Retrieval: Boil tissue section in Sodium citrate buffer (pH 6.0) for 20 min.

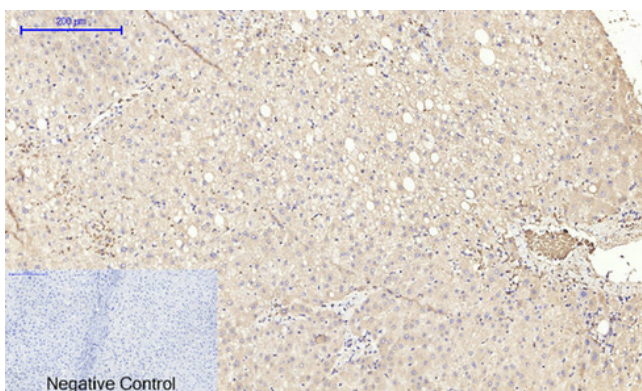
Negative control was used by secondary antibody only.



#### ARG66188 anti-MIF antibody IHC-P image

Immunohistochemistry: Paraffin-embedded Human Tonsil tissue stained with ARG66188 anti-MIF antibody at 1:200 dilution (4°C, overnight). Antigen Retrieval: Boil tissue section in Sodium citrate buffer (pH 6.0) for 20 min.

Negative control was used by secondary antibody only.

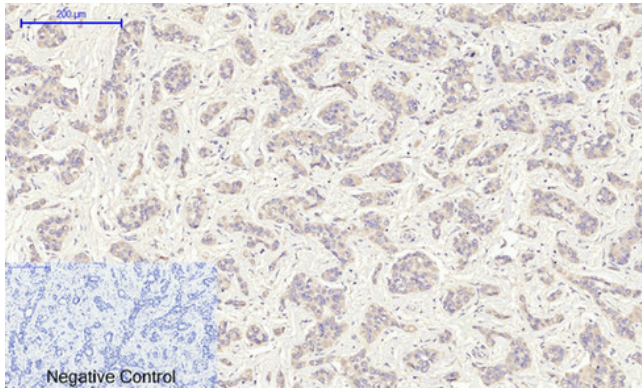


#### ARG66188 anti-MIF antibody IHC-P image

Immunohistochemistry: Paraffin-embedded Human liver tissue stained with ARG66188 anti-MIF antibody at 1:200 dilution (4°C, overnight). Antigen Retrieval: Boil tissue section in Sodium citrate buffer (pH 6.0) for 20 min.

Negative control was used by secondary antibody only.

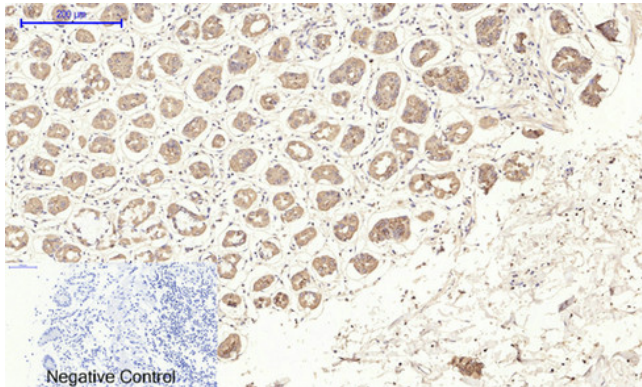




#### ARG66188 anti-MIF antibody IHC-P image

Immunohistochemistry: Paraffin-embedded Human liver cancer tissue stained with ARG66188 anti-MIF antibody at 1:200 dilution (4°C, overnight). Antigen Retrieval: Boil tissue section in Sodium citrate buffer (pH 6.0) for 20 min.

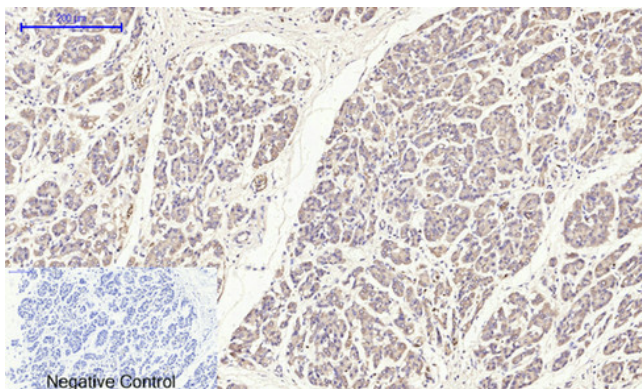
Negative control was used by secondary antibody only.



#### ARG66188 anti-MIF antibody IHC-P image

Immunohistochemistry: Paraffin-embedded Human stomach tissue stained with ARG66188 anti-MIF antibody at 1:200 dilution (4°C, overnight). Antigen Retrieval: Boil tissue section in Sodium citrate buffer (pH 6.0) for 20 min.

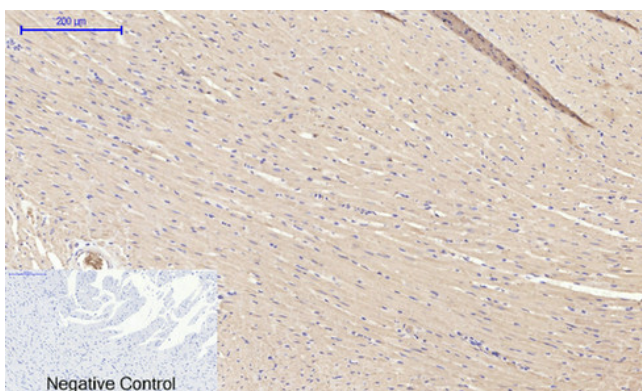
Negative control was used by secondary antibody only.



#### ARG66188 anti-MIF antibody IHC-P image

Immunohistochemistry: Paraffin-embedded Human stomach cancer tissue stained with ARG66188 anti-MIF antibody at 1:200 dilution (4°C, overnight). Antigen Retrieval: Boil tissue section in Sodium citrate buffer (pH 6.0) for 20 min.

Negative control was used by secondary antibody only.

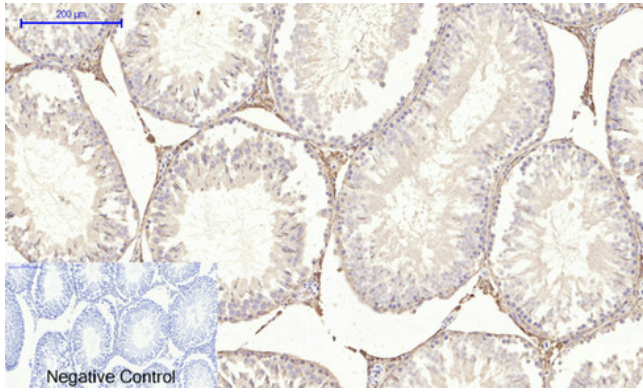


#### ARG66188 anti-MIF antibody IHC-P image

Immunohistochemistry: Paraffin-embedded Rat heart tissue stained with ARG66188 anti-MIF antibody at 1:200 dilution (4°C, overnight). Antigen Retrieval: Boil tissue section in Sodium citrate buffer (pH 6.0) for 20 min.

Negative control was used by secondary antibody only.

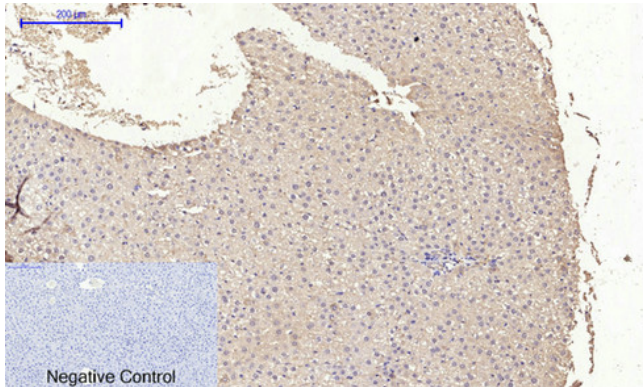




#### ARG66188 anti-MIF antibody IHC-P image

Immunohistochemistry: Paraffin-embedded Rat testis tissue stained with ARG66188 anti-MIF antibody at 1:200 dilution (4°C, overnight). Antigen Retrieval: Boil tissue section in Sodium citrate buffer (pH 6.0) for 20 min.

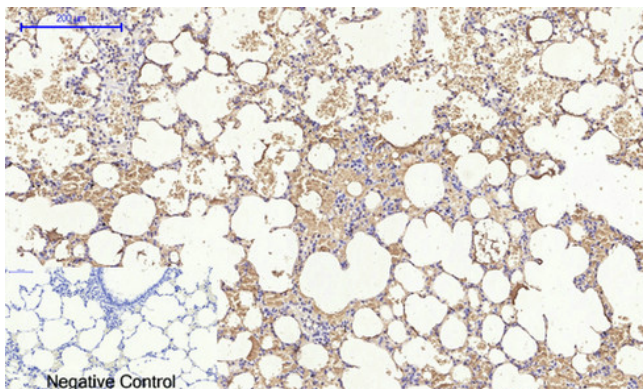
Negative control was used by secondary antibody only.



#### ARG66188 anti-MIF antibody IHC-P image

Immunohistochemistry: Paraffin-embedded Rat liver tissue stained with ARG66188 anti-MIF antibody at 1:200 dilution (4°C, overnight). Antigen Retrieval: Boil tissue section in Sodium citrate buffer (pH 6.0) for 20 min.

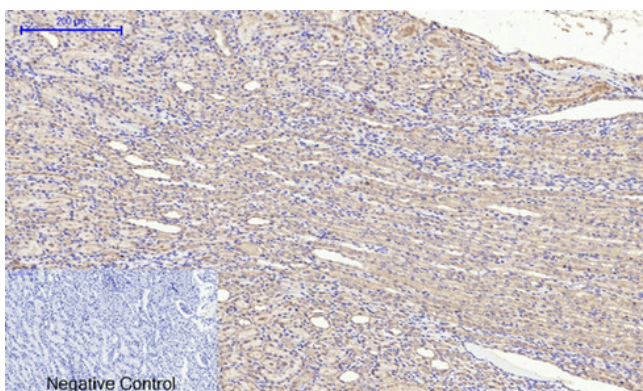
Negative control was used by secondary antibody only.



#### ARG66188 anti-MIF antibody IHC-P image

Immunohistochemistry: Paraffin-embedded Rat lung tissue stained with ARG66188 anti-MIF antibody at 1:200 dilution (4°C, overnight). Antigen Retrieval: Boil tissue section in Sodium citrate buffer (pH 6.0) for 20 min.

Negative control was used by secondary antibody only.

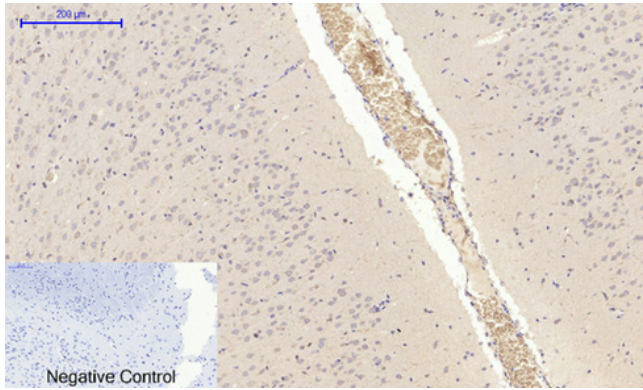


#### ARG66188 anti-MIF antibody IHC-P image

Immunohistochemistry: Paraffin-embedded Rat kidney tissue stained with ARG66188 anti-MIF antibody at 1:200 dilution (4°C, overnight). Antigen Retrieval: Boil tissue section in Sodium citrate buffer (pH 6.0) for 20 min.

Negative control was used by secondary antibody only.

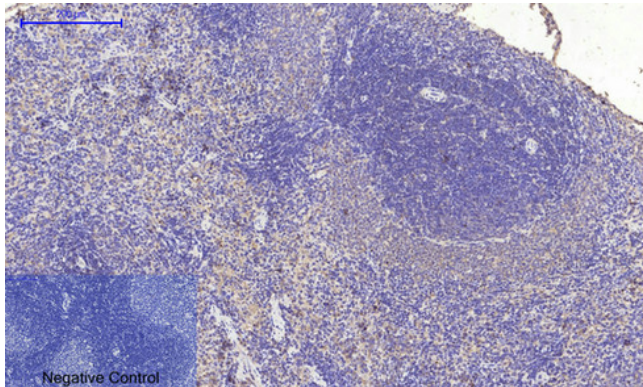




#### ARG66188 anti-MIF antibody IHC-P image

Immunohistochemistry: Paraffin-embedded Rat brain tissue stained with ARG66188 anti-MIF antibody at 1:200 dilution (4°C, overnight). Antigen Retrieval: Boil tissue section in Sodium citrate buffer (pH 6.0) for 20 min.

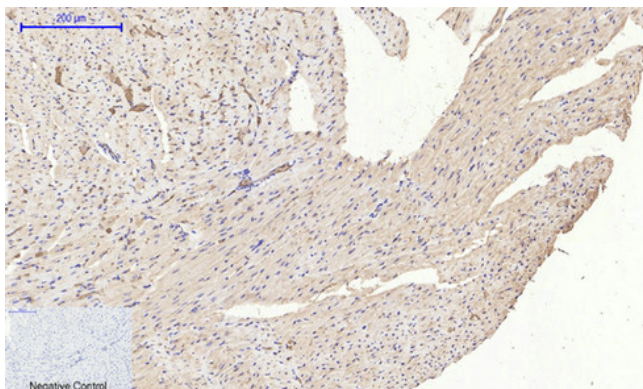
Negative control was used by secondary antibody only.



#### ARG66188 anti-MIF antibody IHC-P image

Immunohistochemistry: Paraffin-embedded Rat spleen tissue stained with ARG66188 anti-MIF antibody at 1:200 dilution (4°C, overnight). Antigen Retrieval: Boil tissue section in Sodium citrate buffer (pH 6.0) for 20 min.

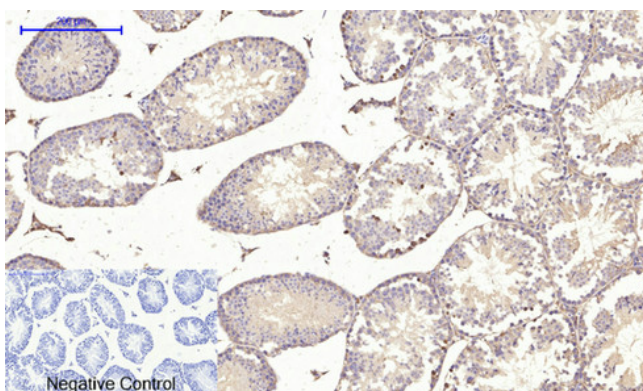
Negative control was used by secondary antibody only.



#### ARG66188 anti-MIF antibody IHC-P image

Immunohistochemistry: Paraffin-embedded Mouse heart tissue stained with ARG66188 anti-MIF antibody at 1:200 dilution (4°C, overnight). Antigen Retrieval: Boil tissue section in Sodium citrate buffer (pH 6.0) for 20 min.

Negative control was used by secondary antibody only.

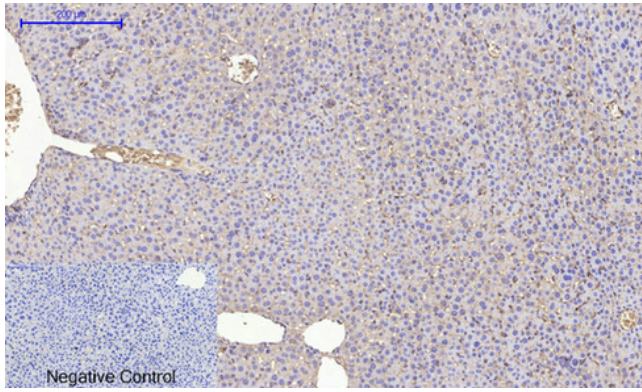


#### ARG66188 anti-MIF antibody IHC-P image

Immunohistochemistry: Paraffin-embedded Mouse testis tissue stained with ARG66188 anti-MIF antibody at 1:200 dilution (4°C, overnight). Antigen Retrieval: Boil tissue section in Sodium citrate buffer (pH 6.0) for 20 min.

Negative control was used by secondary antibody only.

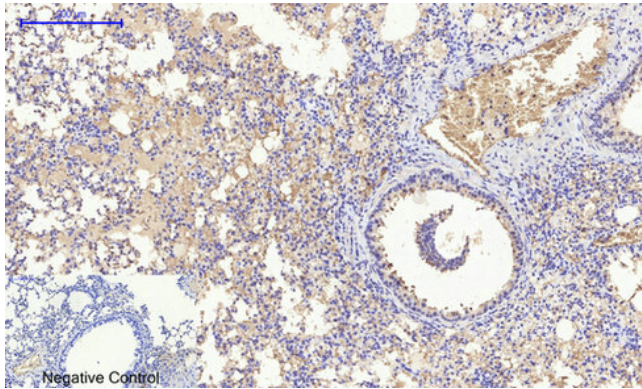




#### ARG66188 anti-MIF antibody IHC-P image

Immunohistochemistry: Paraffin-embedded Mouse liver tissue stained with ARG66188 anti-MIF antibody at 1:200 dilution (4°C, overnight). Antigen Retrieval: Boil tissue section in Sodium citrate buffer (pH 6.0) for 20 min.

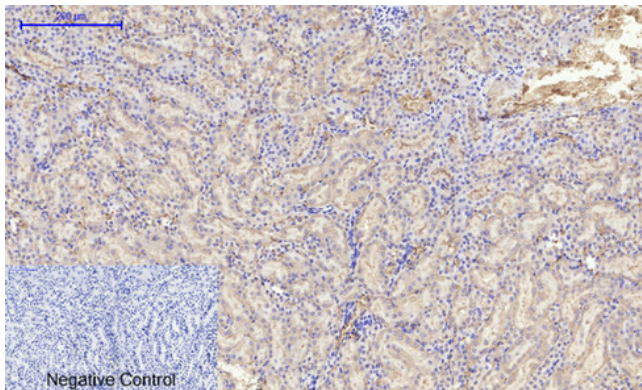
Negative control was used by secondary antibody only.



#### ARG66188 anti-MIF antibody IHC-P image

Immunohistochemistry: Paraffin-embedded Mouse lung tissue stained with ARG66188 anti-MIF antibody at 1:200 dilution (4°C, overnight). Antigen Retrieval: Boil tissue section in Sodium citrate buffer (pH 6.0) for 20 min.

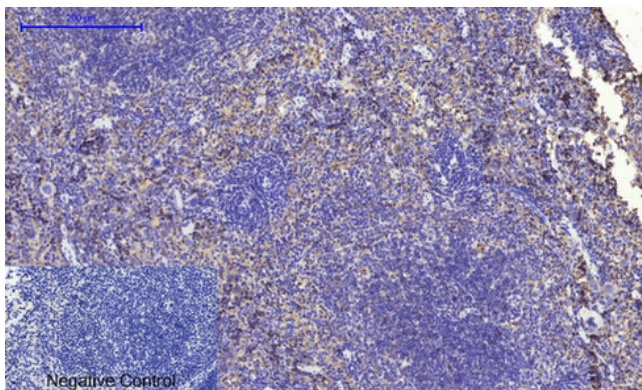
Negative control was used by secondary antibody only.



#### ARG66188 anti-MIF antibody IHC-P image

Immunohistochemistry: Paraffin-embedded Mouse kidney tissue stained with ARG66188 anti-MIF antibody at 1:200 dilution (4°C, overnight). Antigen Retrieval: Boil tissue section in Sodium citrate buffer (pH 6.0) for 20 min.

Negative control was used by secondary antibody only.



#### ARG66188 anti-MIF antibody IHC-P image

Immunohistochemistry: Paraffin-embedded Mouse spleen tissue stained with ARG66188 anti-MIF antibody at 1:200 dilution (4°C, overnight). Antigen Retrieval: Boil tissue section in Sodium citrate buffer (pH 6.0) for 20 min.

Negative control was used by secondary antibody only.