

ARG66171 anti-FH / Fumarase antibody

Package: 100 µg
Store at: -20°C

Summary

Product Description	Mouse Monoclonal antibody recognizes FH / Fumarase
Tested Reactivity	Hu, Ms, Rat
Tested Application	IHC-P, WB
Specificity	The antibody detects endogenous FH proteins.
Host	Mouse
Clonality	Monoclonal
Isotype	IgG
Target Name	FH / Fumarase
Species	Human
Immunogen	Synthetic peptide of Human FH / Fumarase.
Conjugation	Un-conjugated
Alternate Names	MCUL1; MCL; LRCC; EC 4.2.1.2; Fumarate hydratase, mitochondrial; FMRD; Fumarase; HLRCC

Application Instructions

Application table	Application	Dilution
	IHC-P	1:50 - 1:300
	WB	1:3000
Application Note	IHC-P: Antigen Retrieval: Boil tissue section in Sodium citrate buffer (pH 6.0) for 20 min. * The dilutions indicate recommended starting dilutions and the optimal dilutions or concentrations should be determined by the scientist.	

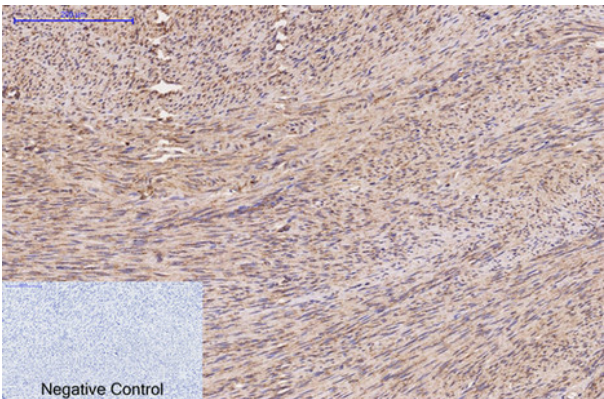
Properties

Form	Liquid
Purification	Affinity purification with immunogen.
Buffer	PBS (pH 7.4), 0.02% Sodium azide and 50% Glycerol.
Preservative	0.02% Sodium azide
Stabilizer	50% Glycerol
Concentration	1 mg/ml
Storage instruction	For continuous use, store undiluted antibody at 2-8°C for up to a week. For long-term storage, aliquot and store at -20°C. Storage in frost free freezers is not recommended. Avoid repeated freeze/thaw cycles. Suggest spin the vial prior to opening. The antibody solution should be gently mixed before use.
Note	For laboratory research only, not for drug, diagnostic or other use.

Bioinformation

Gene Symbol	FH
Gene Full Name	fumarate hydratase
Background	The protein encoded by this gene is an enzymatic component of the tricarboxylic acid (TCA) cycle, or Krebs cycle, and catalyzes the formation of L-malate from fumarate. It exists in both a cytosolic form and an N-terminal extended form, differing only in the translation start site used. The N-terminal extended form is targeted to the mitochondrion, where the removal of the extension generates the same form as in the cytoplasm. It is similar to some thermostable class II fumarases and functions as a homotetramer. Mutations in this gene can cause fumarase deficiency and lead to progressive encephalopathy. [provided by RefSeq, Jul 2008]
Function	Also acts as a tumor suppressor. [UniProt]
Highlight	Related products: Fumarase antibodies ; Fumarase ELISA Kits ; Anti-Mouse IgG secondary antibodies ; Related news: TCA intermediate fumarate promotes mitobiogenesis
Calculated Mw	55 kDa

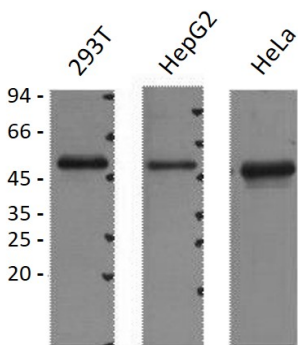
Images



ARG66171 anti-FH / Fumarase antibody IHC-P image

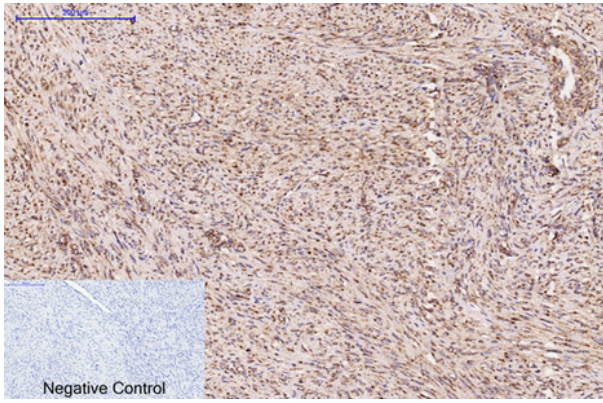
Immunohistochemistry: Paraffin-embedded Human uterus tissue stained with ARG66171 anti-FH / Fumarase antibody at 1:200 dilution (4°C, overnight). Antigen Retrieval: Boil tissue section in Sodium citrate buffer (pH 6.0) for 20 min.

Negative control was used by secondary antibody only.



ARG66171 anti-FH / Fumarase antibody WB image

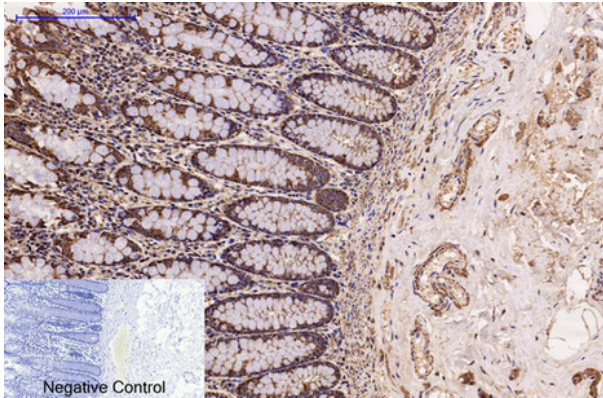
Western blot: 1) 293T, 2) HepG2, and 3) HeLa cell lysates stained with ARG66171 anti-FH / Fumarase antibody at 1:3000 dilution.



ARG66171 anti-FH / Fumarase antibody IHC-P image

Immunohistochemistry: Paraffin-embedded Human uterus cancer tissue stained with ARG66171 anti-FH / Fumarase antibody at 1:200 dilution (4°C, overnight). Antigen Retrieval: Boil tissue section in Sodium citrate buffer (pH 6.0) for 20 min.

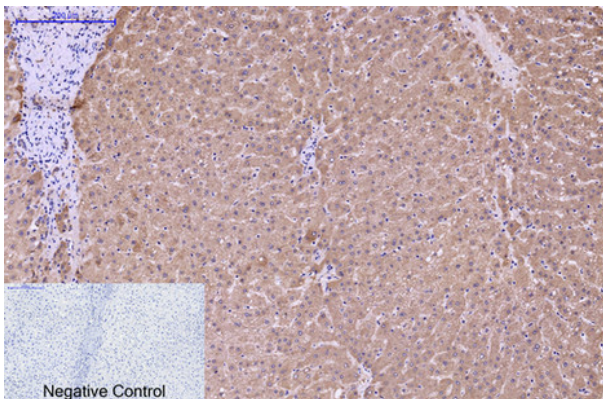
Negative control was used by secondary antibody only.



ARG66171 anti-FH / Fumarase antibody IHC-P image

Immunohistochemistry: Paraffin-embedded Human colon cancer tissue stained with ARG66171 anti-FH / Fumarase antibody at 1:200 dilution (4°C, overnight). Antigen Retrieval: Boil tissue section in Sodium citrate buffer (pH 6.0) for 20 min.

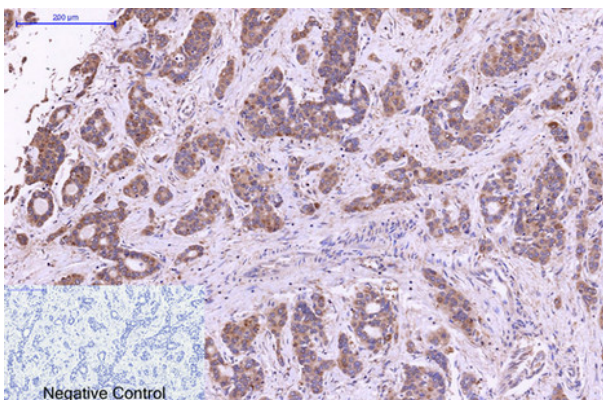
Negative control was used by secondary antibody only.



ARG66171 anti-FH / Fumarase antibody IHC-P image

Immunohistochemistry: Paraffin-embedded Human liver tissue stained with ARG66171 anti-FH / Fumarase antibody at 1:200 dilution (4°C, overnight). Antigen Retrieval: Boil tissue section in Sodium citrate buffer (pH 6.0) for 20 min.

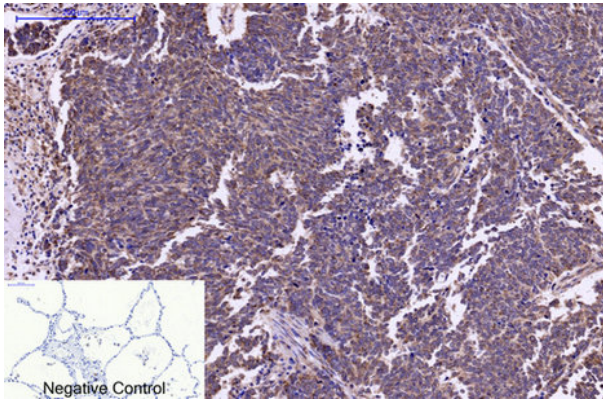
Negative control was used by secondary antibody only.



ARG66171 anti-FH / Fumarase antibody IHC-P image

Immunohistochemistry: Paraffin-embedded Human liver cancer tissue stained with ARG66171 anti-FH / Fumarase antibody at 1:200 dilution (4°C, overnight). Antigen Retrieval: Boil tissue section in Sodium citrate buffer (pH 6.0) for 20 min.

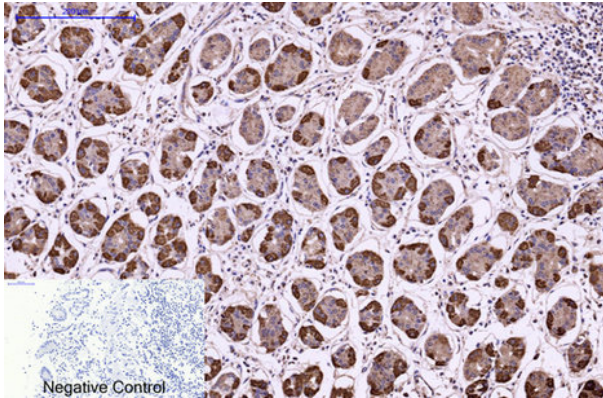
Negative control was used by secondary antibody only.



ARG66171 anti-FH / Fumarase antibody IHC-P image

Immunohistochemistry: Paraffin-embedded Human lung tissue stained with ARG66171 anti-FH / Fumarase antibody at 1:200 dilution (4°C, overnight). Antigen Retrieval: Boil tissue section in Sodium citrate buffer (pH 6.0) for 20 min.

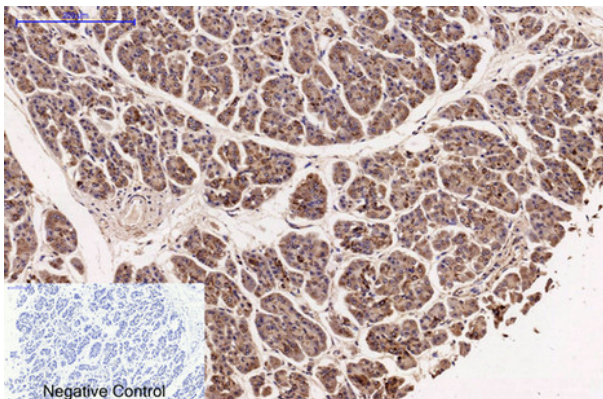
Negative control was used by secondary antibody only.



ARG66171 anti-FH / Fumarase antibody IHC-P image

Immunohistochemistry: Paraffin-embedded Human stomach tissue stained with ARG66171 anti-FH / Fumarase antibody at 1:200 dilution (4°C, overnight). Antigen Retrieval: Boil tissue section in Sodium citrate buffer (pH 6.0) for 20 min.

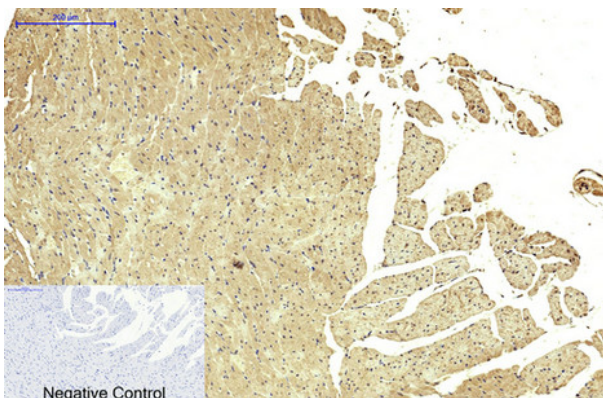
Negative control was used by secondary antibody only.



ARG66171 anti-FH / Fumarase antibody IHC-P image

Immunohistochemistry: Paraffin-embedded Human stomach cancer tissue stained with ARG66171 anti-FH / Fumarase antibody at 1:200 dilution (4°C, overnight). Antigen Retrieval: Boil tissue section in Sodium citrate buffer (pH 6.0) for 20 min.

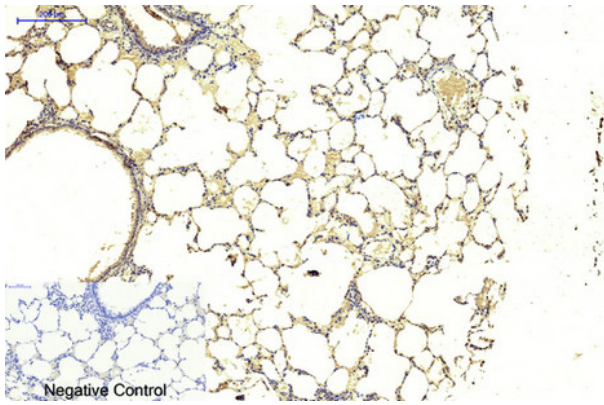
Negative control was used by secondary antibody only.



ARG66171 anti-FH / Fumarase antibody IHC-P image

Immunohistochemistry: Paraffin-embedded Rat heart tissue stained with ARG66171 anti-FH / Fumarase antibody at 1:200 dilution (4°C, overnight). Antigen Retrieval: Boil tissue section in Sodium citrate buffer (pH 6.0) for 20 min.

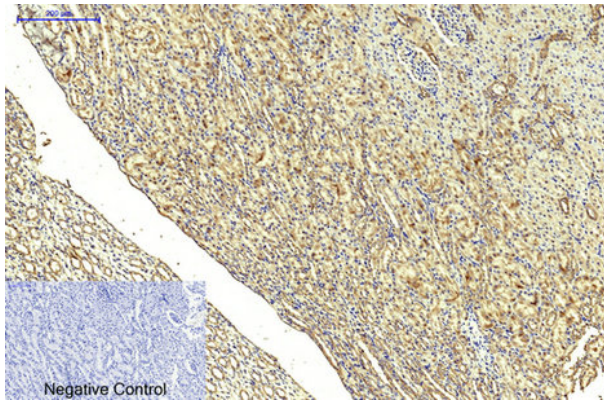
Negative control was used by secondary antibody only.



ARG66171 anti-FH / Fumarase antibody IHC-P image

Immunohistochemistry: Paraffin-embedded Rat lung tissue stained with ARG66171 anti-FH / Fumarase antibody at 1:200 dilution (4°C, overnight). Antigen Retrieval: Boil tissue section in Sodium citrate buffer (pH 6.0) for 20 min.

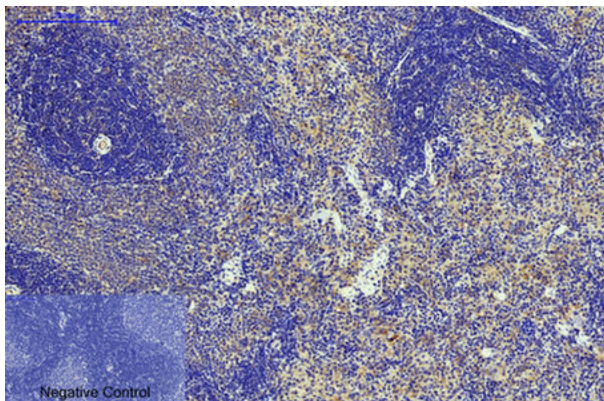
Negative control was used by secondary antibody only.



ARG66171 anti-FH / Fumarase antibody IHC-P image

Immunohistochemistry: Paraffin-embedded Rat kidney tissue stained with ARG66171 anti-FH / Fumarase antibody at 1:200 dilution (4°C, overnight). Antigen Retrieval: Boil tissue section in Sodium citrate buffer (pH 6.0) for 20 min.

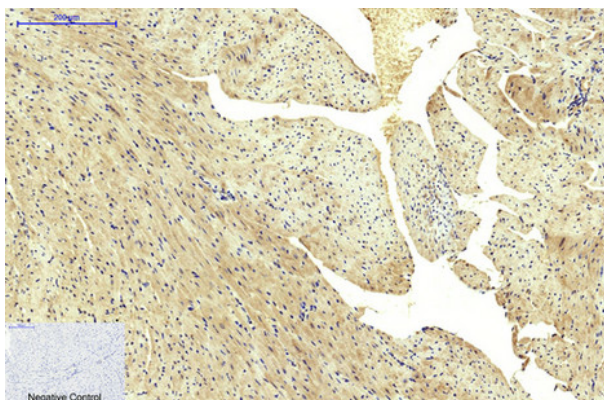
Negative control was used by secondary antibody only.



ARG66171 anti-FH / Fumarase antibody IHC-P image

Immunohistochemistry: Paraffin-embedded Rat spleen tissue stained with ARG66171 anti-FH / Fumarase antibody at 1:200 dilution (4°C, overnight). Antigen Retrieval: Boil tissue section in Sodium citrate buffer (pH 6.0) for 20 min.

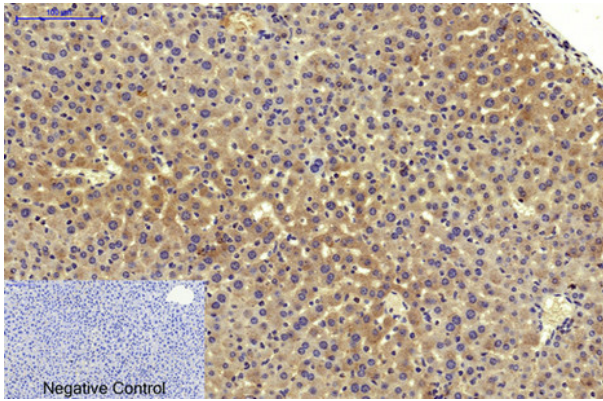
Negative control was used by secondary antibody only.



ARG66171 anti-FH / Fumarase antibody IHC-P image

Immunohistochemistry: Paraffin-embedded Mouse heart tissue stained with ARG66171 anti-FH / Fumarase antibody at 1:200 dilution (4°C, overnight). Antigen Retrieval: Boil tissue section in Sodium citrate buffer (pH 6.0) for 20 min.

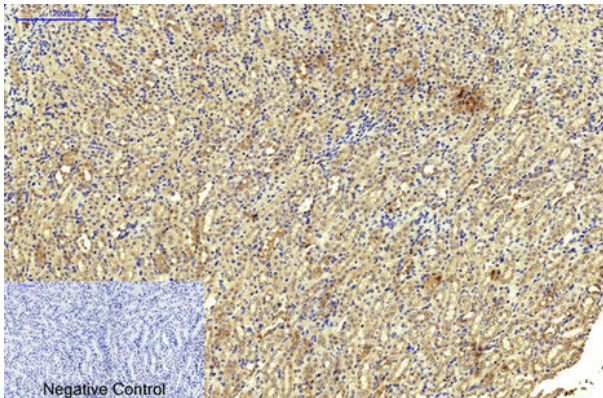
Negative control was used by secondary antibody only.



ARG66171 anti-FH / Fumarase antibody IHC-P image

Immunohistochemistry: Paraffin-embedded Mouse liver tissue stained with ARG66171 anti-FH / Fumarase antibody at 1:200 dilution (4°C, overnight). Antigen Retrieval: Boil tissue section in Sodium citrate buffer (pH 6.0) for 20 min.

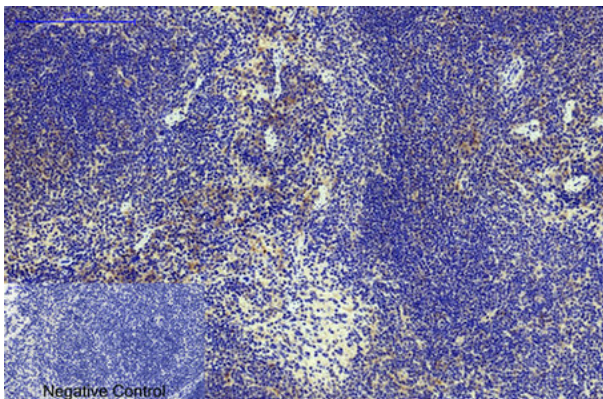
Negative control was used by secondary antibody only.



ARG66171 anti-FH / Fumarase antibody IHC-P image

Immunohistochemistry: Paraffin-embedded Mouse kidney tissue stained with ARG66171 anti-FH / Fumarase antibody at 1:200 dilution (4°C, overnight). Antigen Retrieval: Boil tissue section in Sodium citrate buffer (pH 6.0) for 20 min.

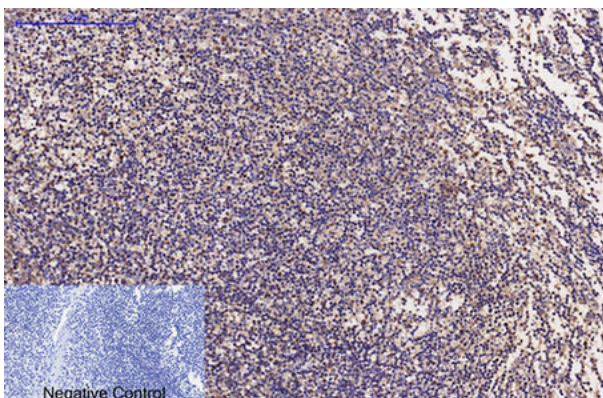
Negative control was used by secondary antibody only.



ARG66171 anti-FH / Fumarase antibody IHC-P image

Immunohistochemistry: Paraffin-embedded Mouse spleen tissue stained with ARG66171 anti-FH / Fumarase antibody at 1:200 dilution (4°C, overnight). Antigen Retrieval: Boil tissue section in Sodium citrate buffer (pH 6.0) for 20 min.

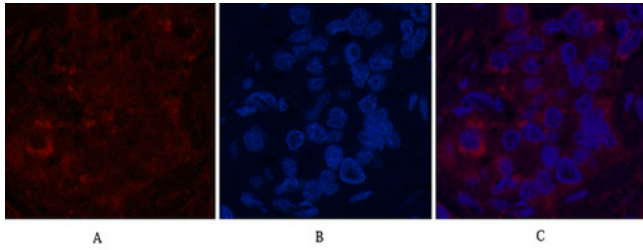
Negative control was used by secondary antibody only.



ARG66171 anti-FH / Fumarase antibody IHC-P image

Immunohistochemistry: Paraffin-embedded Human Tonsil tissue stained with ARG66171 anti-FH / Fumarase antibody at 1:200 dilution (4°C, overnight). Antigen Retrieval: Boil tissue section in Sodium citrate buffer (pH 6.0) for 20 min.

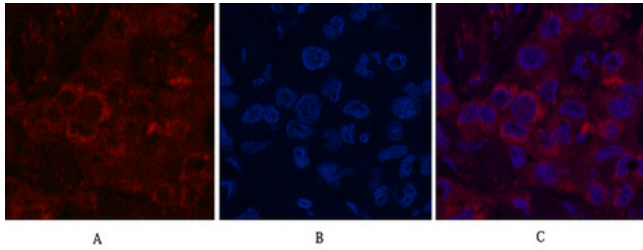
Negative control was used by secondary antibody only.



ARG66171 anti-FH / Fumarase antibody IHC image

Immunohistochemistry: Human liver cancer tissue stained with ARG66171 anti-FH / Fumarase antibody (red) at 1:200 dilution (4°C, overnight).

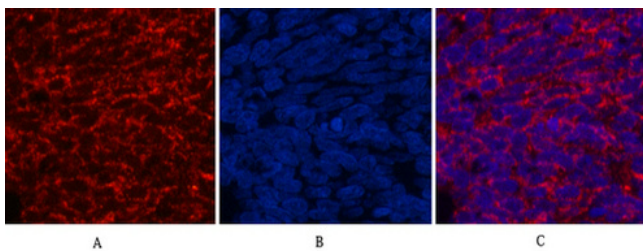
Picture A: Target. Picture B: DAPI. Picture C: merge of A+B.



ARG66171 anti-FH / Fumarase antibody IHC image

Immunohistochemistry: Human liver cancer tissue stained with ARG66171 anti-FH / Fumarase antibody (red) at 1:200 dilution (4°C, overnight).

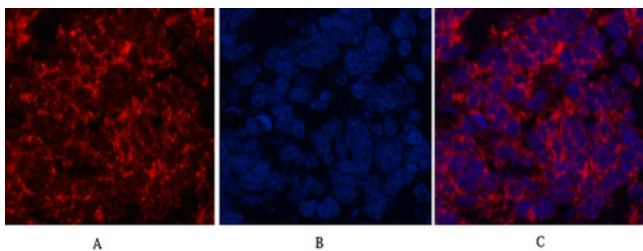
Picture A: Target. Picture B: DAPI. Picture C: merge of A+B.



ARG66171 anti-FH / Fumarase antibody IHC image

Immunohistochemistry: Human lung cancer tissue stained with ARG66171 anti-FH / Fumarase antibody (red) at 1:200 dilution (4°C, overnight).

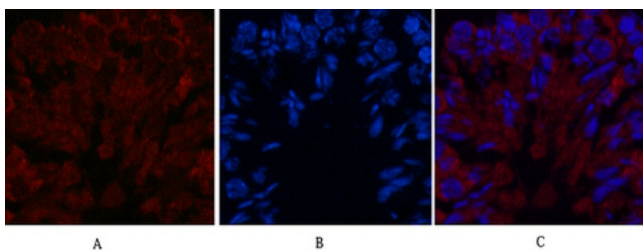
Picture A: Target. Picture B: DAPI. Picture C: merge of A+B.



ARG66171 anti-FH / Fumarase antibody IHC image

Immunohistochemistry: Human lung cancer tissue stained with ARG66171 anti-FH / Fumarase antibody (red) at 1:200 dilution (4°C, overnight).

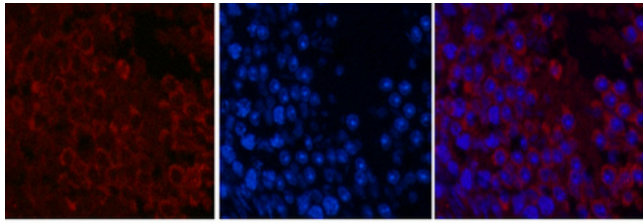
Picture A: Target. Picture B: DAPI. Picture C: merge of A+B.



ARG66171 anti-FH / Fumarase antibody IHC image

Immunohistochemistry: Mouse testis tissue stained with ARG66171 anti-FH / Fumarase antibody (red) at 1:200 dilution (4°C, overnight).

Picture A: Target. Picture B: DAPI. Picture C: merge of A+B.



A

B

C

ARG66171 anti-FH / Fumarase antibody IHC image

Immunohistochemistry: Mouse testis tissue stained with ARG66171 anti-FH / Fumarase antibody (red) at 1:200 dilution (4°C, overnight).

Picture A: Target. Picture B: DAPI. Picture C: merge of A+B.