

ARG66142 anti-CCL28 antibody

Package: 50 µg
Store at: -20°C

Summary

Product Description	Rabbit Polyclonal antibody recognizes CCL28
Tested Reactivity	Hu
Tested Application	ELISA, WB
Host	Rabbit
Clonality	Polyclonal
Isotype	IgG
Target Name	CCL28
Species	Human
Immunogen	E. coli derived recombinant Human CCL28. (SEAILPIASS CCTEVSHHIS RLLERVNMC RIQRADGDCD LAAVILHVKR RRICVSPHNH TVKQWMKVQA AKKNGKGNVC HRKKHHGKRN SNRAHQGKHE TYGHKTPY)
Conjugation	Un-conjugated
Alternate Names	SCYA28; MEC; Mucosae-associated epithelial chemokine; CCK1; C-C motif chemokine 28; Small-inducible cytokine A28; Protein CCK1

Application Instructions

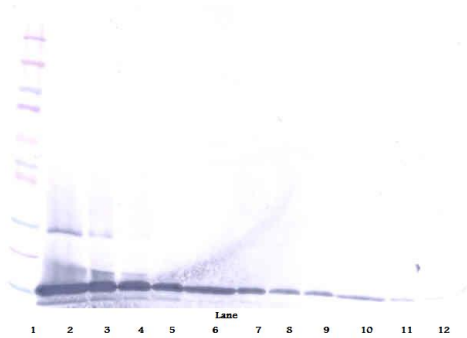
Application table	Application	Dilution
	ELISA	Sandwich: 0.5 - 2.0 µg/ml with ARG66143 as a detection antibody
	WB	0.1 - 0.2 µg/ml
Application Note	* The dilutions indicate recommended starting dilutions and the optimal dilutions or concentrations should be determined by the scientist.	

Properties

Form	Liquid
Purification	Affinity purification with immunogen.
Buffer	PBS (pH 7.2)
Concentration	1 mg/ml
Storage instruction	For continuous use, store undiluted antibody at 2-8°C for up to a week. For long-term storage, aliquot and store at -20°C or below. Storage in frost free freezers is not recommended. Avoid repeated freeze/thaw cycles. Suggest spin the vial prior to opening. The antibody solution should be gently mixed before use.
Note	For laboratory research only, not for drug, diagnostic or other use.

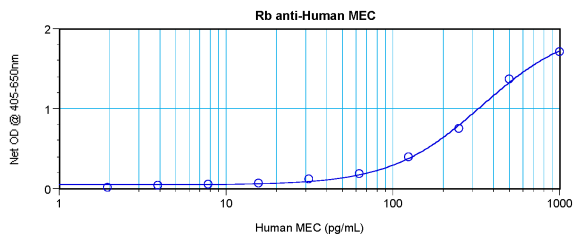
Database links	GeneID: 56477 Human Swiss-port # Q9NRJ3 Human
Gene Symbol	CCL28
Gene Full Name	chemokine (C-C motif) ligand 28
Background	This antimicrobial gene belongs to the subfamily of small cytokine CC genes. Cytokines are a family of secreted proteins involved in immunoregulatory and inflammatory processes. The CC cytokines are proteins characterized by two adjacent cysteines. The cytokine encoded by this gene displays chemotactic activity for resting CD4 or CD8 T cells and eosinophils. The product of this gene binds to chemokine receptors CCR3 and CCR10. This chemokine may play a role in the physiology of extracutaneous epithelial tissues, including diverse mucosal organs. Multiple transcript variants encoding two different isoforms have been found for this gene. [provided by RefSeq, Sep 2014]
Function	Chemotactic activity for resting CD4, CD8 T-cells and eosinophils. Binds to CCR3 and CCR10 and induces calcium mobilization in a dose-dependent manner. [UniProt]
Calculated Mw	14 kDa

Images



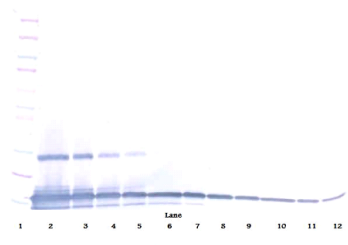
ARG66142 anti-CCL28 antibody WB image

Western blot: 250 - 0.24 ng of Human MEC stained with ARG66142 anti-CCL28 antibody, under reducing conditions.



ARG66142 anti-CCL28 antibody standard curve image

Sandwich ELISA: ARG66142 anti-CCL28 antibody as a capture antibody at 0.5 - 2.0 µg/ml combined with ARG66143 anti-CCL28 antibody (Biotin) as a detection antibody. Results of a typical standard run with optical density reading at 405 - 650 nm.



ARG66142 anti-CCL28 antibody WB image

Western blot: 250 - 0.24 ng of Human MEC stained with ARG66142 anti-CCL28 antibody, under non-reducing conditions.