

ARG66137 anti-CCL27 / CTACK antibody (Biotin)

Package: 50 µg
Store at: 4°C

Summary

Product Description	Biotin-conjugated Rabbit Polyclonal antibody recognizes CCL27 / CTACK
Tested Reactivity	Hu
Tested Application	ELISA, WB
Host	Rabbit
Clonality	Polyclonal
Isotype	IgG
Target Name	CCL27 / CTACK
Species	Human
Immunogen	E. coli derived recombinant Human CTACK / CCL27. (FLLPPSTACC TQLYRKPLSD KLLRKVIQVE LQEADGDCHL QAFVLHLAQR SICIHPQNPS LSQWFEHQER KLHGTLPKLN FGMLRKMG)
Conjugation	Biotin
Alternate Names	ILC; SCYA27; CTACK; Cutaneous T-cell-attracting chemokine; CTAK; PESKY; ESKINE; Skinkine; ESKINE; Small-inducible cytokine A27; IL-11 R-alpha-locus chemokine; C-C motif chemokine 27; ALP; CC chemokine ILC

Application Instructions

Application table	Application	Dilution
	ELISA	Direct: ~ 1.0 µg/ml Sandwich: 0.25 - 1.0 µg/ml with ARG66136 as a capture antibody
	WB	0.1 - 0.2 µg/ml

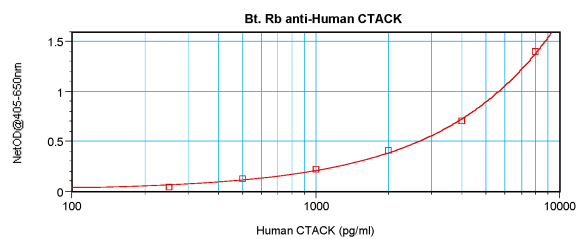
Application Note * The dilutions indicate recommended starting dilutions and the optimal dilutions or concentrations should be determined by the scientist.

Properties

Form	Liquid
Purification	Purified by affinity chromatography.
Buffer	PBS (pH 7.2)
Concentration	1 mg/ml
Storage instruction	Aliquot and store in the dark at 2-8°C. Keep protected from prolonged exposure to light. Avoid repeated freeze/thaw cycles. Suggest spin the vial prior to opening. The antibody solution should be gently mixed before use.
Note	For laboratory research only, not for drug, diagnostic or other use.

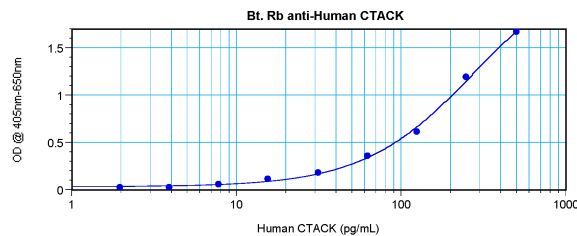
Database links	GeneID: 10850 Human Swiss-port # Q9Y4X3 Human
Gene Symbol	CCL27
Gene Full Name	chemokine (C-C motif) ligand 27
Background	This gene is one of several CC cytokine genes clustered on the p-arm of chromosome 9. Cytokines are a family of secreted proteins involved in immunoregulatory and inflammatory processes. The CC cytokines are proteins characterized by two adjacent cysteines. The protein encoded by this gene is chemotactic for skin-associated memory T lymphocytes. This cytokine may also play a role in mediating homing of lymphocytes to cutaneous sites. It specifically binds to chemokine receptor 10 (CCR10). Studies of a similar murine protein indicate that these protein-receptor interactions have a pivotal role in T cell-mediated skin inflammation. [provided by RefSeq, Sep 2014]
Function	Chemotactic factor that attracts skin-associated memory T-lymphocytes. May play a role in mediating homing of lymphocytes to cutaneous sites. Binds to CCR10. [UniProt]
Calculated Mw	13 kDa

Images



ARG66137 anti-CCL27 / CTACK antibody (Biotin) standard curve image

Direct ELISA: ARG66137 anti-CCL27 / CTACK antibody (Biotin) at ~ 1.0 µg/ml results of a typical standard run with optical density reading at 405 - 650 nm.



ARG66137 anti-CCL27 / CTACK antibody (Biotin) standard curve image

Sandwich ELISA: ARG66137 anti-CCL27 / CTACK antibody (Biotin) as a detection antibody at 0.25 - 1.0 µg/ml combined with ARG66136 anti-CTACK / CCL27 antibody as a capture antibody. Results of a typical standard run with optical density reading at 405 - 650 nm.