

ARG66131 anti-Neuroserpin antibody (Biotin)

Package: 50 µg
Store at: 4°C

Summary

Product Description	Biotin-conjugated Rabbit Polyclonal antibody recognizes Neuroserpin
Tested Reactivity	Hu
Tested Application	ELISA, WB
Host	Rabbit
Clonality	Polyclonal
Isotype	IgG
Target Name	Neuroserpin
Species	Human
Immunogen	E. coli derived recombinant Human Neuroserpin. (MTGATFPEEA IADLSVNMVN RLRATGEDEN ILFSPLSIAL AMGMMEGAQ GSTQKEIRHS MGYDSLKNGE EFSFLKEFSN MVTAKESQYV MKIANSLFVQ NGFHVNEEFL QMMKKYFNAA VNHVDFSQNV AVANYINKWV ENNTNNLVKD LVSPRDFDAA TYLALINAVY FKGNWKSQFR PENTRTFSFT KDDSEVQIP MMYQQGEFY GEFSDGSNEA GGIYQVLEIP YEGDEISMML VLSRQEVPLA TLEPLVKAQL VEEWANSVKK QKVEVYLPRF TVEQEIDLKD VLKALGITEI FIKDANLTGL SDNKEIFLSK AIHKSFLVN EEGSEAAVS GMIAISRMAY LYPQVVDHP FFLIRNRRT GTILFMGRVM HPETMNTSGH DFEEL)
Conjugation	Biotin
Alternate Names	Peptidase inhibitor 12; neuroserpin; Neuroserpin; Serpin I1; PI12; PI-12

Application Instructions

Application table	Application	Dilution
	ELISA	Direct: ~ 1.0 µg/ml Sandwich: 0.25 - 1.0 µg/ml with ARG66130 as a capture antibody
	WB	0.1 - 0.2 µg/ml
Application Note	* The dilutions indicate recommended starting dilutions and the optimal dilutions or concentrations should be determined by the scientist.	

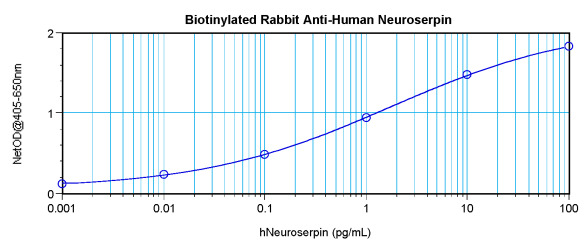
Properties

Form	Liquid
Purification	Purified by affinity chromatography.
Buffer	PBS (pH 7.2)
Concentration	1 mg/ml
Storage instruction	Aliquot and store in the dark at 2-8°C. Keep protected from prolonged exposure to light. Avoid repeated freeze/thaw cycles. Suggest spin the vial prior to opening. The antibody solution should be gently mixed before use.

Bioinformation

Database links	GeneID: 5274 Human Swiss-port # Q99574 Human
Gene Symbol	SERPINI1
Gene Full Name	serpin peptidase inhibitor, clade I (neuroserpin), member 1
Background	This gene encodes a member of the serpin superfamily of serine proteinase inhibitors. The protein is primarily secreted by axons in the brain, and preferentially reacts with and inhibits tissue-type plasminogen activator. It is thought to play a role in the regulation of axonal growth and the development of synaptic plasticity. Mutations in this gene result in familial encephalopathy with neuroserpin inclusion bodies (FENIB), which is a dominantly inherited form of familial encephalopathy and epilepsy characterized by the accumulation of mutant neuroserpin polymers. Multiple alternatively spliced variants, encoding the same protein, have been identified. [provided by RefSeq, Jul 2008]
Function	Serine protease inhibitor that inhibits plasminogen activators and plasmin but not thrombin. May be involved in the formation or reorganization of synaptic connections as well as for synaptic plasticity in the adult nervous system. May protect neurons from cell damage by tissue-type plasminogen activator. [UniProt]
Calculated Mw	46 kDa

Images



ARG66131 anti-Neuroserpin antibody (Biotin) standard curve image

Direct ELISA: ARG66131 anti-Neuroserpin antibody (Biotin) at ~ 1.0 µg/ml results of a typical standard run with optical density reading at 405 - 650 nm.