

ARG66130 anti-Neuroserpin antibody

Package: 50 µg
Store at: -20°C

Summary

Product Description	Rabbit Polyclonal antibody recognizes Neuroserpin
Tested Reactivity	Hu
Tested Application	ELISA, WB
Host	Rabbit
Clonality	Polyclonal
Isotype	IgG
Target Name	Neuroserpin
Species	Human
Immunogen	E. coli derived recombinant Human Neuroserpin. (MTGATFPEEA IADLSVNMVN RLRATGEDEN ILFSPLSIAL AMGMMEGAQ GSTQKEIRHS MGYDSLKNGE EFSFLKEFSN MVTAKESQYV MKIANSLFVQ NGFHVNEEFL QMMKKYFNAA VNHVDFSQNV AVANYINKWV ENNTNNLVKD LVSPRDFDAA TYLALINAVY FKGNWKSQFR PENTRTFSFT KDDSEVQIP MMYQQGEFY GEFSDGSNEA GGIYQVLEIP YEGDEISMML VLSRQEVPLA TLEPLVKAQL VEEWANSVKK QKVEVYLPRF TVEQEIDLKD VLKALGITEI FIKDANLTGL SDNKEIFLSK AIHKSFLVN EEGSEAAVS GMIAISRMV LYPQVVDHP FFLIRNRRT GTILFMGRVM HPETMNTSGH DFEEL)
Conjugation	Un-conjugated
Alternate Names	Peptidase inhibitor 12; neuroserpin; Neuroserpin; Serpin I1; PI12; PI-12

Application Instructions

Application table	Application	Dilution
	ELISA	Sandwich: 0.5 - 2.0 µg/ml with ARG66131 as a detection antibody
	WB	0.1 - 0.2 µg/ml
Application Note	* The dilutions indicate recommended starting dilutions and the optimal dilutions or concentrations should be determined by the scientist.	

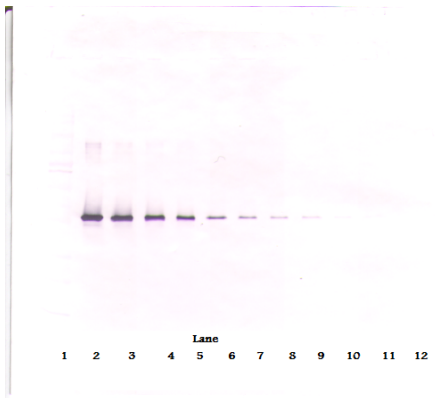
Properties

Form	Liquid
Purification	Affinity purification with immunogen.
Buffer	PBS (pH 7.2)
Concentration	1 mg/ml
Storage instruction	For continuous use, store undiluted antibody at 2-8°C for up to a week. For long-term storage, aliquot and store at -20°C or below. Storage in frost free freezers is not recommended. Avoid repeated freeze/thaw cycles. Suggest spin the vial prior to opening. The antibody solution should be gently mixed before use.

Bioinformation

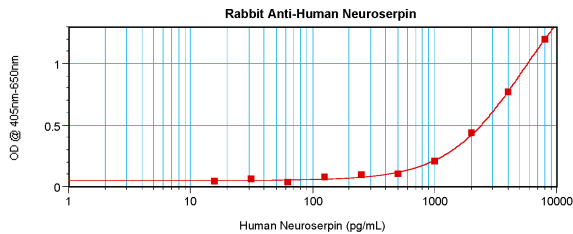
Database links	GeneID: 5274 Human Swiss-port # Q99574 Human
Gene Symbol	SERPINI1
Gene Full Name	serpin peptidase inhibitor, clade I (neuroserpin), member 1
Background	This gene encodes a member of the serpin superfamily of serine proteinase inhibitors. The protein is primarily secreted by axons in the brain, and preferentially reacts with and inhibits tissue-type plasminogen activator. It is thought to play a role in the regulation of axonal growth and the development of synaptic plasticity. Mutations in this gene result in familial encephalopathy with neuroserpin inclusion bodies (FENIB), which is a dominantly inherited form of familial encephalopathy and epilepsy characterized by the accumulation of mutant neuroserpin polymers. Multiple alternatively spliced variants, encoding the same protein, have been identified. [provided by RefSeq, Jul 2008]
Function	Serine protease inhibitor that inhibits plasminogen activators and plasmin but not thrombin. May be involved in the formation or reorganization of synaptic connections as well as for synaptic plasticity in the adult nervous system. May protect neurons from cell damage by tissue-type plasminogen activator. [UniProt]
Calculated Mw	46 kDa

Images



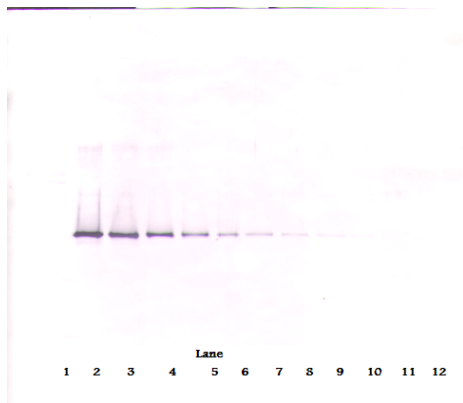
ARG66130 anti-Neuroserpin antibody WB image

Western blot: 250 - 0.24 ng of Human Neuroserpin stained with ARG66130 anti-Neuroserpin antibody, under non-reducing conditions.



ARG66130 anti-Neuroserpin antibody standard curve image

Sandwich ELISA: ARG66130 anti-Neuroserpin antibody as a capture antibody at 0.5 - 2.0 µg/ml combined with ARG66131 anti-Neuroserpin antibody (Biotin) as a detection antibody. Results of a typical standard run with optical density reading at 405 - 650 nm.



ARG66130 anti-Neuroserpin antibody WB image

Western blot: 250 - 0.24 ng of Human Neuroserpin stained with ARG66130 anti-Neuroserpin antibody, under reducing conditions.