

## ARG66118 anti-SERPINA12 / Vaspin antibody

Package: 50 µg  
Store at: -20°C

### Summary

Product Description	Rabbit Polyclonal antibody recognizes SERPINA12 / Vaspin
Tested Reactivity	Hu
Tested Application	ELISA
Host	Rabbit
Clonality	Polyclonal
Isotype	IgG
Target Name	SERPINA12 / Vaspin
Species	Human
Immunogen	E. coli derived recombinant Human SERPINA12 / Vaspin. (MLKPSFSPRN YKALSEVQGW KQRMAAKELA RQNMDLGFKL LKKLAFYNPG RNIFLSPLSI STAFSMLCLG AQDSTLDEIK QGFNFRKMPE KDLHEGFHYI IHELTQKTQD LKLSIGNTLF IDQRLQPQRK FLEDAKNFYS AETILTNTFQN LEMAQKQIND FISQKTHGKI NNLIENIDPG TVMLLANYIF FRARWKHEFD PNVTKEDFF LEKNSSVKVP MMFRSGIYQV GYDDKLSCTI LEIPYQKNIT AIFILPDEGK LKHLEKGLQV DTFSRWKTL SRRVVDVSVPL RHMTGTGFDL KKTLSYIGVS KIFEEHGDLT KIAPHRSLKV GEAVHKAELK MDERGTEGAA GTGAQTLPMETPLVVKIDKP YLLIYSEKI PSVFLGKIV NPIGK)
Conjugation	Un-conjugated
Alternate Names	Vaspin; Visceral adipose tissue-derived serine protease inhibitor; Visceral adipose-specific serpin; OL-64; Serpin A12

### Application Instructions

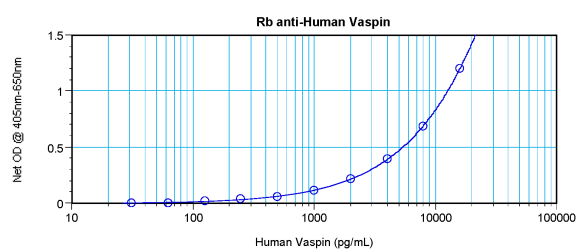
Application table	Application	Dilution
	ELISA	Sandwich: 0.5 - 2.0 µg/ml with ARG66119 as a detection antibody
Application Note	* The dilutions indicate recommended starting dilutions and the optimal dilutions or concentrations should be determined by the scientist.	

### Properties

Form	Liquid
Purification	Affinity purification with immunogen.
Buffer	PBS (pH 7.2)
Concentration	1 mg/ml
Storage instruction	For continuous use, store undiluted antibody at 2-8°C for up to a week. For long-term storage, aliquot and store at -20°C or below. Storage in frost free freezers is not recommended. Avoid repeated freeze/thaw cycles. Suggest spin the vial prior to opening. The antibody solution should be gently mixed before use.
Note	For laboratory research only, not for drug, diagnostic or other use.

Database links	<a href="#">GeneID: 145264 Human</a> <a href="#">Swiss-port # Q8IW75 Human</a>
Gene Symbol	SERPINA12
Gene Full Name	serpin peptidase inhibitor, clade A (alpha-1 antiproteinase, antitrypsin), member 12
Function	Adipokine that modulates insulin action by specifically inhibiting its target protease KLK7 in white adipose tissues. [UniProt]
Calculated Mw	47 kDa

Images



ARG66118 anti-SERPINA12 / Vaspin antibody standard curve image

Sandwich ELISA: ARG66118 anti-SERPINA12 / Vaspin antibody as a capture antibody at 0.5 - 2.0 µg/ml combined with ARG66119 anti-SERPINA12 / Vaspin antibody (Biotin) as a detection antibody. Results of a typical standard run with optical density reading at 405 - 650 nm.