

## ARG66116 anti-BTC / Betacellulin antibody

Package: 50 µg  
Store at: -20°C

### Summary

Product Description	Rabbit Polyclonal antibody recognizes BTC / Betacellulin
Tested Reactivity	Hu
Tested Application	ELISA, IHC-P, Neut, WB
Host	Rabbit
Clonality	Polyclonal
Isotype	IgG
Target Name	BTC / Betacellulin
Species	Human
Immunogen	E. coli derived recombinant Human Betacellulin. (DGNSTRSPET NGLLCGDPEE NCAATTTQSK RKGHFSRCPK QYKHICYKGR CRFVVAEQTP SCVCDEGYIG ARCERVDLFY)
Conjugation	Un-conjugated
Alternate Names	Probetacellulin; BTC

### Application Instructions

Application table	Application	Dilution
	ELISA	Sandwich: 0.5 - 2.0 µg/ml with ARG66117 as a detection antibody
	IHC-P	2.5 µg/ml
	Neut	≤ 0.1 µg/ml (To yield [ND50] of the biological activity of Human Betacellulin (0.1 ng/ml) )
	WB	0.1 - 0.2 µg/ml
Application Note	* The dilutions indicate recommended starting dilutions and the optimal dilutions or concentrations should be determined by the scientist.	

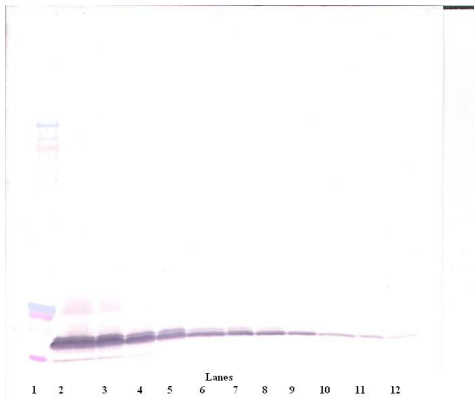
### Properties

Form	Liquid
Purification	Affinity purification with immunogen.
Buffer	PBS (pH 7.2)
Concentration	1 mg/ml
Storage instruction	For continuous use, store undiluted antibody at 2-8°C for up to a week. For long-term storage, aliquot and store at -20°C or below. Storage in frost free freezers is not recommended. Avoid repeated freeze/thaw cycles. Suggest spin the vial prior to opening. The antibody solution should be gently mixed before use.

Bioinformation

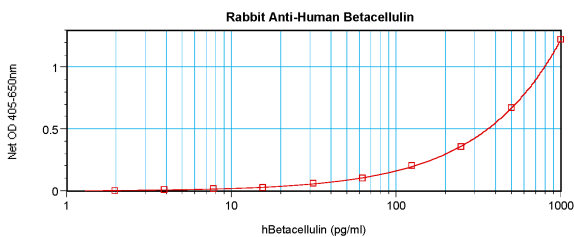
Database links	<a href="#">GeneID: 685 Human</a> <a href="#">Swiss-port # P35070 Human</a>
Gene Symbol	BTC
Gene Full Name	betacellulin
Background	The protein encoded by this gene is a member of the EGF family of growth factors. It is synthesized primarily as a transmembrane precursor, which is then processed to mature molecule by proteolytic events. This protein is a ligand for the EGF receptor. [provided by RefSeq, Jul 2008]
Function	Growth factor that binds to EGFR, ERBB4 and other EGF receptor family members. Potent mitogen for retinal pigment epithelial cells and vascular smooth muscle cells. [UniProt]
Calculated Mw	20 kDa

Images



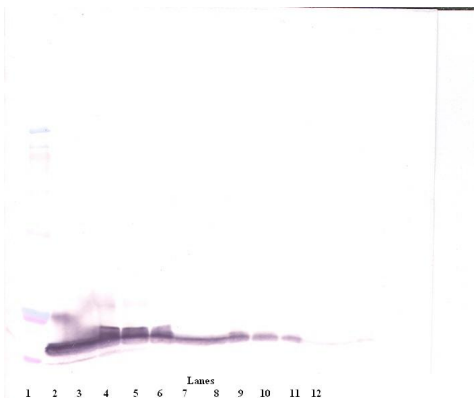
ARG66116 anti-BTC / Betacellulin antibody WB image

Western blot: 250 - 0.24 ng of Human Betacellulin stained with ARG66116 anti-BTC / Betacellulin antibody, under non-reducing conditions.



ARG66116 anti-BTC / Betacellulin antibody standard curve image

Sandwich ELISA: ARG66116 anti-BTC / Betacellulin antibody as a capture antibody at 0.5 - 2.0 µg/ml combined with ARG66117 anti-Betacellulin antibody (Biotin) as a detection antibody. Results of a typical standard run with optical density reading at 405 - 650 nm.



ARG66116 anti-BTC / Betacellulin antibody WB image

Western blot: 250 - 0.24 ng of Human Betacellulin stained with ARG66116 anti-BTC / Betacellulin antibody, under reducing conditions.