

ARG66101 anti-IGFBP7 antibody (Biotin)

Package: 50 µg
Store at: 4°C

Summary

Product Description	Biotin-conjugated Rabbit Polyclonal antibody recognizes IGFBP7
Tested Reactivity	Hu
Tested Application	ELISA, WB
Host	Rabbit
Clonality	Polyclonal
Isotype	IgG
Target Name	IGFBP7
Species	Human
Immunogen	E. coli derived recombinant Human IGFBP7. (SSSDTCGPCE PASCPLPPL GCLLETTRDA CGCCPMCARG EGEPCCGGGA GRGYCAPGME CVKSRKRRKG KAGAAAGGPG VSGVCVKSR YPVCSDGTT YPSGCQLRAA SQRAESRGEK AITQVSKGTC EQGPSIVTTP KDIWNVTGAQ VYLSCEVIGI PTPVLIWNKV KRHYGVQRT ELLPGDRDNL AIQTRGGPEK HEVTGWVLVS PLSKEDAGEY ECHASNSQGQ ASASAKITVV DALHEIPVKK GEGAEI)
Conjugation	Biotin
Alternate Names	AGM; RAMSVPS; IBP-7; PSF; IGFBP-7; FSTL2; Tumor-derived adhesion factor; Insulin-like growth factor-binding protein 7; IGFBPRP1; TAF; MAC25; PGI2-stimulating factor; IGFBP-rP1; IGF-binding protein 7; IGFBP-7v; MAC25 protein; Prostacyclin-stimulating factor

Application Instructions

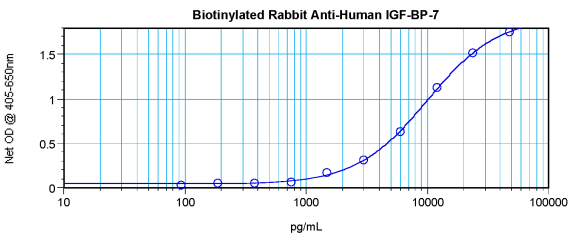
Application table	Application	Dilution
	ELISA	Direct: 0.25 - 1.0 µg/ml Sandwich: 0.25 - 1.0 µg/ml with ARG66100 as a capture antibody
	WB	0.1 - 0.2 µg/ml
Application Note	* The dilutions indicate recommended starting dilutions and the optimal dilutions or concentrations should be determined by the scientist.	

Properties

Form	Liquid
Purification	Purified by affinity chromatography.
Buffer	PBS (pH 7.2)
Concentration	1 mg/ml
Storage instruction	Aliquot and store in the dark at 2-8°C. Keep protected from prolonged exposure to light. Avoid repeated freeze/thaw cycles. Suggest spin the vial prior to opening. The antibody solution should be gently mixed before use.

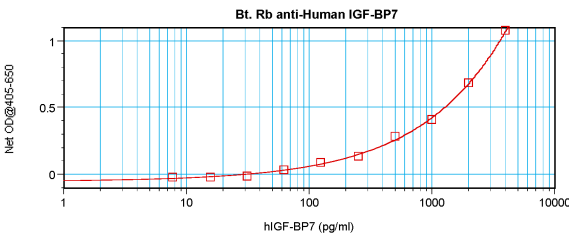
Note	For laboratory research only, not for drug, diagnostic or other use.
<div>Bioinformation</div>	
Database links	GeneID: 3490 Human Swiss-port # Q16270 Human
Gene Symbol	IGFBP7
Gene Full Name	insulin-like growth factor binding protein 7
Background	<p>This gene encodes a member of the insulin-like growth factor (IGF)-binding protein (IGFBP) family. IGFBPs bind IGFs with high affinity, and regulate IGF availability in body fluids and tissues and modulate IGF binding to its receptors. This protein binds IGF-I and IGF-II with relatively low affinity, and belongs to a subfamily of low-affinity IGFBPs. It also stimulates prostacyclin production and cell adhesion. Alternatively spliced transcript variants encoding different isoforms have been described for this gene, and one variant has been associated with retinal arterial macroaneurysm (PMID:21835307). [provided by RefSeq, Dec 2011]</p>
Function	Binds IGF-I and IGF-II with a relatively low affinity. Stimulates prostacyclin (PGI2) production. Stimulates cell adhesion. [UniProt]
Calculated Mw	29 kDa
PTM	N-glycosylated.

Images



ARG66101 anti-IGFBP7 antibody (Biotin) standard curve image

Direct ELISA: ARG66101 anti-IGFBP7 antibody (Biotin) at 0.25 - 1.0 µg/ml results of a typical standard run with optical density reading at 405 - 650 nm.



ARG66101 anti-IGFBP7 antibody (Biotin) standard curve image

Sandwich ELISA: ARG66101 anti-IGFBP7 antibody (Biotin) as a detection antibody at 0.25 - 1.0 µg/ml combined with ARG66100 anti-IGFBP7 antibody as a capture antibody. Results of a typical standard run with optical density reading at 405 - 650 nm.