

ARG66100 anti-IGFBP7 antibody

Package: 50 µg
Store at: -20°C

Summary

Product Description	Rabbit Polyclonal antibody recognizes IGFBP7
Tested Reactivity	Hu
Tested Application	ELISA, WB
Host	Rabbit
Clonality	Polyclonal
Isotype	IgG
Target Name	IGFBP7
Species	Human
Immunogen	E. coli derived recombinant Human IGFBP7. (SSSDTCGPCE PASCPLPPL GCLLGETRDA CGCCPMCARG EGEP CGGGGA GRGYCAPGME CVKSRKRRKG KAGAAAGGPG VSGVCVCKSR YPVC GSDGTT YPSGCQLRAA SQRAESRGEK AITQVSKGTC EQGPSIVTPP KDIWNVTGAQ VYLSCEVIGI PTPVLIWNKV KRGHYGVQRT ELLPGDRDNL AIQTRGGPEK HEVTGWVLVS PLSKEDAGEY ECHASNSQGQ ASASAKITVV DALHEIPVKK GEGAEL)
Conjugation	Un-conjugated
Alternate Names	AGM; RAMSVPS; IBP-7; PSF; IGFBP-7; FSTL2; Tumor-derived adhesion factor; Insulin-like growth factor-binding protein 7; IGFBPRP1; TAF; MAC25; PGI2-stimulating factor; IGFBP-rP1; IGF-binding protein 7; IGFBP-7v; MAC25 protein; Prostacyclin-stimulating factor

Application Instructions

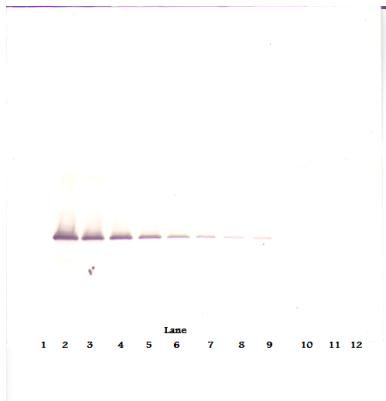
Application table	Application	Dilution
	ELISA	Sandwich: 0.5 - 2.0 µg/ml with ARG66101 as a detection antibody
	WB	0.1 - 0.2 µg/ml
Application Note	* The dilutions indicate recommended starting dilutions and the optimal dilutions or concentrations should be determined by the scientist.	

Properties

Form	Liquid
Purification	Affinity purification with immunogen.
Buffer	PBS (pH 7.2)
Concentration	1 mg/ml
Storage instruction	For continuous use, store undiluted antibody at 2-8°C for up to a week. For long-term storage, aliquot and store at -20°C or below. Storage in frost free freezers is not recommended. Avoid repeated freeze/thaw cycles. Suggest spin the vial prior to opening. The antibody solution should be gently mixed before use.

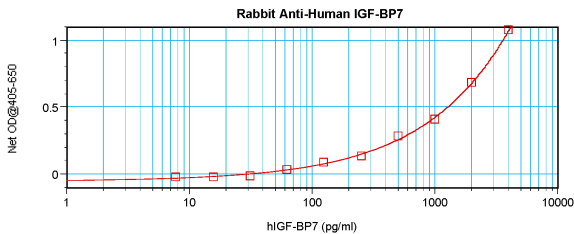
Note	For laboratory research only, not for drug, diagnostic or other use.
Bioinformation	
Database links	GeneID: 3490 Human Swiss-port # Q16270 Human
Gene Symbol	IGFBP7
Gene Full Name	insulin-like growth factor binding protein 7
Background	<p>This gene encodes a member of the insulin-like growth factor (IGF)-binding protein (IGFBP) family. IGFBPs bind IGFs with high affinity, and regulate IGF availability in body fluids and tissues and modulate IGF binding to its receptors. This protein binds IGF-I and IGF-II with relatively low affinity, and belongs to a subfamily of low-affinity IGFBPs. It also stimulates prostacyclin production and cell adhesion. Alternatively spliced transcript variants encoding different isoforms have been described for this gene, and one variant has been associated with retinal arterial macroaneurysm (PMID:21835307). [provided by RefSeq, Dec 2011]</p>
Function	Binds IGF-I and IGF-II with a relatively low affinity. Stimulates prostacyclin (PGI2) production. Stimulates cell adhesion. [UniProt]
Calculated Mw	29 kDa
PTM	N-glycosylated.

Images



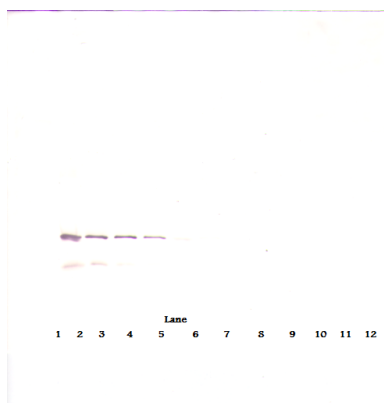
ARG66100 anti-IGFBP7 antibody WB image

Western blot: 250 - 0.24 ng of Human IGF-BP7 stained with ARG66100 anti-IGFBP7 antibody, under non-reducing conditions.



ARG66100 anti-IGFBP7 antibody standard curve image

Sandwich ELISA: ARG66100 anti-IGFBP7 antibody as a capture antibody at 0.5 - 2.0 µg/ml combined with ARG66101 anti-IGFBP7 antibody (Biotin) as a detection antibody. Results of a typical standard run with optical density reading at 405 - 650 nm.



ARG66100 anti-IGFBP7 antibody WB image

Western blot: 250 - 0.24 ng of Human IGF-BP7 stained with ARG66100 anti-IGFBP7 antibody, under reducing conditions.