

ARG66086 anti-IL1RA antibody

Package: 50 µg
Store at: -20°C

Summary

Product Description	Rabbit Polyclonal antibody recognizes IL1RA
Tested Reactivity	Hu
Tested Application	ELISA, Neut, WB
Host	Rabbit
Clonality	Polyclonal
Isotype	IgG
Target Name	IL1RA
Species	Human
Immunogen	E. coli derived recombinant Human IL1RA. (MRPSGRKSSK MQAFRIWDVN QKTFYLRNNQ LVAGYLQGN VNLEEKIDVV PIEPHALFLG IHGGKMCLSC VKSGDETRLQ LEAVNITDLS ENRKQDKRFA FIRSDSGPTT SFESAACPGW FLCTAMEADQ PVSLTNMPDE GVMVTKFYFQ EDE)
Conjugation	Un-conjugated
Alternate Names	IL1 inhibitor; Interleukin-1 receptor antagonist protein; ICIL-1RA; MVCD4; IL1RA; DIRA; IL-1RN; Anakinra; IL1F3; IRAP; IL-1ra; IL-1ra3

Application Instructions

Application table	Application	Dilution
	ELISA	Sandwich: 0.5 - 2.0 µg/ml with ARG66087 as a detection antibody
	Neut	2.5 - 3.7 µg/ml (To yield [ND50] of the biological activity of Human IL-1RA (50.0 ng/ml) and Human IL-1α(50.0 pg/ml))
	WB	0.1 - 0.2 µg/ml
Application Note	* The dilutions indicate recommended starting dilutions and the optimal dilutions or concentrations should be determined by the scientist.	

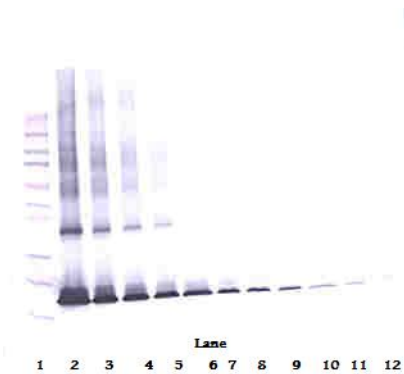
Properties

Form	Liquid
Purification	Affinity purification with immunogen.
Buffer	PBS (pH 7.2)
Concentration	1 mg/ml
Storage instruction	For continuous use, store undiluted antibody at 2-8°C for up to a week. For long-term storage, aliquot and store at -20°C or below. Storage in frost free freezers is not recommended. Avoid repeated freeze/thaw cycles. Suggest spin the vial prior to opening. The antibody solution should be gently mixed before use.

Bioinformation

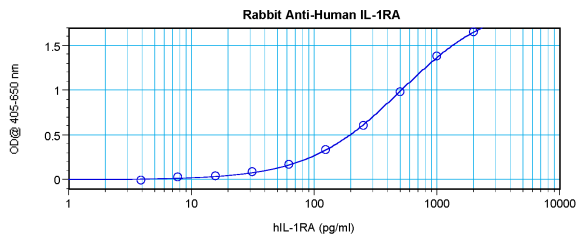
Database links	GeneID: 3557 Human Swiss-port # P18510 Human
Gene Symbol	IL1RN
Gene Full Name	interleukin 1 receptor antagonist
Background	The protein encoded by this gene is a member of the interleukin 1 cytokine family. This protein inhibits the activities of interleukin 1, alpha (IL1A) and interleukin 1, beta (IL1B), and modulates a variety of interleukin 1 related immune and inflammatory responses. This gene and five other closely related cytokine genes form a gene cluster spanning approximately 400 kb on chromosome 2. A polymorphism of this gene is reported to be associated with increased risk of osteoporotic fractures and gastric cancer. Four alternatively spliced transcript variants encoding distinct isoforms have been reported. [provided by RefSeq, Jul 2008]
Function	Inhibits the activity of interleukin-1 by binding to receptor IL1R1 and preventing its association with the coreceptor IL1RAP for signaling. Has no interleukin-1 like activity. Binds functional interleukin-1 receptor IL1R1 with greater affinity than decoy receptor IL1R2; however, the physiological relevance of the latter association is unsure. [UniProt]
Calculated Mw	20 kDa

Images



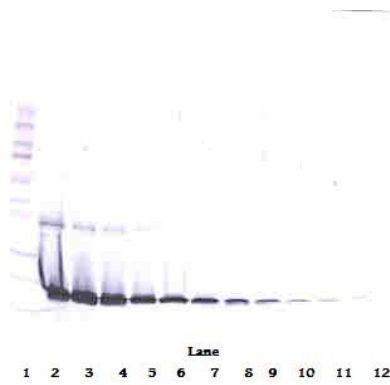
ARG66086 anti-IL1RA antibody WB image

Western blot: 250 - 0.24 ng of Human IL-1RA stained with ARG66086 anti-IL1RA antibody, under non-reducing conditions.



ARG66086 anti-IL1RA antibody standard curve image

Sandwich ELISA: ARG66086 anti-IL1RA antibody as a capture antibody at 0.5 - 2.0 µg/ml combined with ARG66087 anti-IL1RA antibody (Biotin) as a detection antibody. Results of a typical standard run with optical density reading at 405 - 650 nm.



ARG66086 anti-IL1RA antibody WB image

Western blot: 250 - 0.24 ng of Human IL-1RA stained with ARG66086 anti-IL1RA antibody, under reducing conditions.