

ARG66074 anti-Resistin antibody (Biotin)

Package: 50 µg
Store at: 4°C

Summary

Product Description	Biotin-conjugated Goat Polyclonal antibody recognizes Resistin
Tested Reactivity	Hu
Tested Application	ELISA, WB
Host	Goat
Clonality	Polyclonal
Isotype	IgG
Target Name	Resistin
Species	Human
Immunogen	E. coli derived recombinant Human Resistin. (SSKTLCSMEE AINERIQEVA GSLIFRAISS IGLEQSVTS RGDLATCPRG FAVTGCTCGS ACGSWDVRAE TTCHCQCAGM DWTGARCCRV QP)
Conjugation	Biotin
Alternate Names	C/EBP-epsilon-regulated myeloid-specific secreted cysteine-rich protein; Cysteine-rich secreted protein A12-alpha-like 2; XCP1; Resistin; Adipose tissue-specific secretory factor; FIZZ3; RETN1; ADSF; Cysteine-rich secreted protein FIZZ3; RSTN

Application Instructions

Application table	Application	Dilution
	ELISA	Direct: 0.25 - 1.0 µg/ml Sandwich: 0.25 - 1.0 µg/ml with ARG66073 as a capture antibody
	WB	0.1 - 0.2 µg/ml

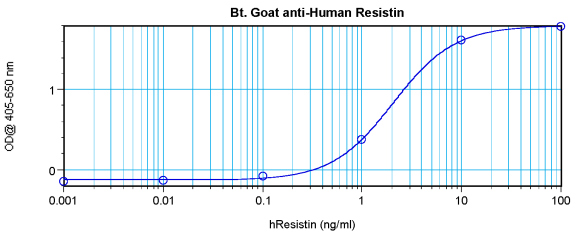
Application Note * The dilutions indicate recommended starting dilutions and the optimal dilutions or concentrations should be determined by the scientist.

Properties

Form	Liquid
Purification	Purified by affinity chromatography.
Buffer	PBS (pH 7.2)
Concentration	1 mg/ml
Storage instruction	Aliquot and store in the dark at 2-8°C. Keep protected from prolonged exposure to light. Avoid repeated freeze/thaw cycles. Suggest spin the vial prior to opening. The antibody solution should be gently mixed before use.
Note	For laboratory research only, not for drug, diagnostic or other use.

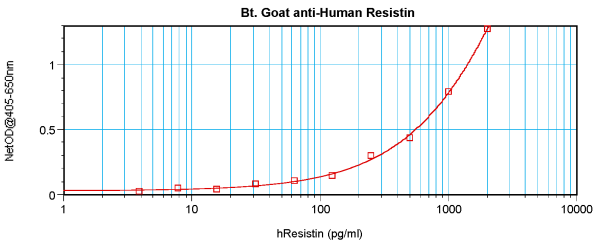
Database links	GeneID: 56729 Human Swiss-port # Q9HD89 Human
Gene Symbol	RETN
Gene Full Name	resistin
Background	This gene belongs to the family defined by the mouse resistin-like genes. The characteristic feature of this family is the C-terminal stretch of 10 cys residues with identical spacing. The mouse homolog of this protein is secreted by adipocytes, and may be the hormone potentially linking obesity to type II diabetes. Alternatively spliced transcript variants encoding the same protein have been found for this gene. [provided by RefSeq, Jul 2010]
Function	Hormone that seems to suppress insulin ability to stimulate glucose uptake into adipose cells. Potentially links obesity to diabetes. [UniProt]
Calculated Mw	11 kDa

Images



ARG66074 anti-Resistin antibody (Biotin) standard curve image

Direct ELISA: ARG66074 anti-Resistin antibody (Biotin) at 0.25 - 1.0 μ g/ml results of a typical standard run with optical density reading at 405 - 650 nm.



ARG66074 anti-Resistin antibody (Biotin) standard curve image

Sandwich ELISA: ARG66074 anti-Resistin antibody (Biotin) as a detection antibody at 0.25 - 1.0 μ g/ml combined with ARG66073 anti-Resistin antibody as a capture antibody. Results of a typical standard run with optical density reading at 405 - 650 nm.