

ARG66073 anti-Resistin antibody

Package: 50 µg
Store at: -20°C

Summary

Product Description	Goat Polyclonal antibody recognizes Resistin
Tested Reactivity	Hu, Ms
Tested Application	ELISA, IHC-P, WB
Host	Goat
Clonality	Polyclonal
Isotype	IgG
Target Name	Resistin
Species	Human
Immunogen	E. coli derived recombinant Human Resistin. (SSKTLCSMEE AINERIQEVA GSLIFRAISS IGLEQSVTS RGLDLCPRG FAVTGCTCGS ACGSWDVRAE TTCHCQCAGM DWTGARCCRV QP)
Conjugation	Un-conjugated
Alternate Names	C/EBP-epsilon-regulated myeloid-specific secreted cysteine-rich protein; Cysteine-rich secreted protein A12-alpha-like 2; XCP1; Resistin; Adipose tissue-specific secretory factor; FIZZ3; RETN1; ADSF; Cysteine-rich secreted protein FIZZ3; RSTN

Application Instructions

Application table	Application	Dilution
	ELISA	Sandwich: 0.5 - 2.0 µg/ml with ARG66074 as a detection antibody
	IHC-P	1 µg/ml
	WB	0.1 - 0.2 µg/ml
Application Note	IHC-P: Antigen Retrieval: Boil tissue section in Sodium Citrate buffer (pH 6.0) followed by cooling at RT for 20 min. * The dilutions indicate recommended starting dilutions and the optimal dilutions or concentrations should be determined by the scientist.	

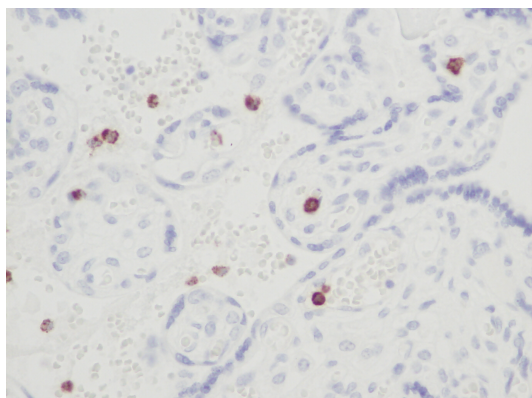
Properties

Form	Liquid
Purification	Affinity purification with immunogen.
Buffer	PBS (pH 7.2)
Concentration	1 mg/ml
Storage instruction	For continuous use, store undiluted antibody at 2-8°C for up to a week. For long-term storage, aliquot and store at -20°C or below. Storage in frost free freezers is not recommended. Avoid repeated freeze/thaw cycles. Suggest spin the vial prior to opening. The antibody solution should be gently mixed before use.

Bioinformation

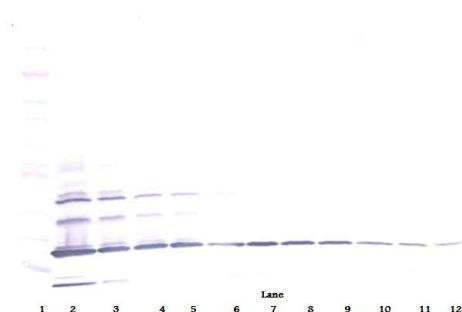
Database links	GeneID: 56729 Human
	GeneID: 57264 Mouse
	Swiss-port # Q99P87 Mouse
	Swiss-port # Q9HD89 Human
Gene Symbol	RETN
Gene Full Name	resistin
Background	This gene belongs to the family defined by the mouse resistin-like genes. The characteristic feature of this family is the C-terminal stretch of 10 cys residues with identical spacing. The mouse homolog of this protein is secreted by adipocytes, and may be the hormone potentially linking obesity to type II diabetes. Alternatively spliced transcript variants encoding the same protein have been found for this gene. [provided by RefSeq, Jul 2010]
Function	Hormone that seems to suppress insulin ability to stimulate glucose uptake into adipose cells. Potentially links obesity to diabetes. [UniProt]
Calculated Mw	11 kDa

Images



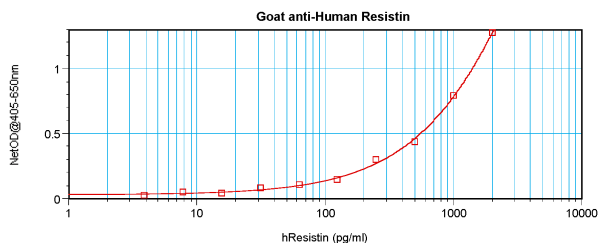
ARG66073 anti-Resistin antibody IHC-P image

Immunohistochemistry: Formalin-fixed and paraffin-embedded sections of Human normal placenta. The recommended ARG66073 anti-Resistin antibody concentration is 1.0 µg/ml with a two hour incubation at RT. An HRP-labeled polymer detection system was used with a DAB chromogen. Antigen Retrieval: Boil tissue section in Sodium Citrate buffer (pH 6.0) followed by cooling at RT for 20 min.



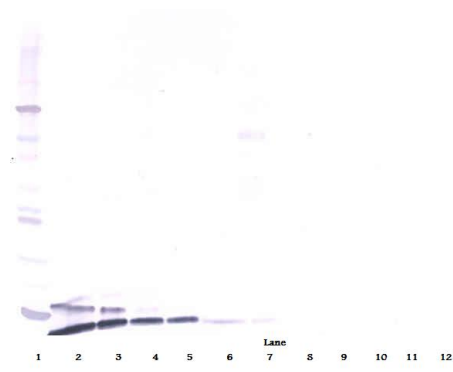
ARG66073 anti-Resistin antibody WB image

Western blot: 250 - 0.24 ng of Human Resistin stained with ARG66073 anti-Resistin antibody, under non-reducing conditions.



ARG66073 anti-Resistin antibody standard curve image

Sandwich ELISA: ARG66073 anti-Resistin antibody as a capture antibody at 0.5 - 2.0 $\mu\text{g/ml}$ combined with ARG66074 anti-Resistin antibody (Biotin) as a detection antibody. Results of a typical standard run with optical density reading at 405 - 650 nm.



ARG66073 anti-Resistin antibody WB image

Western blot: 250 - 0.24 ng of Human Resistin stained with ARG66073 anti-Resistin antibody, under reducing conditions.