

## ARG66040 anti-CCL15 antibody (Biotin)

Package: 50 µg  
Store at: 4°C

### Summary

Product Description	Biotin-conjugated Goat Polyclonal antibody recognizes CCL15
Tested Reactivity	Hu
Tested Application	ELISA, WB
Host	Goat
Clonality	Polyclonal
Isotype	IgG
Target Name	CCL15
Species	Human
Immunogen	E. coli derived recombinant Human CL15. (QFTNDAETEL MMSKLPLENP VVLNSFHFAA DCCTSYISQS IPCSLMKSYF ETSSECSKPG VIFLTKKGRQ VCAKPSGPGV QDCMKKLPY SI)
Conjugation	Biotin
Alternate Names	Small-inducible cytokine A15; SCYL3; LKN-1; 22-92; Chemokine CC-2; HMRP-2B; MIP-1 delta; NCC-3; 29-92; C-C motif chemokine 15; SY15; MIP-1D; MRP-2B; MIP-5; Leukotactin-1; NCC3; SCYA15; HCC-2; 25-92; Macrophage inflammatory protein 5; Mrp-2b; LKN1

### Application Instructions

Application table	Application	Dilution
	ELISA	Direct: 0.25 - 1.0 µg/ml Sandwich: 0.25 - 1.0 µg/ml with ARG66039 as a capture antibody
	WB	0.1 - 0.2 µg/ml

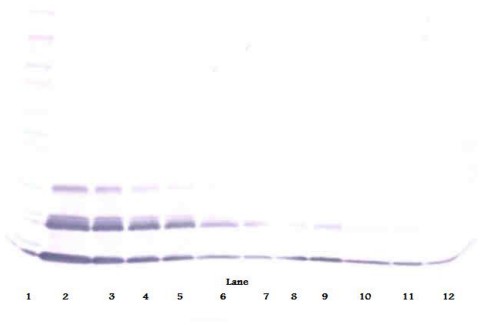
**Application Note** \* The dilutions indicate recommended starting dilutions and the optimal dilutions or concentrations should be determined by the scientist.

### Properties

Form	Liquid
Purification	Purified by affinity chromatography.
Buffer	PBS (pH 7.2)
Concentration	1 mg/ml
Storage instruction	Aliquot and store in the dark at 2-8°C. Keep protected from prolonged exposure to light. Avoid repeated freeze/thaw cycles. Suggest spin the vial prior to opening. The antibody solution should be gently mixed before use.
Note	For laboratory research only, not for drug, diagnostic or other use.

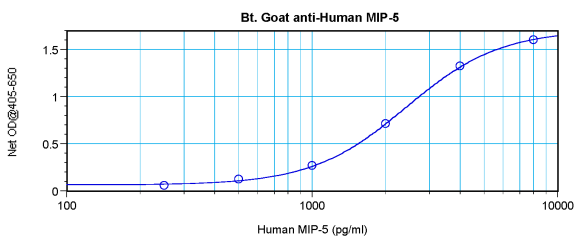
Database links	<a href="#">GeneID: 6359 Human</a> <a href="#">Swiss-port # Q16663 Human</a>
Gene Symbol	CCL15
Gene Full Name	chemokine (C-C motif) ligand 15
Background	This gene is located in a cluster of similar genes in the same region of chromosome 17. These genes encode CC cytokines, which are secreted proteins characterized by two adjacent cysteines. The product of this gene is chemotactic for T cells and monocytes, and acts through C-C chemokine receptor type 1 (CCR1). The proprotein is further processed into numerous smaller functional peptides. Naturally-occurring readthrough transcripts occur from this gene into the downstream gene, CCL14 (chemokine (C-C motif) ligand 14). [provided by RefSeq, Jan 2013]
Function	Chemotactic factor that attracts T-cells and monocytes, but not neutrophils, eosinophils, or B-cells. Acts mainly via CC chemokine receptor CCR1. Also binds to CCR3. CCL15(22-92), CCL15(25-92) and CCL15(29-92) are more potent chemoattractants than the small-inducible cytokine A15. [UniProt]
Calculated Mw	12 kDa

Images



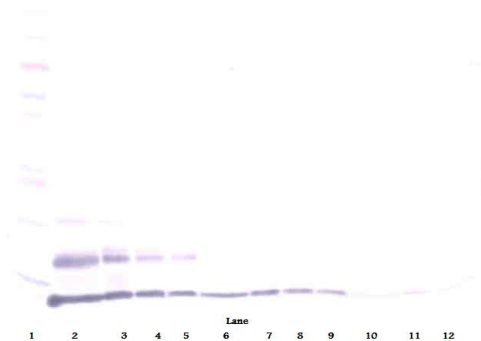
ARG66040 anti-CCL15 antibody (Biotin) WB image

Western blot: 250 - 0.24 ng of Human MIP-5 stained with ARG66040 anti-CCL15 antibody (Biotin), under non-reducing conditions.



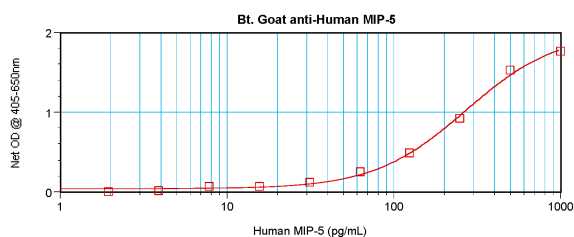
ARG66040 anti-CCL15 antibody (Biotin) standard curve image

Direct ELISA: ARG66040 anti-CCL15 antibody (Biotin) at 0.25 - 1.0 µg/ml results of a typical standard run with optical density reading at 405 - 650 nm.



ARG66040 anti-CCL15 antibody (Biotin) WB image

Western blot: 250 - 0.24 ng of Human MIP-5 stained with ARG66040 anti-CCL15 antibody (Biotin), under reducing conditions.



ARG66040 anti-CCL15 antibody (Biotin) standard curve image

Sandwich ELISA: ARG66040 anti-CCL15 antibody (Biotin) as a detection antibody at 0.25 - 1.0 µg/ml combined with ARG66039 anti-CL15 antibody as a capture antibody. Results of a typical standard run with optical density reading at 405 - 650 nm.