

ARG66035 anti-CCL9 / MCP1 gamma antibody

Package: 50 µg
Store at: -20°C

Summary

Product Description	Rabbit Polyclonal antibody recognizes CCL9 / MCP1 gamma
Tested Reactivity	Ms, Rat
Tested Application	ELISA, WB
Host	Rabbit
Clonality	Polyclonal
Isotype	IgG
Target Name	CCL9 / MCP1 gamma
Species	Mouse
Immunogen	E. coli derived recombinant Mouse CCL9 / MCP1 gamma. (QITHATETKE VQSSLKAQQG LEIEMFHMGG QDSSDCCLSY NSRIQCSRFI GYFPTSGGCT RPGIIFISKR GFQVCANPSD RRVQRCIERL EQNSQPRTYK Q)
Conjugation	Un-conjugated
Alternate Names	Scya10; MIP-1-gamma; Small-inducible cytokine A9; MRP-2; Macrophage inflammatory protein-related protein 2; Macrophage inflammatory protein 1-gamma; 30-101; Scya9; CCF18; C-C motif chemokine 9; 31-101; 29-101

Application Instructions

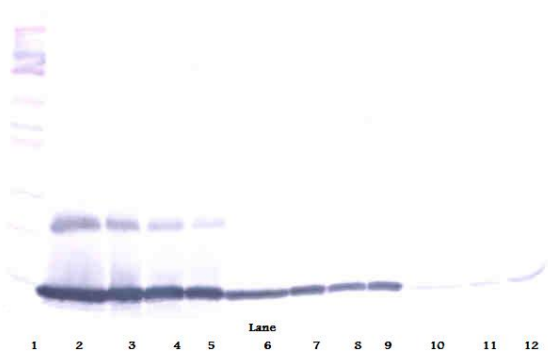
Application table	Application	Dilution
	ELISA	Sandwich: 0.5 - 2.0 µg/ml with ARG66036 as a detection antibody
	WB	0.1 - 0.2 µg/ml
Application Note	* The dilutions indicate recommended starting dilutions and the optimal dilutions or concentrations should be determined by the scientist.	

Properties

Form	Liquid
Purification	Affinity purification with immunogen.
Buffer	PBS (pH 7.2)
Concentration	1 mg/ml
Storage instruction	For continuous use, store undiluted antibody at 2-8°C for up to a week. For long-term storage, aliquot and store at -20°C or below. Storage in frost free freezers is not recommended. Avoid repeated freeze/thaw cycles. Suggest spin the vial prior to opening. The antibody solution should be gently mixed before use.
Note	For laboratory research only, not for drug, diagnostic or other use.

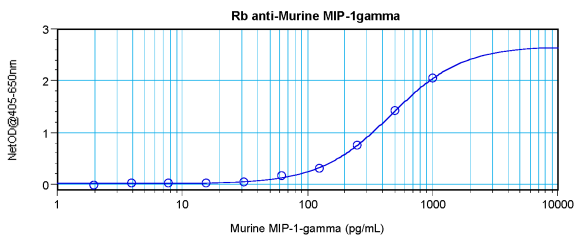
Database links	GeneID: 20308 Mouse Swiss-port # P51670 Mouse
Gene Symbol	Ccl9
Gene Full Name	chemokine (C-C motif) ligand 9
Function	Monokine with inflammatory, pyrogenic and chemokinetic properties. Circulates at high concentrations in the blood of healthy animals. Binding to a high-affinity receptor activates calcium release in neutrophils. It also inhibits colony formation of bone marrow myeloid immature progenitors. [UniProt]
Calculated Mw	14 kDa

Images



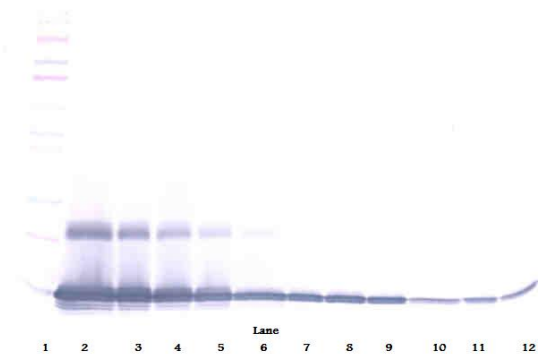
ARG66035 anti-CCL9 / MCP1 gamma antibody WB image

Western blot: 250 - 0.24 ng of Mouse MIP-1 γ stained with ARG66035 anti-CCL9 / MCP1 gamma antibody, under reducing conditions.



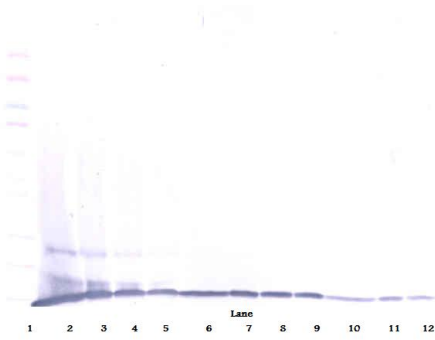
ARG66035 anti-CCL9 / MCP1 gamma antibody standard curve image

Sandwich ELISA: ARG66035 anti-CCL9 / MCP1 gamma antibody as a capture antibody at 0.5 - 2.0 μ g/ml combined with ARG66036 anti-CCL9 / MCP1 gamma antibody (Biotin) as a detection antibody. Results of a typical standard run with optical density reading at 405 - 650 nm.



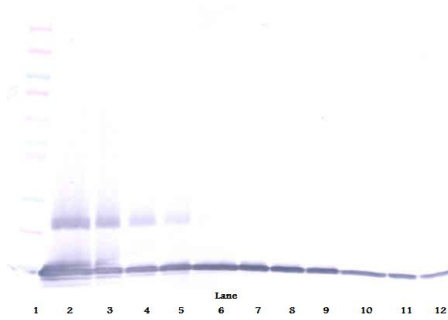
ARG66035 anti-CCL9 / MCP1 gamma antibody WB image

Western blot: 250 - 0.24 ng of Mouse MIP-1 γ stained with ARG66035 anti-CCL9 / MCP1 gamma antibody, under non-reducing conditions.



ARG66035 anti-CCL9 / MCP1 gamma antibody WB image

Western blot: 250 - 0.24 ng of Mouse MIP-1 γ stained with ARG66035 anti-CCL9 / MCP1 gamma antibody, under reducing conditions.



ARG66035 anti-CCL9 / MCP1 gamma antibody WB image

Western blot: 250 - 0.24 ng of Mouse MIP-1 γ stained with ARG66035 anti-CCL9 / MCP1 gamma antibody, under non-reducing conditions.