

ARG66032 anti-CX3CL1 antibody (Biotin)

Package: 50 µg
Store at: 4°C

Summary

| | |
|---------------------|--|
| Product Description | Biotin-conjugated Rabbit Polyclonal antibody recognizes CX3CL1 |
| Tested Reactivity | Hu |
| Tested Application | ELISA, WB |
| Host | Rabbit |
| Clonality | Polyclonal |
| Isotype | IgG |
| Target Name | CX3CL1 |
| Species | Human |
| Immunogen | E. coli derived recombinant Human CX3CL1. (QHHGVTKCNI TCSKMTSKIP VALLIHYQQN QASCGKRAII LETRQHRLFC ADPKEQWVKD AMQHLDLRQAA ALTRNG) |
| Conjugation | Biotin |
| Alternate Names | neurotactin; CXC3; C3Xkine; NTN; NTT; C-X3-C motif chemokine 1; CXC3C; Neurotactin; ABCD-3; SCYD1; Fractalkine; Small-inducible cytokine D1; CX3C membrane-anchored chemokine; fractalkine |

Application Instructions

| Application table | Application | Dilution |
|-------------------|--|--|
| | ELISA | Direct: 0.25 - 1.0 µg/ml Sandwich: 0.25 - 1.0 µg/ml with ARG66031 as a capture antibody |
| | WB | 0.1 - 0.2 µg/ml |
| Application Note | * The dilutions indicate recommended starting dilutions and the optimal dilutions or concentrations should be determined by the scientist. | |

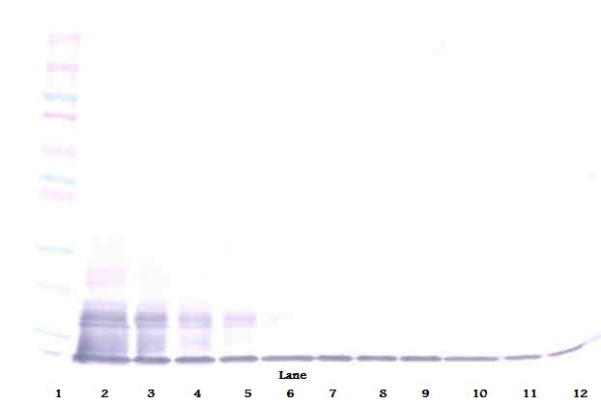
Properties

| | |
|---------------------|--|
| Form | Liquid |
| Purification | Purified by affinity chromatography. |
| Buffer | PBS (pH 7.2) |
| Concentration | 1 mg/ml |
| Storage instruction | Aliquot and store in the dark at 2-8°C. Keep protected from prolonged exposure to light. Avoid repeated freeze/thaw cycles. Suggest spin the vial prior to opening. The antibody solution should be gently mixed before use. |
| Note | For laboratory research only, not for drug, diagnostic or other use. |

Bioinformation

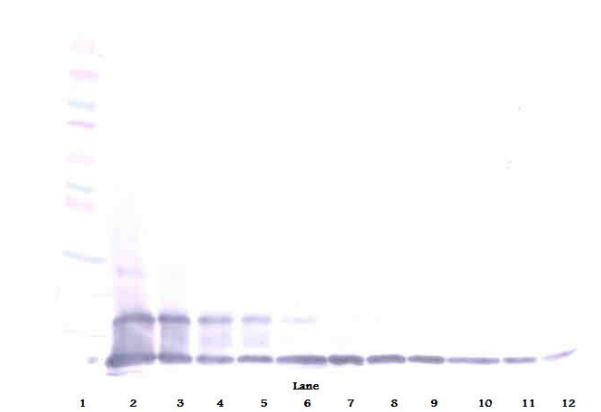
| | |
|----------------|---|
| Database links | GeneID: 6376 Human Swiss-port # P78423 Human |
| Gene Symbol | CX3CL1 |
| Gene Full Name | chemokine (C-X3-C motif) ligand 1 |
| Function | The soluble form is chemotactic for T-cells and monocytes, but not for neutrophils. The membrane-bound form promotes adhesion of those leukocytes to endothelial cells. May play a role in regulating leukocyte adhesion and migration processes at the endothelium. Binds to CX3CR1. [UniProt] |
| Calculated Mw | 42 kDa |
| PTM | A soluble short 95 kDa form may be released by proteolytic cleavage from the long membrane-anchored form. O-glycosylated with core 1 or possibly core 8 glycans. |

Images



ARG66032 anti-CX3CL1 antibody (Biotin) WB image

Western blot: 250 - 0.24 ng of Human Fractalkine stained with ARG66032 anti-CX3CL1 antibody (Biotin), under non-reducing conditions.



ARG66032 anti-CX3CL1 antibody (Biotin) WB image

Western blot: 250 - 0.24 ng of Human Fractalkine stained with ARG66032 anti-CX3CL1 antibody (Biotin), under reducing conditions.