

ARG66026 anti-IL17D antibody (Biotin)

Package: 50 µg
Store at: 4°C

Summary

Product Description	Biotin-conjugated Rabbit Polyclonal antibody recognizes IL17D
Tested Reactivity	Hu
Tested Application	ELISA, WB
Host	Rabbit
Clonality	Polyclonal
Isotype	IgG
Target Name	IL17D
Species	Human
Immunogen	E. coli derived recombinant Human IL17D. (APRAGRPPAR PRGCADRPEE LLEQLYGRLA AGVLSAFHHT LQLGPREQAR NASCPAGGRP ADRFRPPTN LRVSPWAYR ISYDPARYPR YLPEAYCLCR GCLTGLFGEE DVRFRSAPVY MPTVVLRRTP ACAGGRSVYT EAYVTIPVGC TCVPEPEKDA DSINSSIDKQ GAKLLGPND APAGP)
Conjugation	Biotin
Alternate Names	IL17D; Interleukin 17D; IL-17D; IL-27; Interleukin-17D; FLJ30846; IL27; Interleukin 27; Interleukin-27

Application Instructions

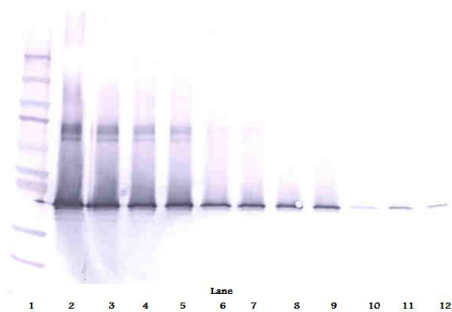
Application table	Application	Dilution
	ELISA	Direct: ~ 1.0 µg/ml Sandwich: 0.25 - 1.0 µg/ml with ARG66025 as a capture antibody
	WB	0.1 - 0.2 µg/ml
Application Note	* The dilutions indicate recommended starting dilutions and the optimal dilutions or concentrations should be determined by the scientist.	

Properties

Form	Liquid
Purification	Purified by affinity chromatography.
Buffer	PBS (pH 7.2)
Concentration	1 mg/ml
Storage instruction	Aliquot and store in the dark at 2-8°C. Keep protected from prolonged exposure to light. Avoid repeated freeze/thaw cycles. Suggest spin the vial prior to opening. The antibody solution should be gently mixed before use.
Note	For laboratory research only, not for drug, diagnostic or other use.

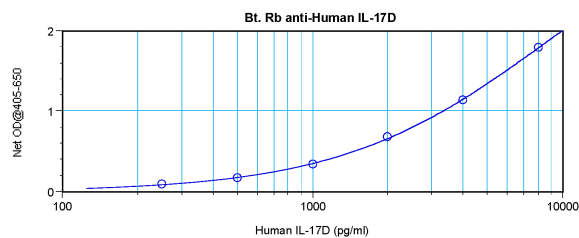
Database links	GeneID: 53342 Human Swiss-port # Q8TAD2 Human
Gene Symbol	IL17D
Gene Full Name	interleukin 17D
Background	The protein encoded by this gene is a cytokine that shares the sequence similarity with IL17. The treatment of endothelial cells with this cytokine has been shown to stimulate the production of other cytokines including IL6, IL8 and CSF2/ GM-CSF. The increased expression of IL8 induced by this cytokine was found to be NF-kappa B-dependent. [provided by RefSeq, Jul 2008]
Function	Induces expression of IL-6, IL-8, and GM-CSF from endothelial cells. [UniProt]
Calculated Mw	22 kDa

Images



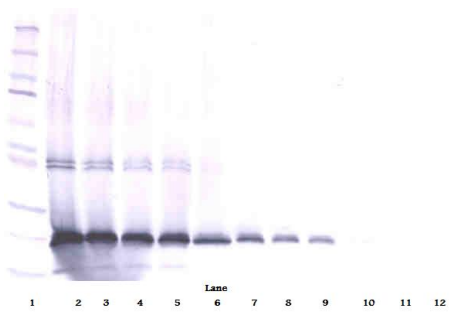
ARG66026 anti-IL17D antibody (Biotin) WB image

Western blot: 250 - 0.24 ng of Human IL-17D stained with ARG66026 anti-IL17D antibody (Biotin), under non-reducing conditions.



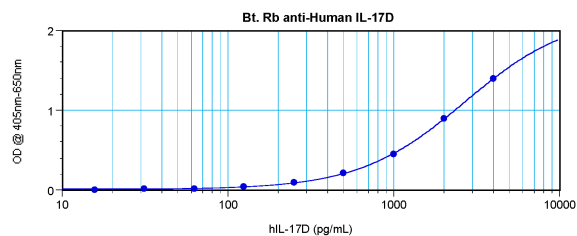
ARG66026 anti-IL17D antibody (Biotin) standard curve image

Direct ELISA: ARG66026 anti-IL17D antibody (Biotin) at ~ 1.0 µg/ml results of a typical standard run with optical density reading at 405 - 650 nm.



ARG66026 anti-IL17D antibody (Biotin) WB image

Western blot: 250 - 0.24 ng of Human IL-17D stained with ARG66026 anti-IL17D antibody (Biotin), under reducing conditions.



ARG66026 anti-IL17D antibody (Biotin) standard curve image

Sandwich ELISA: ARG66026 anti-IL17D antibody (Biotin) as a detection antibody at 0.25 - 1.0 µg/ml combined with ARG66025 anti-IL17D antibody as a capture antibody. Results of a typical standard run with optical density reading at 405 - 650 nm.