

ARG66025 anti-IL17D antibody

Package: 50 µg
Store at: -20°C

Summary

Product Description	Rabbit Polyclonal antibody recognizes IL17D
Tested Reactivity	Hu
Tested Application	ELISA, IHC-P, WB
Host	Rabbit
Clonality	Polyclonal
Isotype	IgG
Target Name	IL17D
Species	Human
Immunogen	E. coli derived recombinant Human IL17D. (APRAGRPAR PRGCADRPEE LLEQLYGLA AGVLSAFHHT LQLGPREQAR NASCPAGGRP ADRFRPPTN LRSVSPWAYR ISYDPARYPR YLPEAYCLCR GCLTGLFGEE DVRFRSAPVY MPTVVLRRTP ACAGGRSVYT EAYVTIPVGC TCVPEPEKDA DSINSSIDKQ GAKLLGPND APAGP)
Conjugation	Un-conjugated
Alternate Names	IL17D; Interleukin 17D; IL-17D; IL-27; Interleukin-17D; FLJ30846; IL27; Interleukin 27; Interleukin-27

Application Instructions

Application table	Application	Dilution
	ELISA	Sandwich: 0.5 - 2.0 µg/ml with ARG66026 as a detection antibody
	IHC-P	2.5 µg/ml
	WB	0.1 - 0.2 µg/ml
Application Note	* The dilutions indicate recommended starting dilutions and the optimal dilutions or concentrations should be determined by the scientist.	

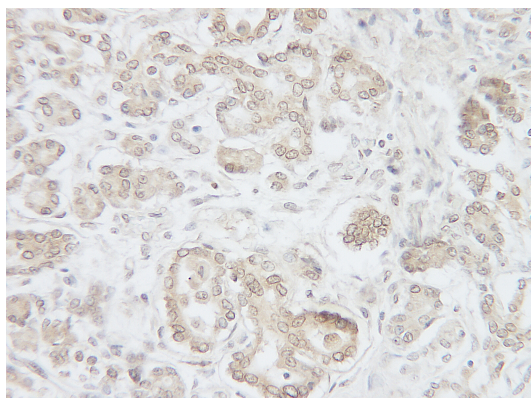
Properties

Form	Liquid
Purification	Affinity purification with immunogen.
Buffer	PBS (pH 7.2)
Concentration	1 mg/ml
Storage instruction	For continuous use, store undiluted antibody at 2-8°C for up to a week. For long-term storage, aliquot and store at -20°C or below. Storage in frost free freezers is not recommended. Avoid repeated freeze/thaw cycles. Suggest spin the vial prior to opening. The antibody solution should be gently mixed before use.
Note	For laboratory research only, not for drug, diagnostic or other use.

Bioinformation

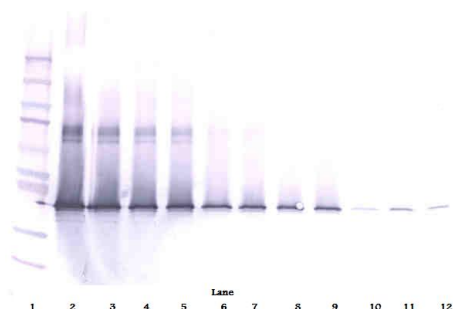
Database links	GeneID: 53342 Human Swiss-port # Q8TAD2 Human
Gene Symbol	IL17D
Gene Full Name	interleukin 17D
Background	The protein encoded by this gene is a cytokine that shares the sequence similarity with IL17. The treatment of endothelial cells with this cytokine has been shown to stimulate the production of other cytokines including IL6, IL8 and CSF2/ GM-CSF. The increased expression of IL8 induced by this cytokine was found to be NF-kappa B-dependent. [provided by RefSeq, Jul 2008]
Function	Induces expression of IL-6, IL-8, and GM-CSF from endothelial cells. [UniProt]
Calculated Mw	22 kDa

Images



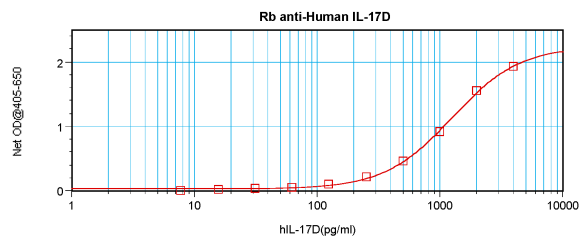
ARG66025 anti-IL17D antibody IHC-P image

Immunohistochemistry: Formalin-fixed and paraffin-embedded sections of Human normal pancreas. The recommended ARG66025 anti-IL17D antibody concentration is 2.5 µg/ml for two hours at RT. An HRP-labeled polymer detection system was used with a DAB chromogen.



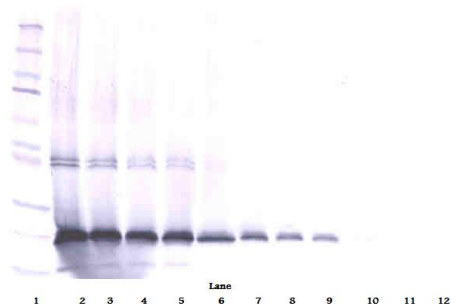
ARG66025 anti-IL17D antibody WB image

Western blot: 250 - 0.24 ng of Human IL-17D stained with ARG66025 anti-IL17D antibody, under non-reducing conditions.



ARG66025 anti-IL17D antibody standard curve image

Sandwich ELISA: ARG66025 anti-IL17D antibody as a capture antibody at 0.5 - 2.0 $\mu\text{g/ml}$ combined with ARG66026 anti-IL17D antibody (Biotin) as a detection antibody. Results of a typical standard run with optical density reading at 405 - 650 nm.



ARG66025 anti-IL17D antibody WB image

Western blot: 250 - 0.24 ng of Human IL-17D stained with ARG66025 anti-IL17D antibody, under reducing conditions.