

ARG66007 anti-Lymphotactin antibody (Biotin)

Package: 50 µg
Store at: 4°C

Summary

Product Description	Biotin-conjugated Rabbit Polyclonal antibody recognizes Lymphotactin
Tested Reactivity	Hu
Tested Application	ELISA, WB
Host	Rabbit
Clonality	Polyclonal
Isotype	IgG
Target Name	Lymphotactin
Species	Human
Immunogen	E. coli derived recombinant Human Lymphotactin. (GSEVSDKRTC VSLTTQRLPV SRIKTYTITE GSLRAVIFIT KRGLKVCADP QATWVRDVVR SMDRKSNTRN NMIQTKPTGT QQSTNTAVTL TG)
Conjugation	Biotin
Alternate Names	Lymphotaxin; C motif chemokine 1; SCYC1; Cytokine SCM-1; Lymphotactin; Small-inducible cytokine C1; ATAC; SCM1A; SCM-1a; LPTN; XC chemokine ligand 1; SCM-1; SCM-1-alpha; SCM1; LTN

Application Instructions

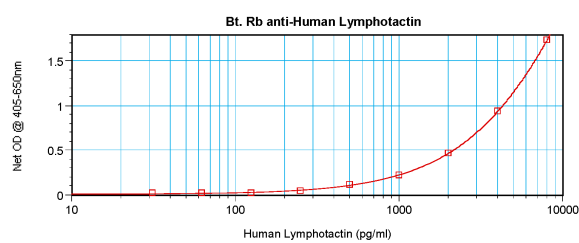
Application table	Application	Dilution
	ELISA	Direct: 0.25 - 1.0 µg/ml Sandwich: 0.25 - 1.0 µg/ml with ARG66006 as a capture antibody
	WB	0.1 - 0.2 µg/ml
Application Note	* The dilutions indicate recommended starting dilutions and the optimal dilutions or concentrations should be determined by the scientist.	

Properties

Form	Liquid
Purification	Purified by affinity chromatography.
Buffer	PBS (pH 7.2)
Concentration	1 mg/ml
Storage instruction	Aliquot and store in the dark at 2-8°C. Keep protected from prolonged exposure to light. Avoid repeated freeze/thaw cycles. Suggest spin the vial prior to opening. The antibody solution should be gently mixed before use.
Note	For laboratory research only, not for drug, diagnostic or other use.

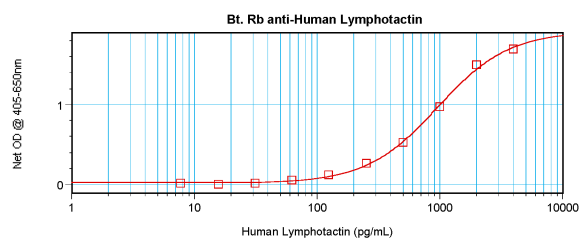
Database links	GeneID: 6375 Human Swiss-port # P47992 Human
Gene Symbol	XCL1
Gene Full Name	chemokine (C motif) ligand 1
Background	This antimicrobial gene encodes a member of the chemokine superfamily. Chemokines function in inflammatory and immunological responses, inducing leukocyte migration and activation. The encoded protein is a member of the C-chemokine subfamily, retaining only two of four cysteines conserved in other chemokines, and is thought to be specifically chemotactic for T cells. This gene and a closely related family member are located on the long arm of chromosome 1. [provided by RefSeq, Sep 2014]
Function	Chemotactic activity for lymphocytes but not for monocytes or neutrophils. [UniProt]
Calculated Mw	13 kDa

Images



ARG66007 anti-Lymphotactin antibody (Biotin) standard curve image

Direct ELISA: ARG66007 anti-Lymphotactin antibody (Biotin) at 0.25 - 1.0 µg/ml results of a typical standard run with optical density reading at 405 - 650 nm.



ARG66007 anti-Lymphotactin antibody (Biotin) standard curve image

Sandwich ELISA: ARG66007 anti-Lymphotactin antibody (Biotin) as a detection antibody at 0.25 - 1.0 µg/ml combined with ARG66006 anti-Lymphotactin antibody as a capture antibody. Results of a typical standard run with optical density reading at 405 - 650 nm.