

ARG66005 anti-CCL4 / MIP1 beta antibody (Biotin)

Package: 50 µg
Store at: 4°C

Summary

Product Description	Biotin-conjugated Rabbit Polyclonal antibody recognizes CCL4 / MIP1 beta
Tested Reactivity	Hu
Tested Application	ELISA, WB
Host	Rabbit
Clonality	Polyclonal
Isotype	IgG
Target Name	CCL4 / MIP1 beta
Species	Human
Immunogen	E. coli derived recombinant Human CCL4 / MCP1 beta. (APMGSDPPTA CCFSTARKL PHNFVVDYYE TSSLCSQPAV VFQTKRGKQV CADPSESWVQ EYVVDLELN)
Conjugation	Biotin
Alternate Names	SCYA4L; Lymphocyte activation gene 1 protein; MIP-1-beta; Macrophage inflammatory protein 1-beta; LAG-1; LAG1; CCL4L; Monocyte adherence-induced protein 5-alpha; Small-inducible cytokine A4-like; SCYA4L1; C-C motif chemokine 4-like; AT744.2

Application Instructions

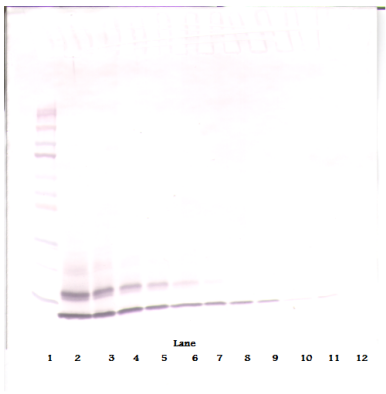
Application table	Application	Dilution
	ELISA	Direct: 0.25 - 1.0 µg/ml Sandwich: 0.25 - 1.0 µg/ml with ARG66004 as a capture antibody
	WB	0.1 - 0.2 µg/ml
Application Note	* The dilutions indicate recommended starting dilutions and the optimal dilutions or concentrations should be determined by the scientist.	

Properties

Form	Liquid
Purification	Purified by affinity chromatography.
Buffer	PBS (pH 7.2)
Concentration	1 mg/ml
Storage instruction	Aliquot and store in the dark at 2-8°C. Keep protected from prolonged exposure to light. Avoid repeated freeze/thaw cycles. Suggest spin the vial prior to opening. The antibody solution should be gently mixed before use.
Note	For laboratory research only, not for drug, diagnostic or other use.

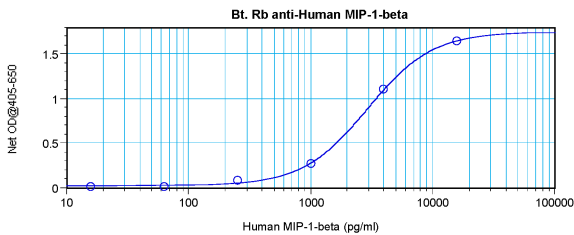
Gene Symbol	CCL4L1
Gene Full Name	chemokine (C-C motif) ligand 4-like 1
Background	This gene is one of several cytokine genes that are clustered on the q-arm of chromosome 17. Cytokines are a family of secreted proteins that function in inflammatory and immunoregulatory processes. The protein encoded by this family member is similar to the chemokine (C-C motif) ligand 4 product, which inhibits HIV entry by binding to the cellular receptor CCR5. The copy number of this gene varies among individuals, where most individuals have one to five copies. Alternative splicing of this gene results in multiple transcript variants. [provided by RefSeq, Apr 2014]
Function	Chemokine that induces chemotaxis of cells expressing CCR5 or CCR1. Inhibits HIV replication in peripheral blood monocytes that express CCR5. [UniProt]
Calculated Mw	10 kDa
PTM	N-terminal processed form MIP-1-beta(3-69) is produced by proteolytic cleavage after secretion from peripheral blood lymphocytes.

Images



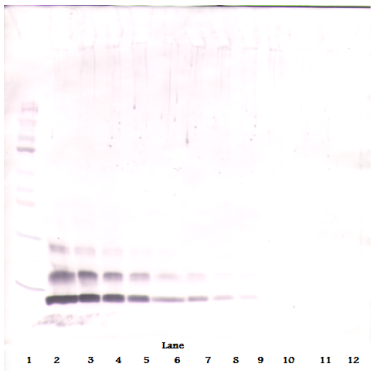
ARG66005 anti-CCL4 / MIP1 beta antibody (Biotin) WB image

Western blot: 250 - 0.24 ng of Human MIP-1β stained with ARG66005 anti-CCL4 / MIP1 beta antibody (Biotin), under non-reducing conditions.



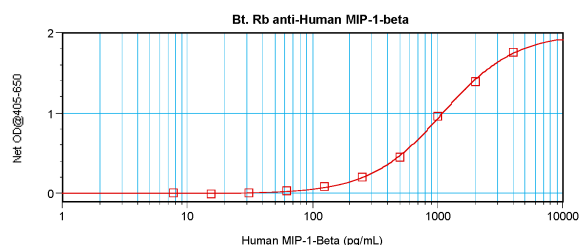
ARG66005 anti-CCL4 / MIP1 beta antibody (Biotin) standard curve image

Direct ELISA: ARG66005 anti-CCL4 / MIP1 beta antibody (Biotin) at 0.25 - 1.0 µg/ml results of a typical standard run with optical density reading at 405 - 650 nm.



ARG66005 anti-CCL4 / MIP1 beta antibody (Biotin) WB image

Western blot: 250 - 0.24 ng of Human MIP-1β stained with ARG66005 anti-CCL4 / MIP1 beta antibody (Biotin), under reducing conditions.



ARG66005 anti-CCL4 / MIP1 beta antibody (Biotin) standard curve image

Sandwich ELISA: ARG66005 anti-CCL4 / MIP1 beta antibody (Biotin) as a detection antibody at 0.25 - 1.0 µg/ml combined with ARG66004 anti-CCL4 / MCP1 beta antibody as a capture antibody. Results of a typical standard run with optical density reading at 405 - 650 nm.