

ARG65986 anti-CCL16 / LEC antibody [1.2_5G3-1D7]

Package: 100 µg
Store at: -20°C

Summary

Product Description	Mouse Monoclonal antibody [1.2_5G3-1D7] recognizes CCL16 / LEC
Tested Reactivity	Hu
Tested Application	ELISA, Neut, WB
Host	Mouse
Clonality	Monoclonal
Clone	1.2_5G3-1D7
Isotype	IgG1, kappa
Target Name	CCL16 / LEC
Species	Human
Immunogen	E. coli derived recombinant Human CCL16 / LEC. (QPKVPEWVNT PSTCCLKYYE KVLPRRLVVG YRKALNCHLP AIIFVTKRNR EVCTNPNDWW VQEYIKDPNL PLLPTNLST VKIITAKNGQ PQLLSQ)
Conjugation	Un-conjugated
Alternate Names	CKb12; HCC-4; LEC; Monotactin-1; SCYA16; Chemokine LEC; MTN-1; SCYL4; Mtn-1; Lymphocyte and monocyte chemoattractant; Small-inducible cytokine A16; Liver-expressed chemokine; IL-10-inducible chemokine; C-C motif chemokine 16; NCC4; LCC-1; ILINCK; LMC; Chemokine CC-4; NCC-4

Application Instructions

Application table	Application	Dilution
	ELISA	Sandwich: 2.0 - 4.0 µg/ml combined with a detection antibody
	Neut	1.0 - 5.0 µg/ml (To yield [ND50] of the biological activity of Human LEC (100 ng/ml))
	WB	0.20 - 0.40 µg/ml
Application Note	* The dilutions indicate recommended starting dilutions and the optimal dilutions or concentrations should be determined by the scientist.	

Properties

Form	Liquid
Purification	Purification with Protein G.
Buffer	PBS (pH 7.2)
Concentration	1 mg/ml
Storage instruction	For continuous use, store undiluted antibody at 2-8°C for up to a week. For long-term storage, aliquot and store at -20°C or below. Storage in frost free freezers is not recommended. Avoid repeated freeze/thaw cycles. Suggest spin the vial prior to opening. The antibody solution should be gently mixed

before use.

Note

For laboratory research only, not for drug, diagnostic or other use.

Bioinformation

Database links

[GeneID: 6360 Human](#)

[Swiss-port # O15467 Human](#)

Gene Symbol

CCL16

Gene Full Name

chemokine (C-C motif) ligand 16

Background

This gene is one of several cytokine genes clustered on the q-arm of chromosome 17. Cytokines are a family of secreted proteins involved in immunoregulatory and inflammatory processes. The CC cytokines are proteins characterized by two adjacent cysteines. The cytokine encoded by this gene displays chemotactic activity for lymphocytes and monocytes but not for neutrophils. This cytokine also shows a potent myelosuppressive activity and suppresses proliferation of myeloid progenitor cells. The expression of this gene is upregulated by IL-10. [provided by RefSeq, Jul 2008]

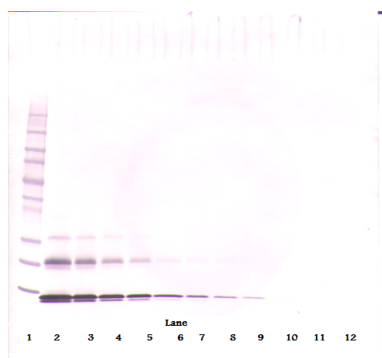
Function

Shows chemotactic activity for lymphocytes and monocytes but not neutrophils. Also shows potent myelosuppressive activity, suppresses proliferation of myeloid progenitor cells. Recombinant SCYA16 shows chemotactic activity for monocytes and THP-1 monocytes, but not for resting lymphocytes and neutrophils. Induces a calcium flux in THP-1 cells that were desensitized by prior expression to RANTES. [UniProt]

Calculated Mw

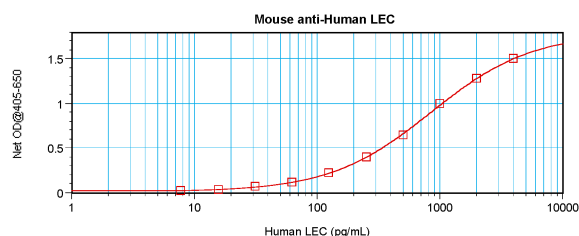
14 kDa

Images



ARG65986 anti-CCL16 / LEC antibody [1.2_5G3-1D7] WB image

Western blot: 250 - 0.24 ng (left to right) of Human LEC stained with ARG65986 anti-CCL16 / LEC antibody [1.2_5G3-1D7], under non-reducing conditions.



ARG65986 anti-CCL16 / LEC antibody [1.2_5G3-1D7] standard curve image

Sandwich ELISA: ARG65986 anti-CCL16 / LEC antibody [1.2_5G3-1D7] as a capture antibody at 2.0 - 4.0 µg/ml combined with anti-CCL16 / LEC antibody (Biotin) as a detection antibody at ~ 0.5 - 1.0 µg/ml. Results of a typical standard run with optical density reading at 405 - 650 nm.