

ARG65985 anti-IL3 antibody [5A4-1-16]

Package: 100 µg
Store at: -20°C

Summary

Product Description	Mouse Monoclonal antibody [5A4-1-16] recognizes IL3
Tested Reactivity	Hu
Tested Application	ELISA, Neut, WB
Host	Mouse
Clonality	Monoclonal
Clone	5A4-1-16
Isotype	IgG
Target Name	IL3
Species	Human
Immunogen	E. coli derived recombinant Human IL3. (APMTQTTSK TSWVNCSNMI DEITHLKQP PLPLDFNNL NGEDQDILME>NNLRRPNLEA FNRAVKSLQN ASAIESILKN LLPCLPLATA APTRHPIHIK DGDWNEFRRK LTFYKLTLEN AQAQQTTLSL AIF)
Conjugation	Un-conjugated
Alternate Names	MCGF; Mast cell growth factor; P-cell-stimulating factor; Hematopoietic growth factor; IL-3; Interleukin-3; Multipotential colony-stimulating factor; MULTI-CSF

Application Instructions

Application table	Application	Dilution
	ELISA	Sandwich: 4.0 - 8.0 µg/ml with ARG65999 as a detection antibody
	Neut	0.007 - 0.010 µg/ml (To yield [ND50] of the biological activity of Human IL-3 (1.0 ng/ml))
	WB	0.25 - 0.50 µg/ml
Application Note	* The dilutions indicate recommended starting dilutions and the optimal dilutions or concentrations should be determined by the scientist.	

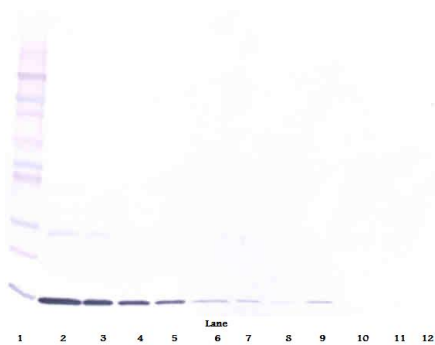
Properties

Form	Liquid
Purification	Purification with Protein G.
Buffer	PBS (pH 7.2)
Concentration	1 mg/ml
Storage instruction	For continuous use, store undiluted antibody at 2-8°C for up to a week. For long-term storage, aliquot and store at -20°C or below. Storage in frost free freezers is not recommended. Avoid repeated freeze/thaw cycles. Suggest spin the vial prior to opening. The antibody solution should be gently mixed before use.

Bioinformation

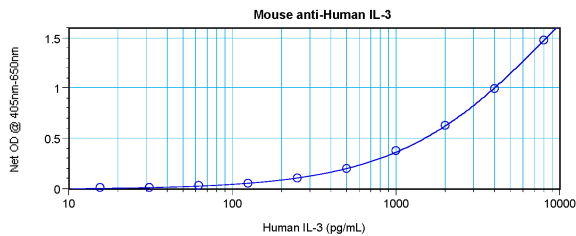
Database links	GeneID: 3562 Human Swiss-port # P08700 Human
Gene Symbol	IL3
Gene Full Name	interleukin 3
Background	The protein encoded by this gene is a potent growth promoting cytokine. This cytokine is capable of supporting the proliferation of a broad range of hematopoietic cell types. It is involved in a variety of cell activities such as cell growth, differentiation and apoptosis. This cytokine has been shown to also possess neurotrophic activity, and it may be associated with neurologic disorders. [provided by RefSeq, Jul 2008]
Function	Granulocyte/macrophage colony-stimulating factors are cytokines that act in hematopoiesis by controlling the production, differentiation, and function of 2 related white cell populations of the blood, the granulocytes and the monocytes-macrophages. This CSF induces granulocytes, macrophages, mast cells, stem cells, erythroid cells, eosinophils and megakaryocytes. [UniProt]
Calculated Mw	17 kDa

Images



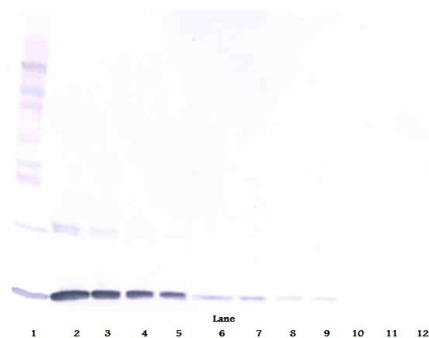
ARG65985 anti-IL3 antibody [5A4-1-16] WB image

Western blot: 250 - 0.24 ng (left to right) of Human IL-3 stained with ARG65985 anti-IL3 antibody [5A4-1-16], under non-reducing conditions.



ARG65985 anti-IL3 antibody [5A4-1-16] standard curve image

Sandwich ELISA: ARG65985 anti-IL3 antibody [5A4-1-16] as a capture antibody at 4.0 - 8.0 µg/ml combined with ARG65999 anti-IL3 antibody (Biotin) as a detection antibody at ~ 0.50 - 1.0 µg/ml. Results of a typical standard run with optical density reading at 405 - 650 nm.



ARG65985 anti-IL3 antibody [5A4-1-16] WB image

Western blot: 250 - 0.24 ng (left to right) of Human IL-3 stained with ARG65985 anti-IL3 antibody [5A4-1-16], under reducing conditions.