

ARG65858 anti-Granzyme B antibody [SQab1712]

Package: 100 µl, 50 µl
Store at: -20°C

Summary

Product Description	Recombinant Rabbit Monoclonal antibody [SQab1712] recognizes Granzyme B
Tested Reactivity	Hu
Tested Application	IHC-P
Host	Rabbit
Clonality	Monoclonal
Clone	SQab1712
Isotype	IgG
Target Name	Granzyme B
Species	Human
Immunogen	Synthetic peptide around aa. 100-200 of Human Granzyme B.
Conjugation	Un-conjugated
Alternate Names	EC 3.4.21.79; CTLA-1; CSP-B; Granzyme B; CTLA1; CCPI; CGL-1; CGL1; Cytotoxic T-lymphocyte proteinase 2; T-cell serine protease 1-3E; HLP; CTSG1; in-2; Cathepsin G-like 1; SECT; Granzyme-2; Human lymphocyte protein; C11; CSPB; Lymphocyte protease

Application Instructions

Application table	Application	Dilution
	IHC-P	1:100 - 1:250
Application Note	IHC-P: Antigen Retrieval: Boil tissue section in Tris/EDTA buffer (pH 9.0). * The dilutions indicate recommended starting dilutions and the optimal dilutions or concentrations should be determined by the scientist.	

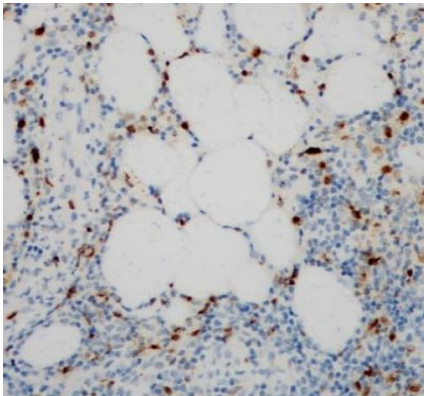
Properties

Form	Liquid
Purification	Purification with Protein A.
Buffer	PBS, 0.01% Sodium azide, 40% Glycerol and 0.05% BSA.
Preservative	0.01% Sodium azide
Stabilizer	40% Glycerol and 0.05% BSA
Storage instruction	For continuous use, store undiluted antibody at 2-8°C for up to a week. For long-term storage, aliquot and store at -20°C. Storage in frost free freezers is not recommended. Avoid repeated freeze/thaw cycles. Suggest spin the vial prior to opening. The antibody solution should be gently mixed before use.
Note	For laboratory research only, not for drug, diagnostic or other use.

Bioinformation

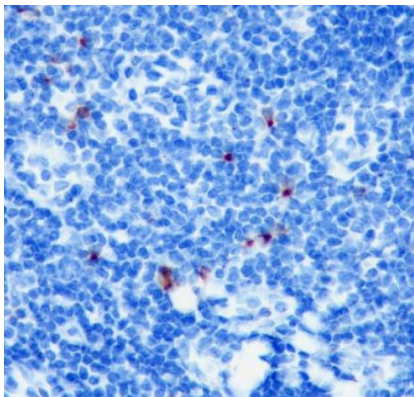
Database links	GeneID: 3002 Human Swiss-port # P10144 Human
Gene Symbol	GZMB
Gene Full Name	granzyme B (granzyme 2, cytotoxic T-lymphocyte-associated serine esterase 1)
Background	Granzyme B is a member of the granzyme subfamily of proteins, part of the peptidase S1 family of serine proteases. The encoded preproprotein is secreted by natural killer (NK) cells and cytotoxic T lymphocytes (CTLs) and proteolytically processed to generate the active protease, which induces target cell apoptosis. This protein also processes cytokines and degrades extracellular matrix proteins, and these roles are implicated in chronic inflammation and wound healing. Expression of this gene may be elevated in human patients with cardiac fibrosis. [provided by RefSeq, Sep 2016]
Function	Granzyme B is necessary for target cell lysis in cell-mediated immune responses. It cleaves after Asp. Seems to be linked to an activation cascade of caspases (aspartate-specific cysteine proteases) responsible for apoptosis execution. Cleaves caspase-3, -7, -9 and 10 to give rise to active enzymes mediating apoptosis. [UniProt]
Highlight	Related products: Granzyme B antibodies ; Granzyme B ELISA Kits ; Anti-Rabbit IgG secondary antibodies ; Related news: Time to fight cancer by NK cells Examining CTL/NK-mediated cytotoxicity by ELISA Anti-SerpinB9 therapy, a new strategy for cancer therapy
Calculated Mw	28 kDa

Images



ARG65858 anti-Granzyme B antibody [SQab1712] IHC-P image

Immunohistochemistry: Formalin/PFA-fixed and paraffin-embedded sections of Human T-cell lymphoma tissue stained with ARG65858 anti-Granzyme B antibody [SQab1712] at 1:200 dilution. Antigen Retrieval: Boil tissue section in Tris/EDTA buffer (pH 9.0).



ARG65858 anti-Granzyme B antibody [SQab1712] IHC-P image

Immunohistochemistry: Formalin/PFA-fixed and paraffin-embedded sections of Human tonsil tissue stained with ARG65858 anti-Granzyme B antibody [SQab1712] at 1:200 dilution. Antigen Retrieval: Boil tissue section in Tris/EDTA buffer (pH 9.0).