

ARG65765 anti-Caspase 3 (pro) antibody

Package: 100 µl, 50 µl
Store at: -20°C

Summary

Product Description	Rabbit Polyclonal antibody recognizes Caspase 3 (pro)
Tested Reactivity	Hu, Ms
Tested Application	ICC/IF, IHC-P, WB
Specificity	This antibody recognizes full length Caspase 3 only.
Host	Rabbit
Clonality	Polyclonal
Isotype	IgG
Target Name	Caspase 3 (pro)
Species	Human
Immunogen	Synthetic peptide derived from Human pro Caspase 3.
Conjugation	Un-conjugated
Alternate Names	CASP3; Caspase 3; Apopain; CPP32; CPP32B; Caspase 3, Apoptosis-Related Cysteine Peptidase; Caspase 3, Apoptosis-Related Cysteine Protease; SREBP Cleavage Activity 1; Cysteine Protease CPP32; Protein Yama; EC 3.4.22.56; Caspase-3; CASP-3; CPP-32; SCA-1; Yama; PARP Cleavage Protease; Procaspase3; EC 3.4.22

Application Instructions

Application table	Application	Dilution
	ICC/IF	1:50 - 1:200
	IHC-P	1:50 - 1:200
	WB	1:500 - 1:2000
Application Note	* The dilutions indicate recommended starting dilutions and the optimal dilutions or concentrations should be determined by the scientist.	
Positive Control	HeLa	
Observed Size	~ 34 kDa	

Properties

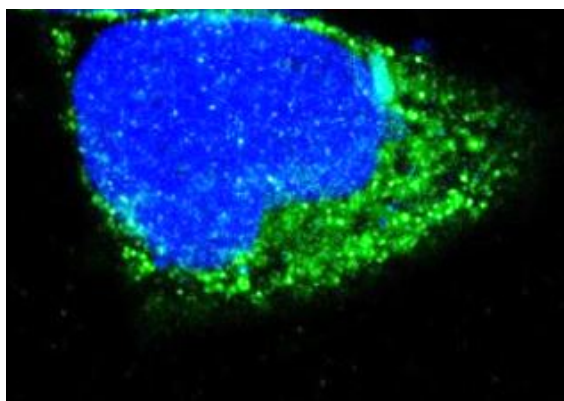
Form	Liquid
Purification	Affinity purified.
Buffer	PBS (pH 7.4), 150 mM NaCl, 0.02% Sodium azide and 50% Glycerol.
Preservative	0.02% Sodium azide
Stabilizer	50% Glycerol

Storage instruction	For continuous use, store undiluted antibody at 2-8°C for up to a week. For long-term storage, aliquot and store at -20°C. Storage in frost free freezers is not recommended. Avoid repeated freeze/thaw cycles. Suggest spin the vial prior to opening. The antibody solution should be gently mixed before use.
Note	For laboratory research only, not for drug, diagnostic or other use.

Bioinformation

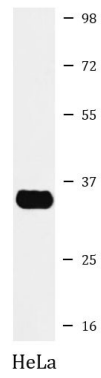
Database links	GeneID: 12367 Mouse GeneID: 836 Human Swiss-port # P42574 Human Swiss-port # P70677 Mouse
Gene Symbol	CASP3
Gene Full Name	caspase 3, apoptosis-related cysteine peptidase
Background	The protein encoded by this gene is a cysteine-aspartic acid protease that plays a central role in the execution-phase of cell apoptosis. The encoded protein cleaves and inactivates poly(ADP-ribose) polymerase while it cleaves and activates sterol regulatory element binding proteins as well as caspases 6, 7, and 9. This protein itself is processed by caspases 8, 9, and 10. It is the predominant caspase involved in the cleavage of amyloid-beta 4A precursor protein, which is associated with neuronal death in Alzheimer's disease. [provided by RefSeq, Aug 2017]
Function	Cleaves XRCC4 and phospholipid scramblase proteins XKR4, XKR8 and XKR9, leading to promote phosphatidylserine exposure on apoptotic cell surface. [UniProt]
Highlight	Related Antibody Duos and Panels: ARG30105 Apoptosis Marker Antibody Duo (Caspase3, PARP) ARG30110 Mitochondria/Caspase dependant Apoptosis Antibody Panel (Caspase3, Caspase9, Cytochrome c, PARP) (WB) Related products: Caspase 3 antibodies: Caspase 3 Duos / Panels:
Research Area	Cancer antibody; Cell Biology and Cellular Response antibody; Cell Death antibody; Neuroscience antibody; Apoptosis Marker antibody; Mitochondria/Caspase Dependant Apoptosis Marker antibody
Calculated Mw	32 kDa
PTM	Acetylation, Phosphoprotein, S-nitrosylation, Zymogen. [UniProt]
Cellular Localization	Cytoplasm. [UniProt]

Images



ARG65765 anti-Caspase 3 (pro) antibody ICC/IF image

Immunofluorescence: A673 cells stained with ARG65765 anti-Caspase 3 (pro) antibody.



ARG65765 anti-Caspase 3 (pro) antibody WB image

Western blot: HeLa cell lysate stained with ARG65765 anti-Caspase 3 (pro) antibody.