

ARG65764 anti-PKA gamma (catalytic subunit) antibody

Package: 100 µg
Store at: -20°C

Summary

Product Description	Rabbit Polyclonal antibody recognizes PKA gamma (catalytic subunit)
Tested Reactivity	Hu
Tested Application	IHC-P, WB
Host	Rabbit
Clonality	Polyclonal
Isotype	IgG
Target Name	PKA gamma (catalytic subunit)
Species	Human
Immunogen	Synthetic peptide corresponding to aa. 1-80 (N-terminus) of Human PKA gamma (catalytic subunit).
Conjugation	Un-conjugated
Alternate Names	PKA C-gamma; EC 2.7.11.11; cAMP-dependent protein kinase catalytic subunit gamma; KAPG; PKACg; BDPLT19

Application Instructions

Application table	Application	Dilution
	IHC-P	1:100 - 1:300
	WB	1:500 - 1:2000
Application Note	* The dilutions indicate recommended starting dilutions and the optimal dilutions or concentrations should be determined by the scientist.	

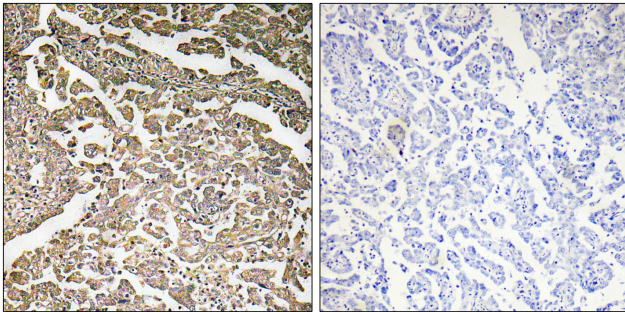
Properties

Form	Liquid
Purification	Affinity purification with immunogen.
Buffer	PBS, 0.02% Sodium azide, 50% Glycerol and 0.5% BSA
Preservative	0.02% Sodium azide
Stabilizer	50% Glycerol and 0.5% BSA
Concentration	1 mg/ml
Storage instruction	For continuous use, store undiluted antibody at 2-8°C for up to a week. For long-term storage, aliquot and store at -20°C. Storage in frost free freezers is not recommended. Avoid repeated freeze/thaw cycles. Suggest spin the vial prior to opening. The antibody solution should be gently mixed before use.
Note	For laboratory research only, not for drug, diagnostic or other use.

Bioinformation

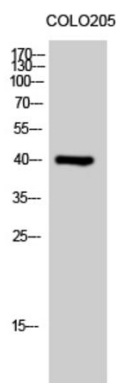
Database links	GeneID: 5568 Human Swiss-port # P22612 Human
Gene Symbol	PRKACG
Gene Full Name	protein kinase, cAMP-dependent, catalytic, gamma
Background	Cyclic AMP-dependent protein kinase (PKA) consists of two catalytic subunits and a regulatory subunit dimer. This gene encodes the gamma form of its catalytic subunit. The gene is intronless and is thought to be a retrotransposon derived from the gene for the alpha form of the PKA catalytic subunit. [provided by RefSeq, Jul 2008]
Function	Phosphorylates a large number of substrates in the cytoplasm and the nucleus. [UniProt]
Calculated Mw	40 kDa

Images



ARG65764 anti-PKA gamma (catalytic subunit) antibody IHC-P image

Immunohistochemistry: Paraffin-embedded Human ovary stained with ARG65764 anti-PKA gamma (catalytic subunit) antibody (left), or the same antibody pre-incubated with antigen (right).



ARG65764 anti-PKA gamma (catalytic subunit) antibody WB image

Western blot: COLO205 cell lysate stained with ARG65764 anti-PKA gamma (catalytic subunit) antibody.