

## ARG65748 anti-PDI antibody

Package: 50 µl  
Store at: -20°C

### Summary

Product Description	Rabbit Polyclonal antibody recognizes PDI
Tested Reactivity	Hu, Ms
Tested Application	ICC/IF, IHC-P, WB
Host	Rabbit
Clonality	Polyclonal
Isotype	IgG
Target Name	PDI
Species	Human
Immunogen	KLH-conjugated synthetic peptide corresponding to a region of Human PDI (NP_006840.2).
Conjugation	Un-conjugated
Alternate Names	PDA2; Pancreas-specific protein disulfide isomerase; PDIR; PDIP; PDI; Protein disulfide-isomerase A2; PDIP; EC 5.3.4.1

### Application Instructions

Application table	Application	Dilution
	ICC/IF	1:200
	IHC-P	1:200
	WB	1:500 - 1:1000
Application Note	* The dilutions indicate recommended starting dilutions and the optimal dilutions or concentrations should be determined by the scientist.	
Positive Control	HeLa, MCF-7, PANC, HepG2, HUVEC, NIH/3T3, L929, F9, Jurkat, A431, A549, Mouse liver tissue, Mouse kidney tissue, Mouse brain tissue, Human lung carcinoma tissue, Human kidney, Human brain, Human liver, Human colon carcinoma tissue	

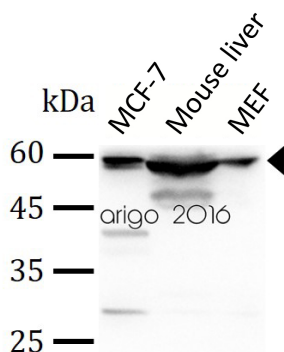
### Properties

Form	Liquid
Purification	Affinity purification with immunogen.
Buffer	TBS (pH 7.4), 0.05% Sodium azide, 40% Glycerol and 1% BSA.
Preservative	0.05% Sodium azide
Stabilizer	40% Glycerol and 1% BSA
Storage instruction	For continuous use, store undiluted antibody at 2-8°C for up to a week. For long-term storage, aliquot and store at -20°C. Storage in frost free freezers is not recommended. Avoid repeated freeze/thaw cycles. Suggest spin the vial prior to opening. The antibody solution should be gently mixed before use.

## Bioinformation

Database links	<a href="#">GeneID: 64714 Human</a>
	<a href="#">GeneID: 69191 Mouse</a>
	<a href="#">Swiss-port # D3Z6P0 Mouse</a>
	<a href="#">Swiss-port # Q13087 Human</a>
Gene Symbol	PDIA2
Gene Full Name	protein disulfide isomerase family A, member 2
Background	Protein disulfide isomerases (EC 5.3.4.1), such as PDIP, are endoplasmic reticulum (ER) resident proteins that catalyze protein folding and thiol-disulfide interchange reactions (Desilva et al., 1996 [PubMed 8561901]). [supplied by OMIM, Mar 2008]
Function	Acts as an intracellular estrogen-binding protein. May be involved in modulating cellular levels and biological functions of estrogens in the pancreas. May act as a chaperone that inhibits aggregation of misfolded proteins. [UniProt]
Calculated Mw	58 kDa
PTM	The disulfide-linked homodimer exhibits an enhanced chaperone activity. Glycosylated.

## Images



ARG65748 anti-PDI antibody WB image

Western blot: 30 µg of MCF-7, Mouse liver, and MEF lysates stained with ARG65748 anti-PDI antibody at 1:500 dilution.