

ARG65741 anti-Lipocalin 1 antibody

Package: 100 µg
Store at: -20°C

Summary

Product Description	Rabbit Polyclonal antibody recognizes Lipocalin 1
Tested Reactivity	Hu
Tested Application	IHC-P, WB
Host	Rabbit
Clonality	Polyclonal
Isotype	IgG
Target Name	Lipocalin 1
Species	Human
Immunogen	Synthetic peptide around the internal region of Human Lipocalin-1
Conjugation	Un-conjugated
Alternate Names	Tlc; VEGP; Tear lipocalin; TP; TLC; Lipocalin-1; PMFA; VEG protein; Von Ebner gland protein; Tear prealbumin

Application Instructions

Application table	Application	Dilution
	IHC-P	Assay-dependent
	WB	1:500 - 1:2000
Application Note	* The dilutions indicate recommended starting dilutions and the optimal dilutions or concentrations should be determined by the scientist.	

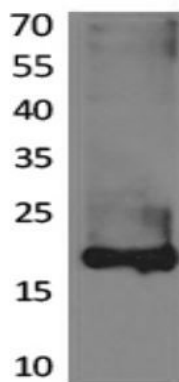
Properties

Form	Liquid
Purification	Affinity purification with immunogen.
Buffer	PBS, 0.02% Sodium azide, 50% Glycerol and 0.5% BSA.
Preservative	0.02% Sodium azide
Stabilizer	50% Glycerol and 0.5% BSA
Concentration	1 mg/ml
Storage instruction	For continuous use, store undiluted antibody at 2-8°C for up to a week. For long-term storage, aliquot and store at -20°C. Storage in frost free freezers is not recommended. Avoid repeated freeze/thaw cycles. Suggest spin the vial prior to opening. The antibody solution should be gently mixed before use.
Note	For laboratory research only, not for drug, diagnostic or other use.

Bioinformation

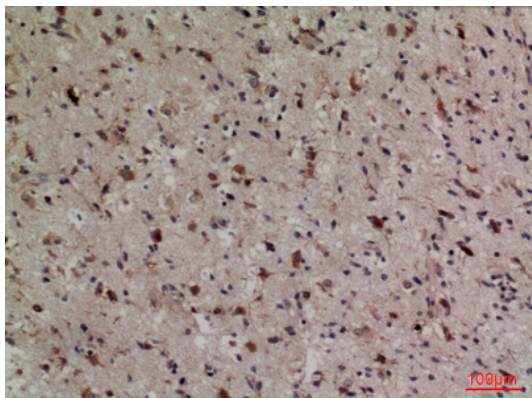
Database links	GeneID: 3933 Human Swiss-port # P31025 Human
Gene Symbol	LCN1
Gene Full Name	lipocalin 1
Background	This gene encodes a member of the lipocalin family of small secretory proteins. Lipocalins are extracellular transport proteins that bind to a variety of hydrophobic ligands. The encoded protein is the primary lipid binding protein in tears and is overproduced in response to multiple stimuli including infection and stress. The encoded protein may be a marker for chromosome aneuploidy as well as an autoantigen in Sjogren's syndrome. Alternatively spliced transcript variants encoding multiple isoforms have been observed for this gene, and two pseudogenes of this gene are also located on the long arm of chromosome 9. [provided by RefSeq, Nov 2011]
Function	Could play a role in taste reception. Could be necessary for the concentration and delivery of sapid molecules in the gustatory system. Can bind various ligands, with chemical structures ranging from lipids and retinoids to the macrocyclic antibiotic rifampicin and even to microbial siderophores. Exhibits an extremely wide ligand pocket. [UniProt]
Calculated Mw	19 kDa

Images



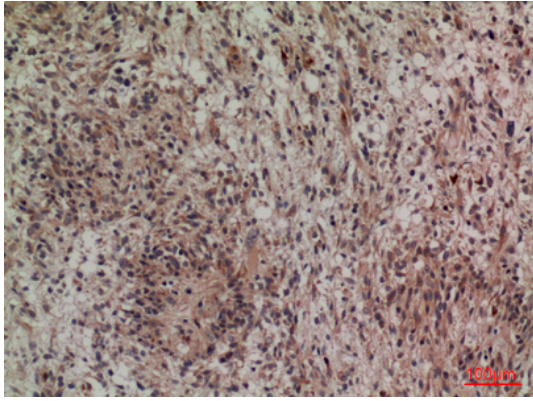
ARG65741 anti-Lipocalin 1 antibody WB image

Western blot: K562 cell lysate stained with ARG65741 anti-Lipocalin 1 antibody.



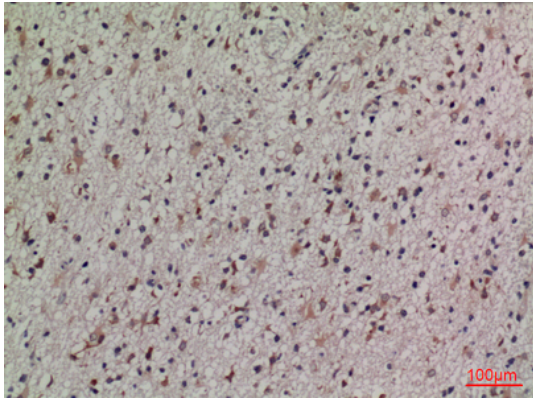
ARG65741 anti-Lipocalin 1 antibody IHC-P image

Immunohistochemistry: Paraffin-embedded Human brain stained with ARG65741 anti-Lipocalin 1 antibody.



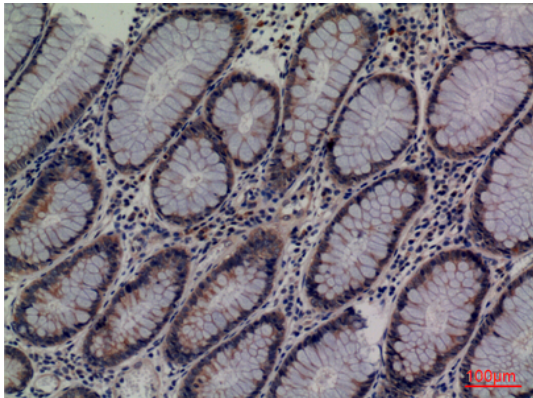
ARG65741 anti-Lipocalin 1 antibody IHC-P image

Immunohistochemistry: Paraffin-embedded Human brain stained with ARG65741 anti-Lipocalin 1 antibody.



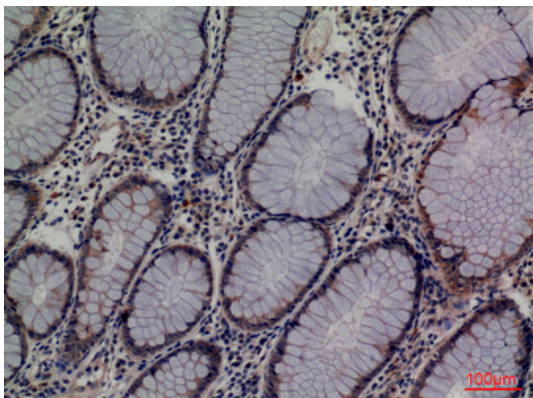
ARG65741 anti-Lipocalin 1 antibody IHC-P image

Immunohistochemistry: Paraffin-embedded Human brain stained with ARG65741 anti-Lipocalin 1 antibody.



ARG65741 anti-Lipocalin 1 antibody IHC-P image

Immunohistochemistry: Paraffin-embedded Human colon cancer stained with ARG65741 anti-Lipocalin 1 antibody.



ARG65741 anti-Lipocalin 1 antibody IHC-P image

Immunohistochemistry: Paraffin-embedded Human colon cancer stained with ARG65741 anti-Lipocalin 1 antibody.
