

ARG65671 anti-CK1 epsilon antibody

Package: 100 µl
Store at: -20°C

Summary

| | |
|---------------------|--|
| Product Description | Rabbit Polyclonal antibody recognizes CK1 epsilon |
| Tested Reactivity | Hu |
| Tested Application | IHC-P, WB |
| Host | Rabbit |
| Clonality | Polyclonal |
| Isotype | IgG |
| Target Name | CK1 epsilon |
| Species | Human |
| Immunogen | Fusion protein around the C-terminus of Human CK1 epsilon. |
| Conjugation | Un-conjugated |
| Alternate Names | tau; CK1epsilon; Casein kinase I isoform epsilon; A1426939; CK1e; CKI-epsilon; AW457082; A1551861; EC 2.7.11.1; KC1epsilon |

Application Instructions

| | | |
|-------------------|--|-----------------|
| Application table | Application | Dilution |
| | IHC-P | Assay-dependent |
| | WB | 1:500 - 1:2000 |
| Application Note | * The dilutions indicate recommended starting dilutions and the optimal dilutions or concentrations should be determined by the scientist. | |
| Positive Control | IHC: Human cervical cancer. WB: HeLa and A431 cell. | |

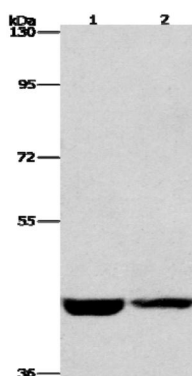
Properties

| | |
|---------------------|---|
| Form | Liquid |
| Purification | Affinity purification with immunogen. |
| Buffer | PBS (pH 7.3), 0.05% Sodium azide and 50% Glycerol |
| Preservative | 0.05% Sodium azide |
| Stabilizer | 50% Glycerol |
| Concentration | 3.1 mg/ml |
| Storage instruction | For continuous use, store undiluted antibody at 2-8°C for up to a week. For long-term storage, aliquot and store at -20°C. Storage in frost free freezers is not recommended. Avoid repeated freeze/thaw cycles. Suggest spin the vial prior to opening. The antibody solution should be gently mixed before use. |

Bioinformation

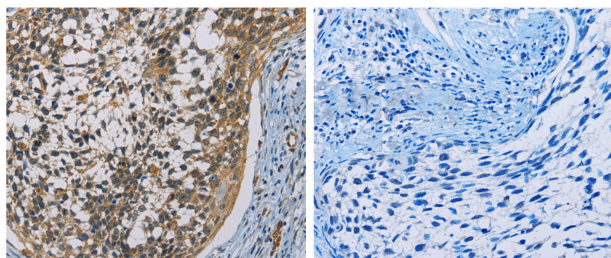
| | |
|----------------|---|
| Database links | GeneID: 1454 Human Swiss-port # P49674 Human |
| Gene Symbol | CSNK1E |
| Gene Full Name | casein kinase 1, epsilon |
| Background | This locus represents naturally occurring readthrough transcription between the neighboring LOC400927 (transmembrane phosphoinositide 3-phosphatase and tensin homolog 2 pseudogene) and CSNK1E (casein kinase I isoform epsilon) genes on chromosome 22. The readthrough transcript encodes the same protein as the downstream gene product (casein kinase I isoform epsilon). [provided by RefSeq, Feb 2014] |
| Function | Casein kinases are operationally defined by their preferential utilization of acidic proteins such as caseins as substrates. Can phosphorylate a large number of proteins. Participates in Wnt signaling. Phosphorylates DVL1. Central component of the circadian clock. In balance with PP1, determines the circadian period length, through the regulation of the speed and rhythmicity of PER1 and PER2 phosphorylation. Controls PER1 and PER2 nuclear transport and degradation. Inhibits cytokine-induced granulocytic differentiation. [UniProt] |
| Research Area | Signaling Transduction antibody |
| Calculated Mw | 47 kDa |

Images



ARG65671 anti-CK1 epsilon antibody WB image

Western blot: 40 µg of 1) HeLa and 2) A431 cell lysates stained with ARG65671 anti-CK1 epsilon antibody at 1:1550 dilution.



ARG65671 anti-CK1 epsilon antibody IHC-P image

Immunohistochemistry: paraffin-embedded Human cervical cancer tissue stained with ARG65671 anti-CK1 epsilon antibody (left) at 1:60 dilution, or the same antibody pre-incubated with antigen (right). (Original magnification: X200)