

## ARG65667 anti-HbA1c antibody [SQab1508]

Package: 100 µg  
Store at: -20°C

### Summary

Product Description	Mouse Monoclonal antibody [SQab1508] recognizes HbA1c
Tested Reactivity	Hu
Tested Application	ELISA, IP
Specificity	This antibody could recognize HbA1c in serum/plasma. Do not recognize HbA0 protein.
Host	Mouse
Clonality	Monoclonal
Clone	SQab1508
Target Name	HbA1c
Species	Human
Immunogen	KLH-conjugated synthetic Human HbA1c peptide.
Conjugation	Un-conjugated
Alternate Names	HBA-T3; Alpha-globin; HBH; Hemoglobin subunit alpha; Hemoglobin alpha chain

### Application Instructions

Application table	Application	Dilution
	ELISA	1:5000-1:10000
	IP	2µg / per 500-750µg protein
Application Note	* The dilutions indicate recommended starting dilutions and the optimal dilutions or concentrations should be determined by the scientist.	

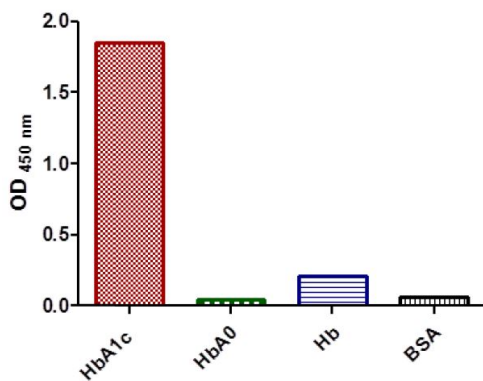
### Properties

Form	Liquid
Purification	Affinity purification with immunogen.
Buffer	PBS (pH 7.4) and 0.01% Thimerosal.
Preservative	0.01% Thimerosal
Concentration	1 mg/ml
Storage instruction	For continuous use, store undiluted antibody at 2-8°C for up to a week. For long-term storage, aliquot and store at -20°C or below. Storage in frost free freezers is not recommended. Avoid repeated freeze/thaw cycles. Suggest spin the vial prior to opening. The antibody solution should be gently mixed before use.
Note	For laboratory research only, not for drug, diagnostic or other use.

Bioinformation

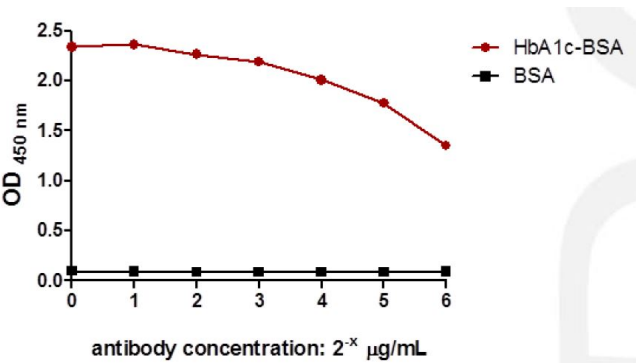
Database links	<a href="#">GeneID: 3039 Human</a> <a href="#">Swiss-port # P69905 Human</a>
Gene Symbol	HBA1
Gene Full Name	hemoglobin, alpha 1
Background	The measurement of HbA1c levels is used to identify the average plasma glucose concentration. In Diabetes mellitus, higher levels of HbA1c have been associated with cardiovascular disease and other diseases. Levels of more than 6.5% HbA1c (48 mmol/mol) are used as a criterion to diagnose diabetes.
Function	Involved in oxygen transport from the lung to the various peripheral tissues. [UniProt]
Research Area	Cell Biology and Cellular Response antibody
Calculated Mw	15 kDa
PTM	The initiator Met is not cleaved in variant Thionville and is acetylated.

Images



ARG65667 anti-HbA1c antibody [SQab1508] ELISA image

Direct ELISA: Direct ELISA data shows that ARG65667 anti-HbA1c antibody [SQab1508] reacts with HbA1c but not HbA0, Hb and BSA.



ARG65667 anti-HbA1c antibody [SQab1508] ELISA image

Direct ELISA: HbA1c-BSA or BSA coated plates stained with ARG65667 anti-HbA1c antibody [SQab1508] at various dilutions. Data shows that ARG65667 anti-HbA1c antibody [SQab1508] reacts with HbA1c-BSA but not BSA.