

ARG65630 Mouse IgG2a Isotype Control antibody [MOPC-173] (APC)

Package: 100 µg
Store at: 4°C

Summary

Product Description	APC-conjugated Mouse Monoclonal antibody [MOPC-173] as a negative control antibody for Mouse IgG2a
Species Does Not React With	Hu, Ms, Rat
Tested Application	FACS
Specificity	This mouse IgG2a monoclonal antibody (clone MOPC-173) reacts with an unknown epitope. It does not react with a variety of resting, activated, live, and fixed mouse, rat and human tissues.
Host	Mouse
Clonality	Monoclonal
Clone	MOPC-173
Isotype	IgG2a
Target Name	Mouse IgG2a
Immunogen	The transplantable plasmacytoma MOPC-173 was induced by intraperitoneal injection of mineral oils into BALB/c mice.
Conjugation	APC

Application Instructions

Application table	Application	Dilution
	FACS	8 - 10 µg/ml
Application Note	* The dilutions indicate recommended starting dilutions and the optimal dilutions or concentrations should be determined by the scientist.	

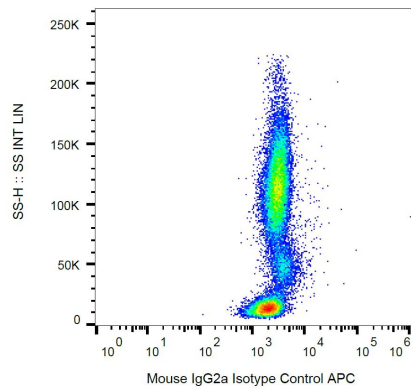
Properties

Form	Liquid
Buffer	PBS, 15 mM Sodium azide and 0.2% (w/v) high-grade protease free BSA
Preservative	15 mM Sodium azide
Stabilizer	0.2% BSA
Concentration	0.1 mg/ml
Storage instruction	Aliquot and store in the dark at 2-8°C. Keep protected from prolonged exposure to light. Avoid repeated freeze/thaw cycles. Suggest spin the vial prior to opening. The antibody solution should be gently mixed before use.
Note	For laboratory research only, not for drug, diagnostic or other use.

Bioinformation

Background	The specificity of staining by monoclonal antibodies to target antigens should be verified by establishing the amount of non-specific antibody binding. Especially at higher concentration (more than 15 µg/ml) the antibody staining usually has considable background. To this end a non-reactive immunoglobulin of the same isotype is included as a negative control for each specific monoclonal antibody used in a particular immunoassay.
Research Area	Controls and Markers antibody

Images



ARG65630 Mouse IgG2a Isotype Control antibody [MOPC-173] (APC)
FACS image

Flow Cytometry: Human peripheral blood stained with ARG65630 Mouse IgG2a Isotype Control antibody [MOPC-173] (APC) at 9 µg/ml dilution.